

332

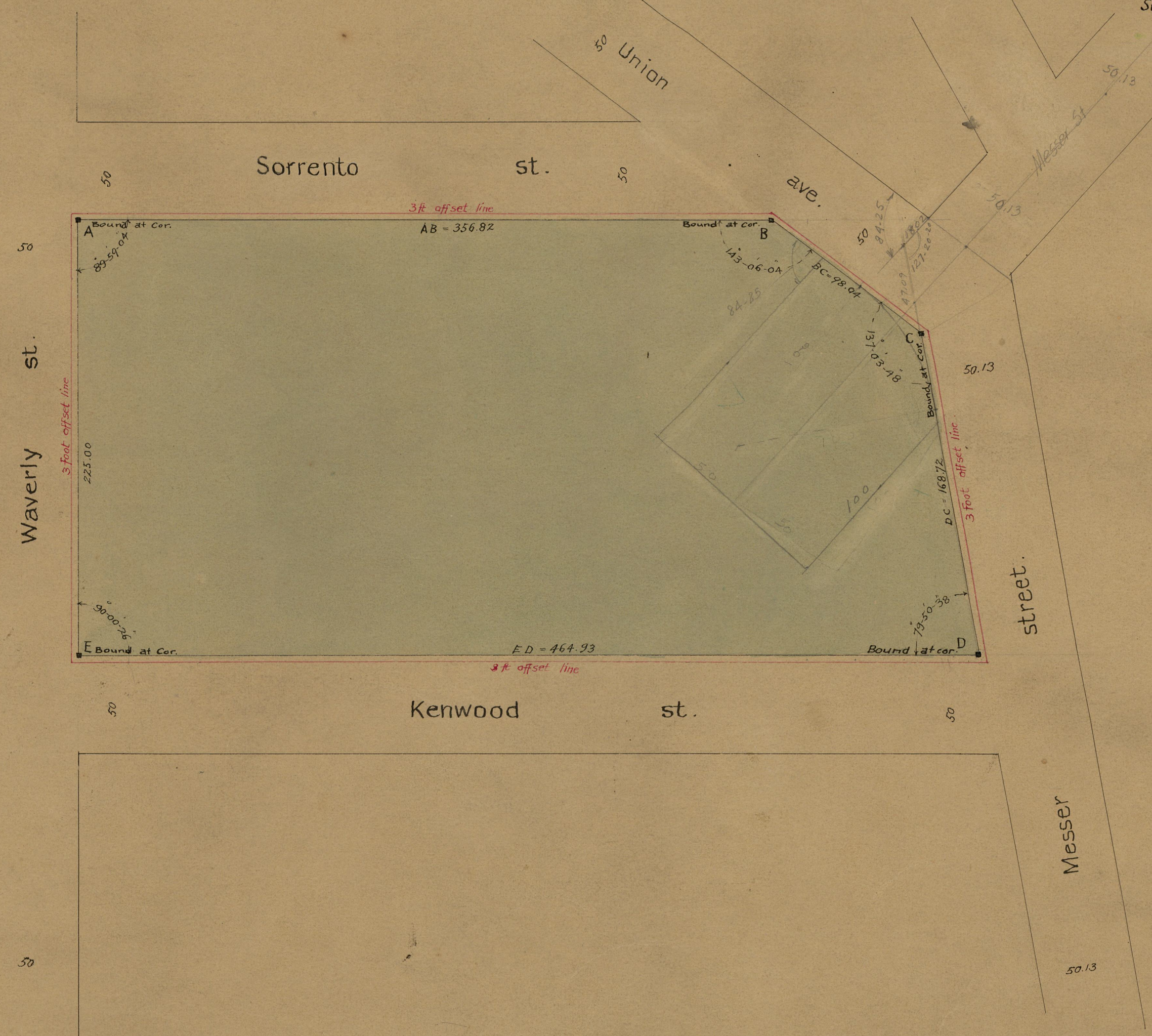
Aug. 22, 1908

035927

Map of Messer St. Play-Ground.

Scale, 50 ft. per inch.
Area ABCDE = 98070 sq. ft.

City of Providence bought of the Peoples Savings
Bank Oct. 19, 1908, for #19056.94 tract ABCDE
See deed book 500 page 205



OFFICE No.	18030
DRAWER	774
SHEET	21