

Plan of Jenkins St. School Est.

Scale, 40 ft. per inch.

Corrected to Oct. 6, 1910

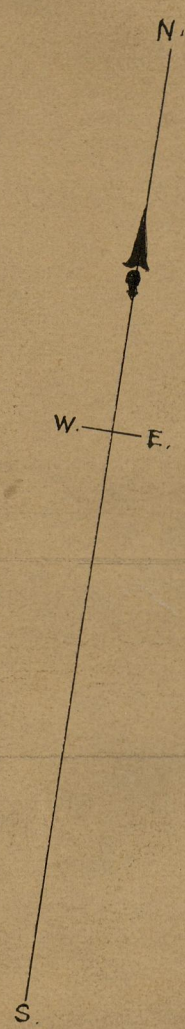
PROVIDENCE, R. I.
CITY ENGINEER'S OFFICE
CITY PROPERTY DEPT.

June 24, 1908

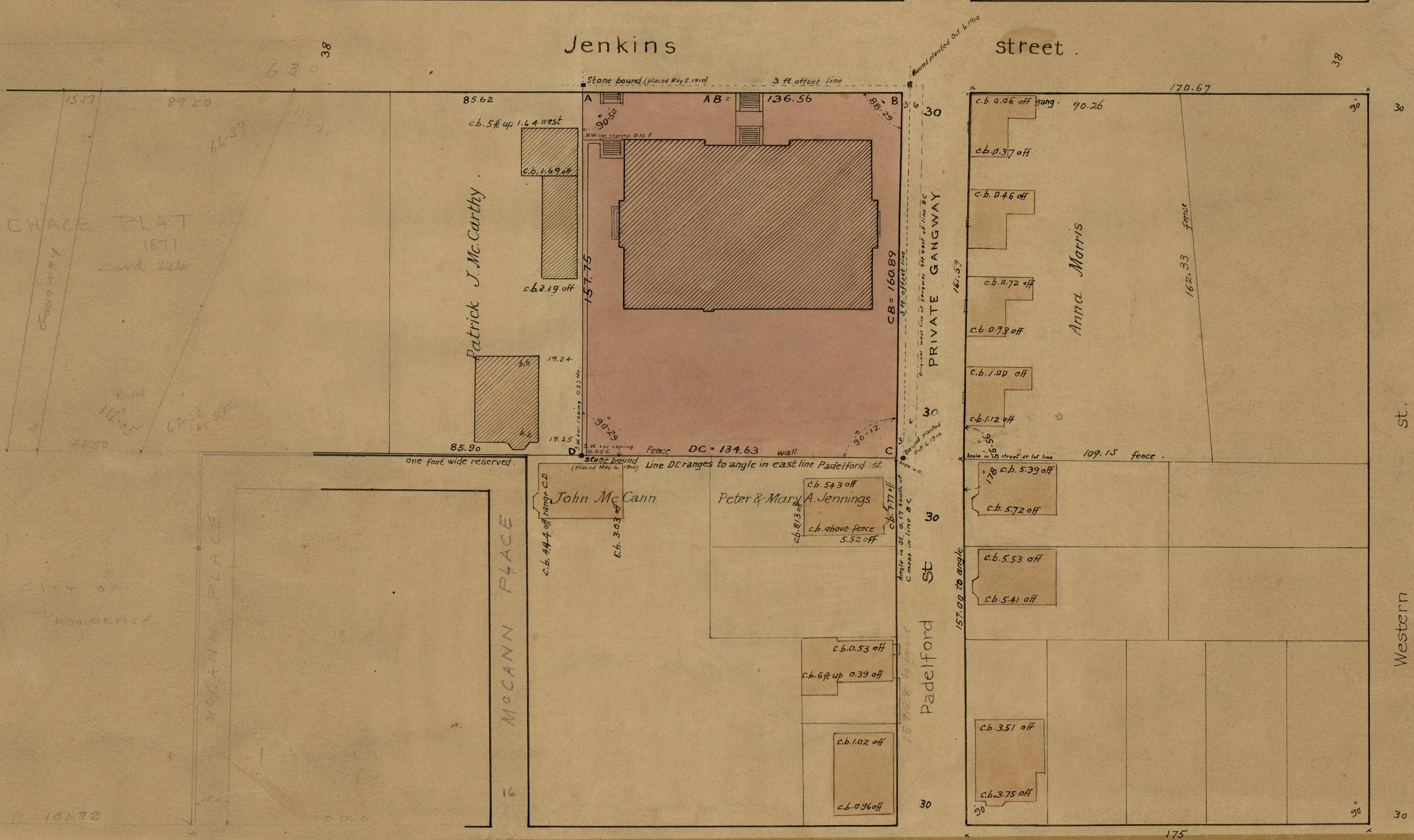
035826

201

City of Providence bought of Anna Morris July 16, 1908 see deed book 500-45
sold to P.J. McCarthy strip 18" wide on westerly side
see deed book
threw out 9 feet from easterly side to increase width of gang-
way to 30 ft. reducing the original purchase to the present lot
ABCD which contains 21600 sq. ft.



CALEB CHACE PLAT
1871
Card 226



Pleasant

St.

drill hole in curb 3ft W
of range E, line P. St.

OFFICE No. 17762
DRAWER 774
SHEET 16