

50

Chad Brown St.

Bound 0.18 off O. Av.

Bound 0.09 off O. Av.

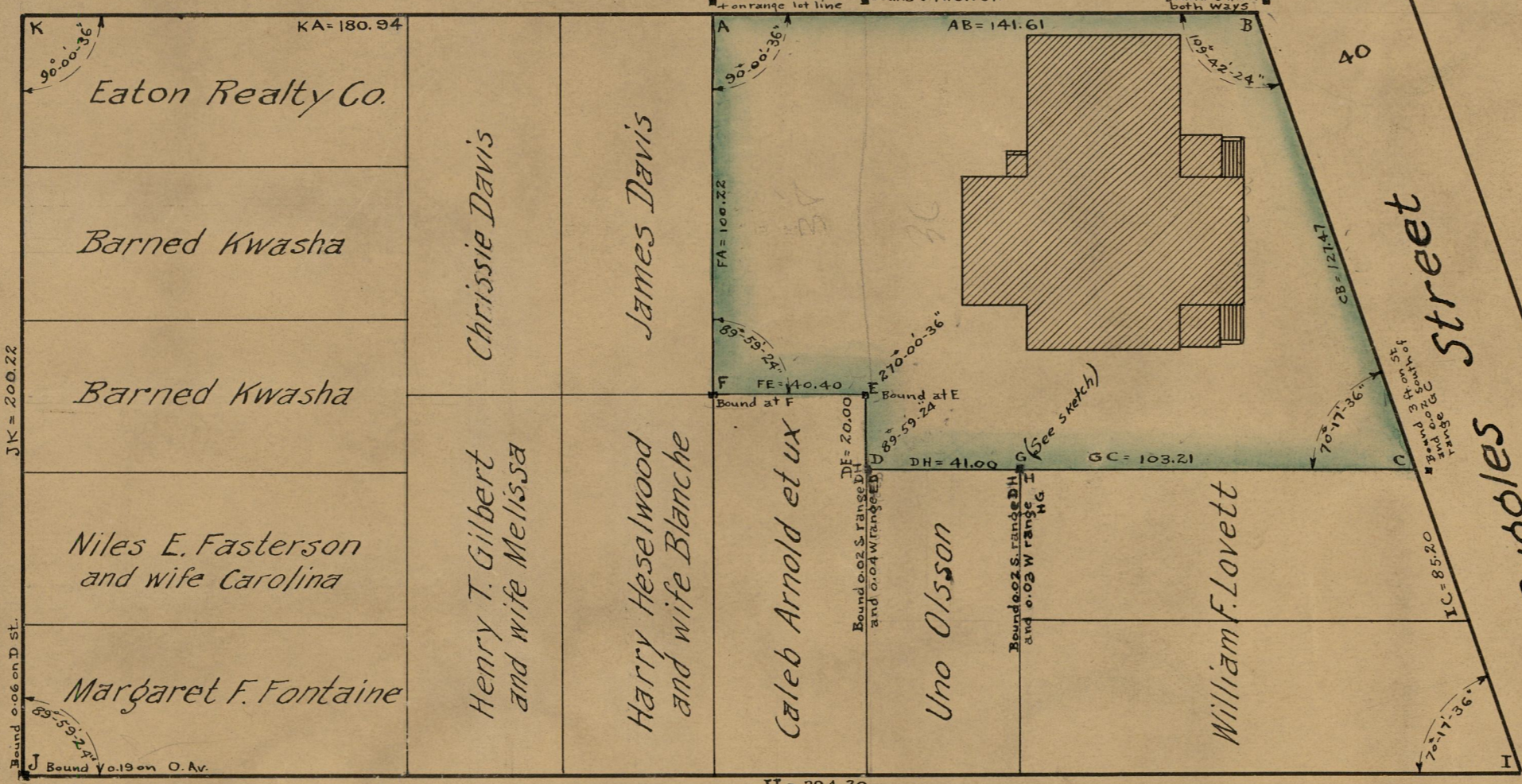
Area shaded Green = 18,783 sq. ft.
 Bounds placed at F, E and on range lot line at A, Sept. 13, 1916

Oakland Avenue

40

Sparrow Street

40



JK = 200.22

Bound 0.06 on D St.

Bound 0.19 on O. Av.

40

Dickens Street

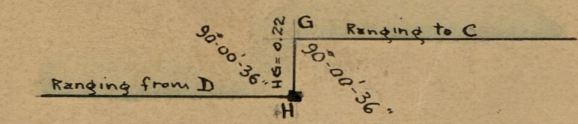
40

50

Bound 0.05 off O. Av.

40

Ruggles Street



OFFICE No. 2369
 DRAWER " 774
 SHEET " 14

CITY OF PROVIDENCE
 ENGINEERING DEPARTMENT
 Showing Ruggles St. School Est.
 Drawn by Blanding Checked by Brown
 Scale 40 ft. per in. Date Oct. 27, 1916
 Corrected by Louis D. Richardson Asst. Eng.
 Approved by [Signature] City Eng.