

Valley Company conveyed to City of Providence April 22, 1907,
see deed book 488 pages 208/210 tract bounded by the letters
ASRj k NMLKJ f g h VUUEGba IHCFEDCBA (For Park and Parkway
purposes)

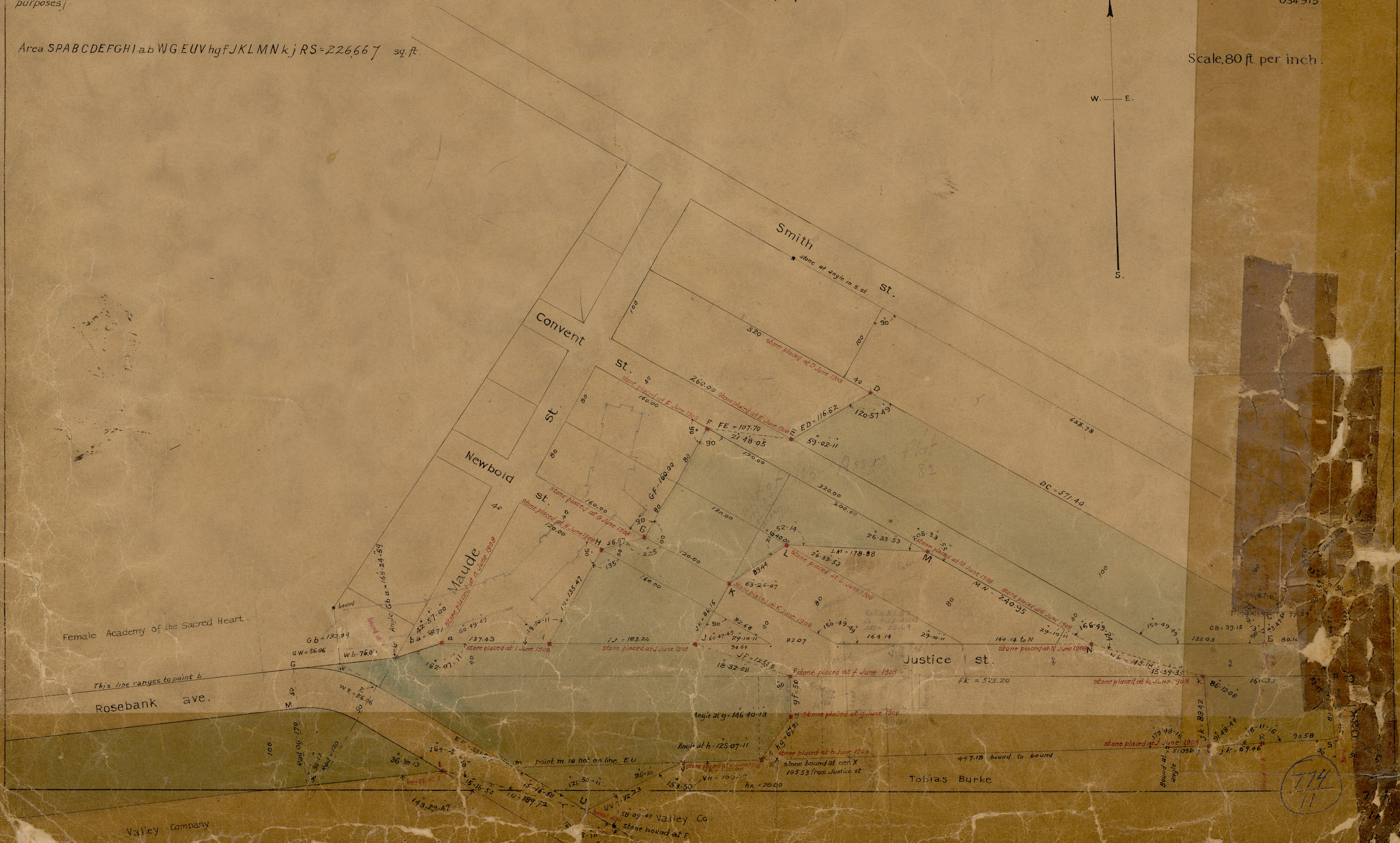
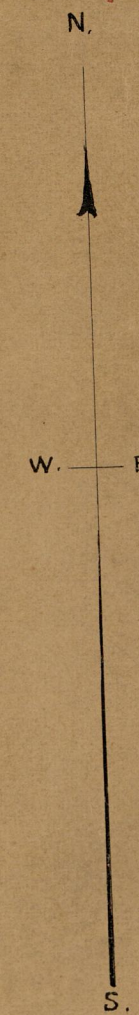
Area SPABCDEFGHI ab WG EUV hgf JKLMNkj RS = 226,667 sq. ft.

Map of Pleasant Valley Parkway.

Scale, 80 ft. per inch.

Feb. 28, 1907.
034915.

Scale, 80 ft. per inch.



Female Academy of the Sacred Heart

This line ranges to point b

Rosebank ave.

Tobias Burke

Valley Company

774
11