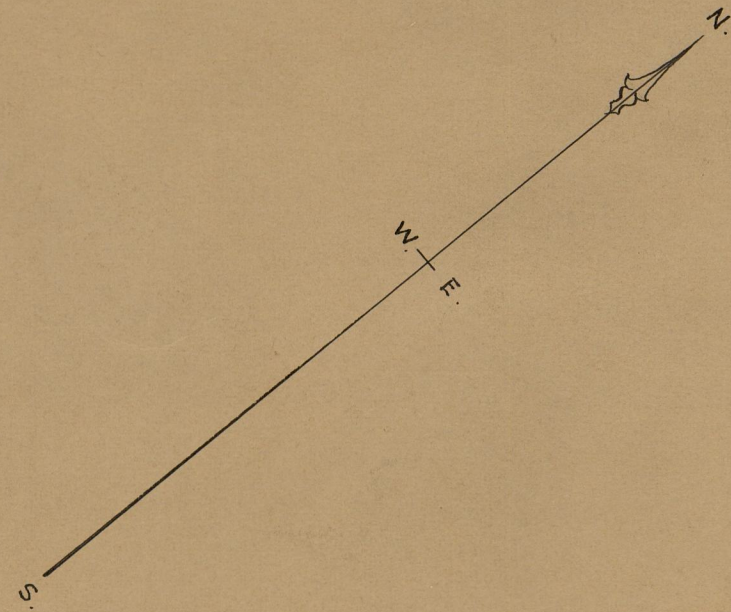


Map of
Plainfield St. Ward Room Lot.
Scale, 40 ft. per in.

Bounds were placed as hereon shown June 18, 1908.



PROVIDENCE, R. I.
CITY ENGINEER'S OFFICE,
CITY PROPERTY DEP'T.

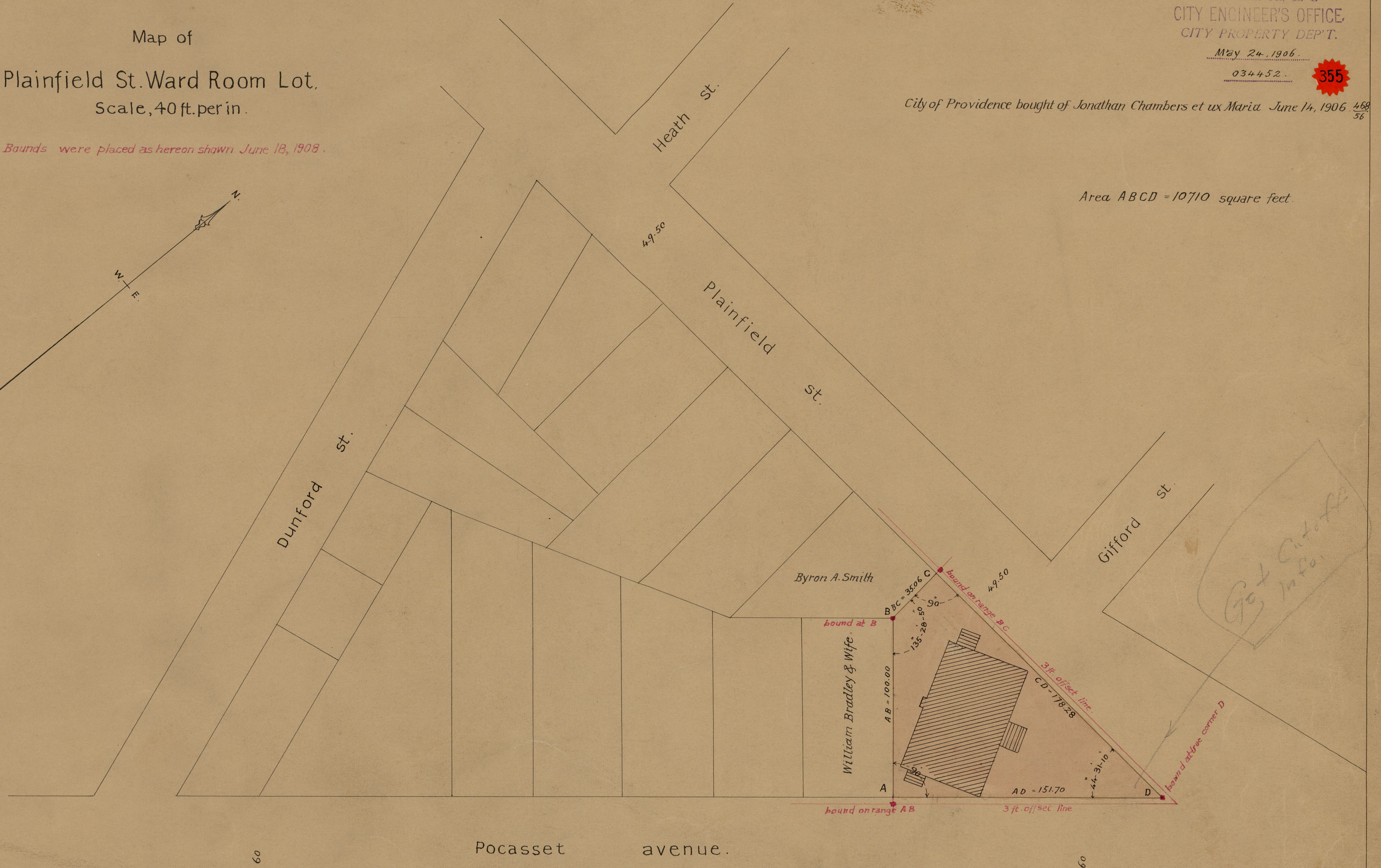
May 24, 1906.

034452.

355

City of Providence bought of Jonathan Chambers et ux Maria June 14, 1906 ⁴⁶⁸/₅₆

Area ABCD = 10710 square feet.



OFFICE No.	17297
DRAWER	773
SHEET	49