

Area 31932 Sqft. Oct 4/09

# Map of Regent ave. School Estate.

Scale, 40 ft. per inch.

Bounds were placed as hereon shown Nov. 11, 1904.

PROVIDENCE, R. I.  
CITY ENGINEER'S OFFICE,  
CITY PROPERTY DEPT.

May 6, 1904.

033103

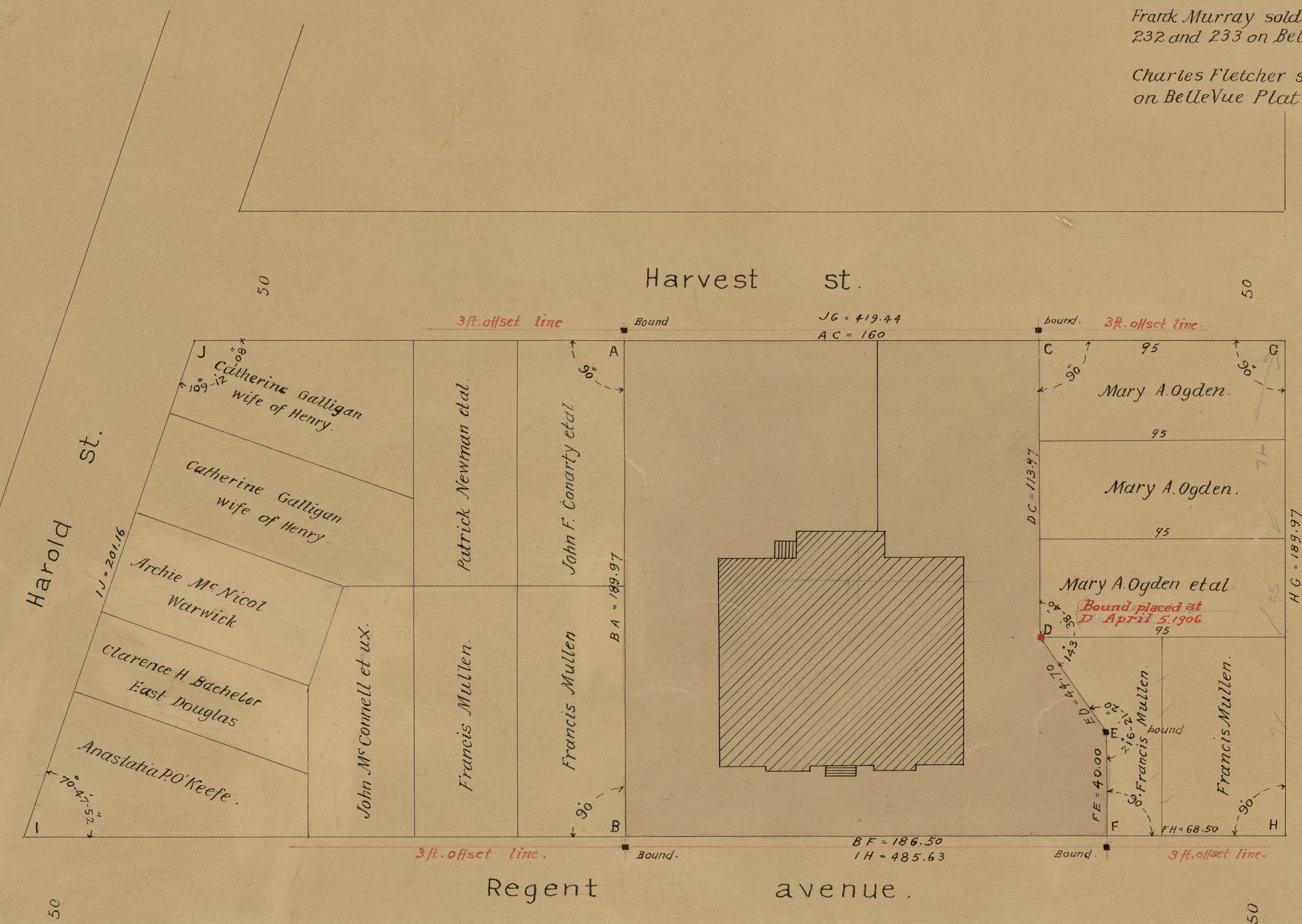
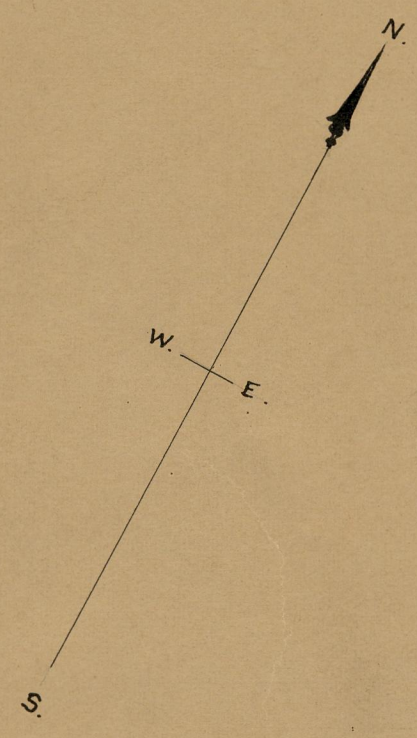
950

Francis Mullen sold to City of Prov. May 21, 1904 lots 244 & 245 and parts of lots 229 and 247 on Belle Vue Plat #4600 D.B. 461 p. 432

Thos. & Isabella T. Corrigan sold to City of Prov. May 18, 1904, lot 246 on Belle Vue Plat and part of 247 #1500 D.B. 461 p. 430.

Frank Murray sold to City of Prov. May 14, 1904, May 14, 1904, lots 232 and 233 on Belle Vue Plat #1010 D.B. 461 p. 434

Charles Fletcher sold to City of Prov. May 11, 1904, lots 230 & 231 on BelleVue Plat #600 D.B. 464 p. 240.



50

50

HG = 189.97

50

50

OFFICE No. 16874  
DRAWER 773  
SHEET 43