

Plat of Beacon Ave. School Est.

Scale 30 ft. per inch.

Bounds were placed as hereon shown Nov. 22, 1904.

PROVIDENCE, R. I.
CITY ENGINEER'S OFFICE.
CITY PROPERTY DEP'T.

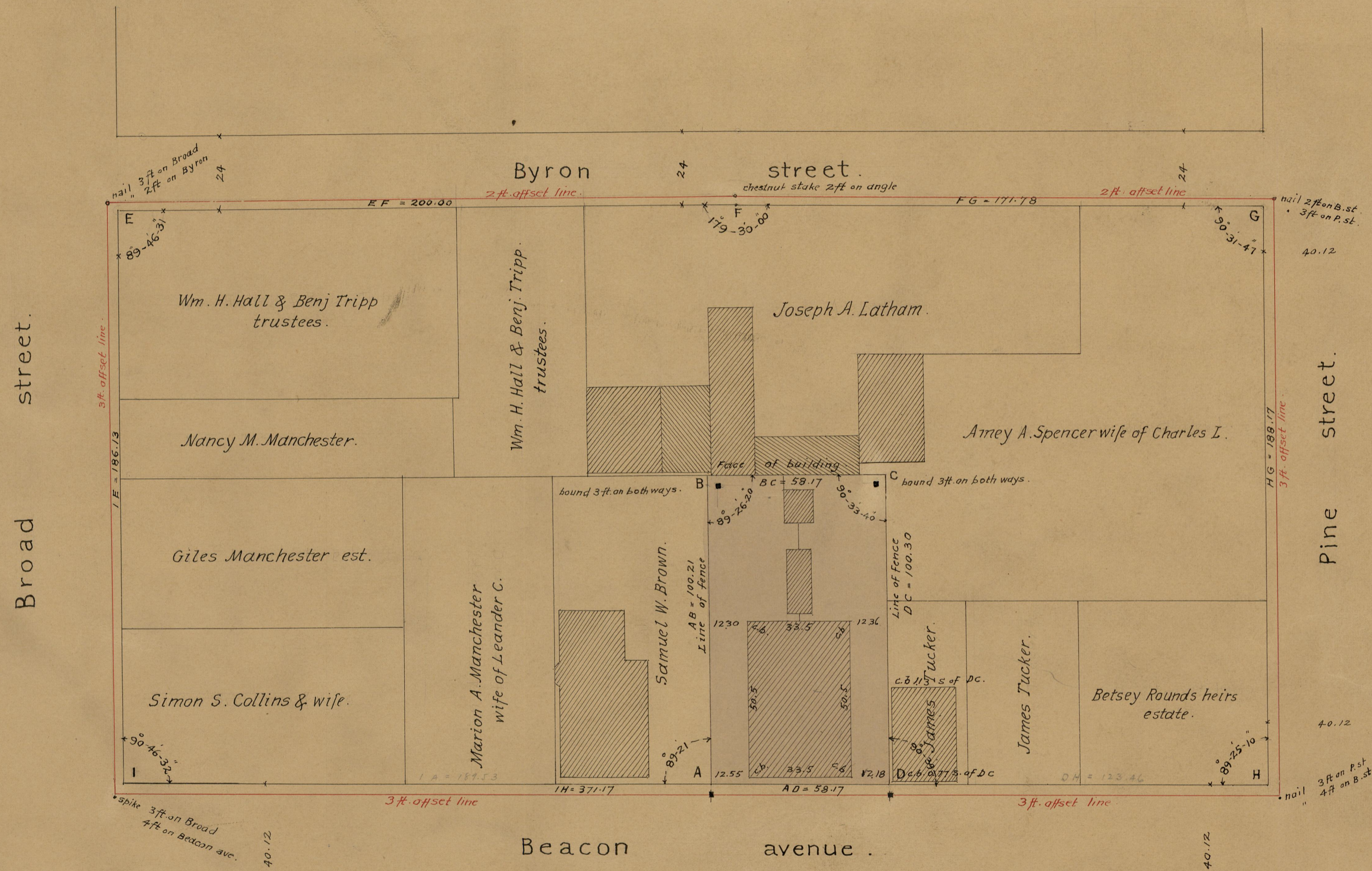
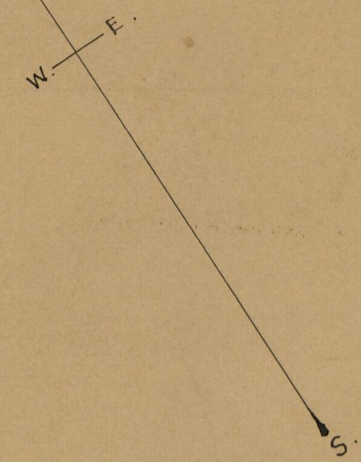
MAY 26, 1904

033136

502

George W. and Charles I. Wheeler sold to City of Providence
Nov. 15, 1843, lot 59 by 100 ft. See deed book 87 p. 207.

Area of ABCD = 5832 sq. feet.



OFFICE No. 16872
DRAWER 773
SHEET 42