

Map of
Central St. Station Lot.

Scale, 20 ft. per inch.

Area = ABCD = 3540 sq. ft.

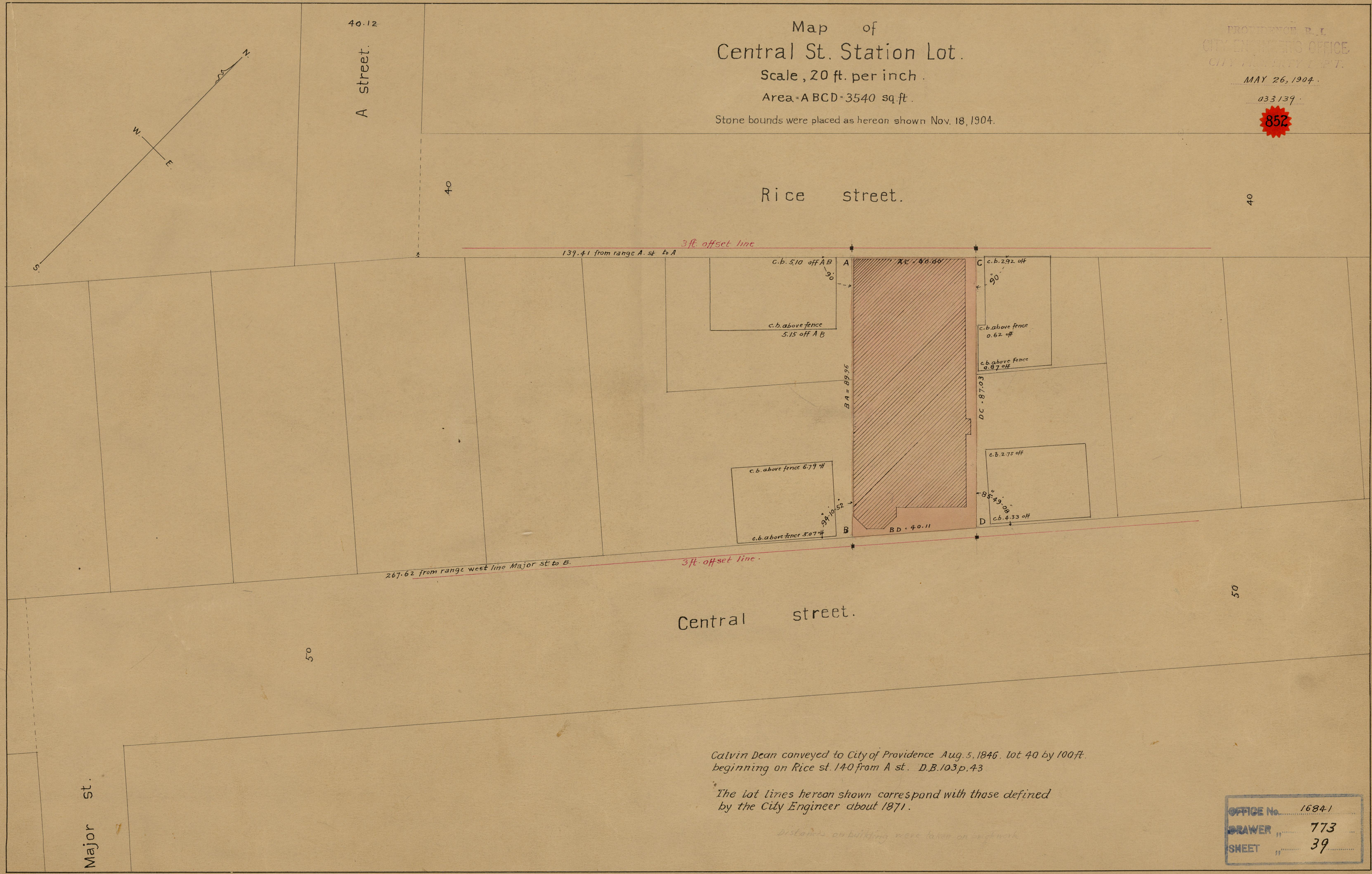
Stone bounds were placed as hereon shown Nov. 18, 1904.

PROVIDENCE, R. I.
CITY ENGINEER'S OFFICE
CITY PROPERTY DEPT.

MAY 26, 1904.

033139

852



139.41 from range A. st. to A

267.62 from range west line Major st. to B.

3 ft. offset line.

3 ft. offset line.

Calvin Dean conveyed to City of Providence Aug. 5, 1846. lot 40 by 100 ft. beginning on Rice st. 140 from A st. D.B. 103 p. 43

The lot lines hereon shown correspond with those defined by the City Engineer about 1871.

distances on bulking were taken on gridwork

OFFICE No.	16841
DRAWER	773
SHEET	39