

Map of
Benefit St. School Est.

Scale, 30 ft. per Inch.

CITY ENGINEER'S OFFICE,
CITY PROPERTY DEPT.

MAR. 5, 1902.

030829

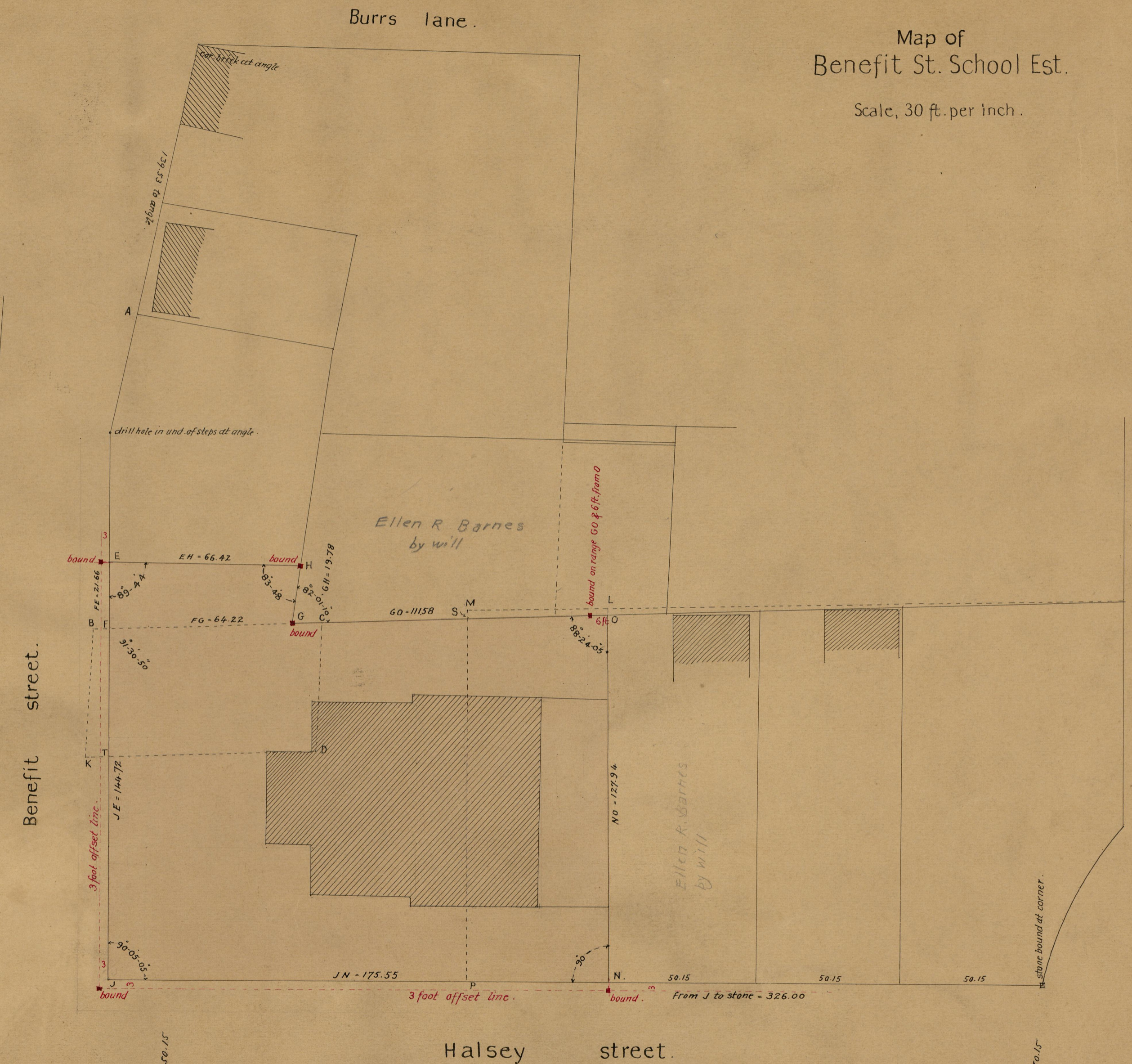
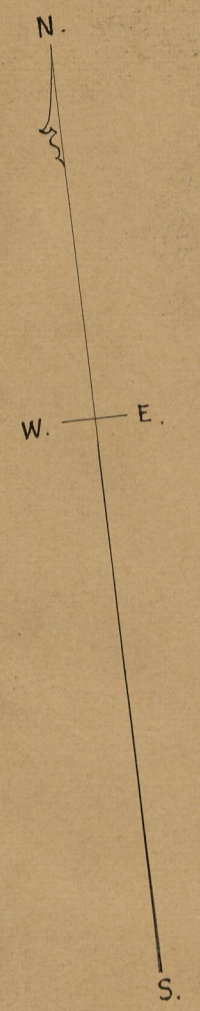
136

Lot BCDK bought of the Proprietors of the Whipple Hall School Aug 12, 1799, see D.B. 27, page 72. The portion BFTK of this lot was taken to widen Benefit st. Oct. 15, 1800 see Town Council records 7 page 561.
Lot EFGH bought of Ann P. Townsend April 30, 1825 see D.B. 48 page 346
Lot TDGSPJ bought of Thomas L. Halsey et al. Jan. 22, 1840 see D.B. 77 page 57
Lot MPNL bought of Anna E. Pratt Nov. 13, 1851 and of Sam^l W. Peckham, guardian, Nov. 29, 1851, see D.B. 123 pages 396 & 397.

This lot is No. 168 on Assessor's Plat 9.

Area JN0GHEJ = 23391 sq. feet.

Stone bounds were placed as hereon shown May 20, 1902.



st.

Pratt

OFFICE No. 14912
DRAWER 773
SHEET 27