

Feb. 24, 1902.

030609.

89

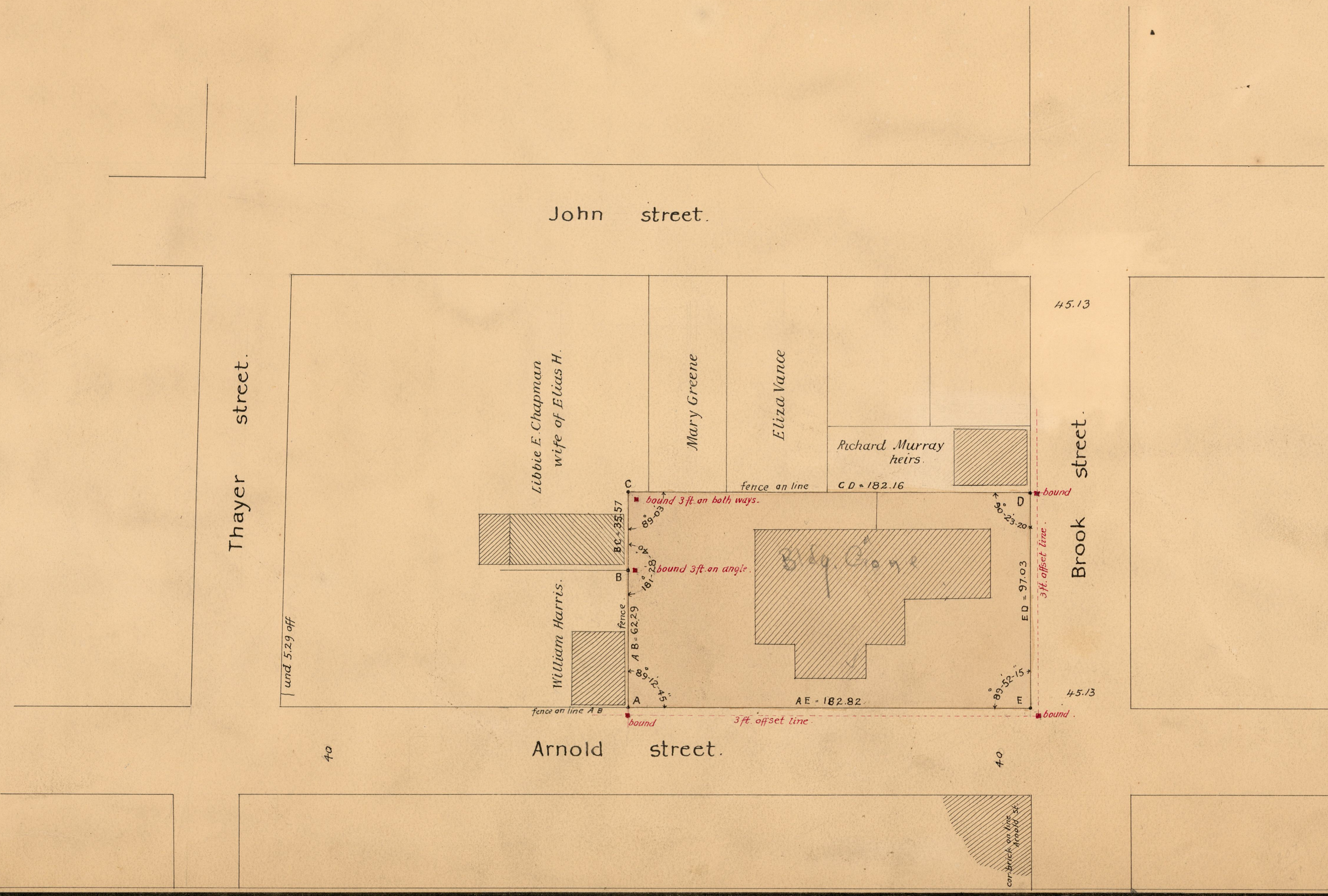
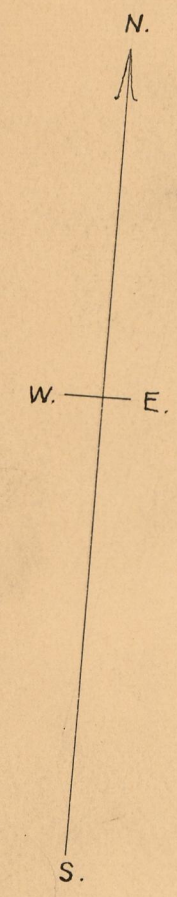
Map of
Arnold st. School Est.

Scale, 40 ft. per inch.

Samuel Dexter by assignee conveyed to City of Providence
May 24, 1839 see deed book 75 page 14-2

Area of ABCDEA = 17753 square feet.

Stone bounds were placed as hereon shown May 15, 1902.



OFFICE No. 14-582
DRAWER 773
SHEET 25