

Map of
Thayer Street
Grammar School Estate.

Scale, 40 ft. per inch.

PROVIDENCE, R. I.
CITY ENGINEER'S OFFICE
CITY PROPERTY DEPT.

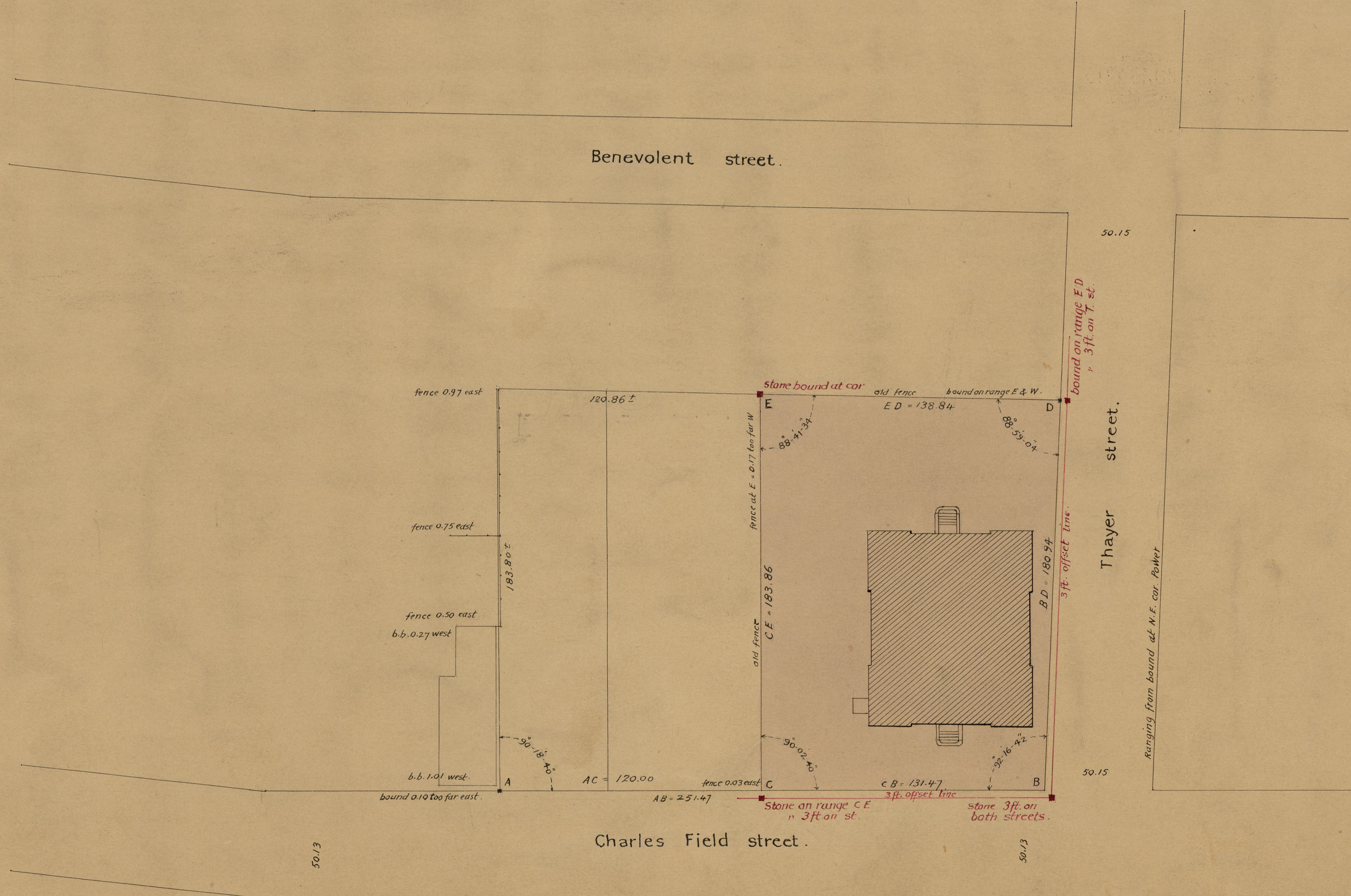
Oct. 1, 1901.

030373

(225)

Stone bounds were placed as hereon shown
Oct. 11, 1901.

City of Prov. bought of Allen O. Peck May 5, 1866 lots 4-5-6 & 7 on
J. B. Howell Heirs Plat. See deed book 175 p. 703
City of Prov. bought of John L. Calder July 10, 1869, 30 feet off
lot 3 on J. B. Howell Plat. See deed book 186 p. 393



OFFICE No. 14503
DRAWER " 773
SHEET " 23