

Map of
South Water St. Wharf Estate.

Scale 20 ft per inch.

Revised in April A.D. 1910.

For a copy of this map before revision see
City Property Sq. No. 7

PROVIDENCE R. I.
CITY ENGINEER'S OFFICE
CITY PROPERTY DEPT

Aug. 29, 1901

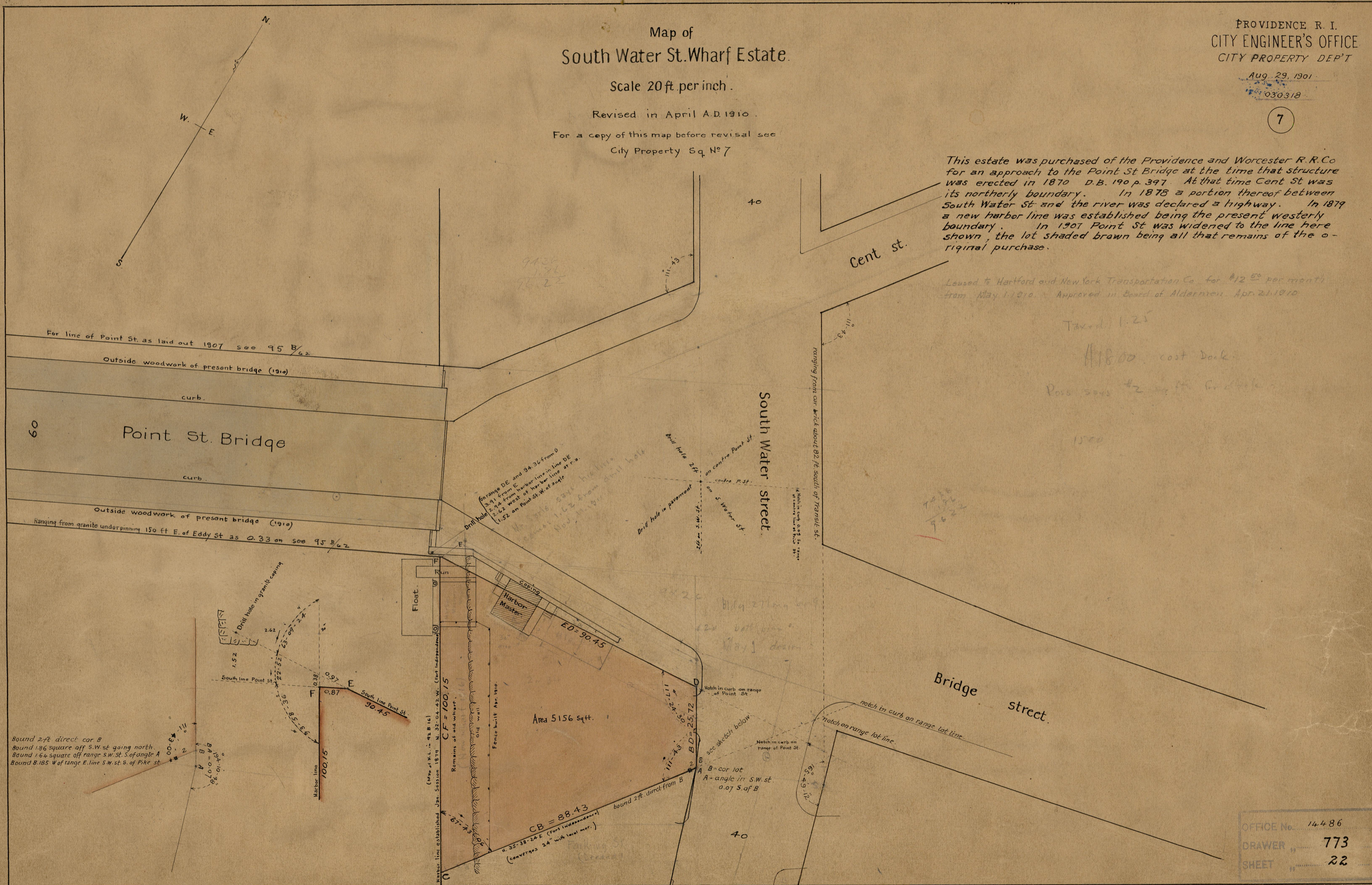
030318

7

This estate was purchased of the Providence and Worcester R.R. Co for an approach to the Point St Bridge at the time that structure was erected in 1870 D.B. 190 p. 397. At that time Cent St was its northerly boundary. In 1878 a portion thereof between South Water St and the river was declared a highway. In 1879 a new harbor line was established being the present westerly boundary. In 1907 Point St was widened to the line here shown, the lot shaded brown being all that remains of the original purchase.

Leased to Hartford and New York Transportation Co. for \$12.00 per month from May 1, 1910. Approved in Board of Aldermen, Apr. 26, 1910.

Tax = 1.25
\$18.00 cost dock
Poss. some 42 sq ft. for dock
1500



Bound 2 ft direct cor B
Bound 1.86 square off S.W. st going north
Bound 1.64 square off range S.W. st. S. of angle A
Bound 8.185 W of range E. line S.W. st. S. of Pike st

(Map of N.L. 42 B 16)
Harbor line established Jan. Session 1879 N. 32° 04' 42" W. (Curt. Independence)
C.F. = 100.15

CB = 88.43
A - 35° 38' 24" E (Fort Independence)
(convergency 24" with local mer.)

OFFICE No. 14486
DRAWER 773
SHEET 22