

Aug 6, 1901

030268

692

Charles Fletcher conveyed to City of Providence, July 5, 1901,
lot ABCDEFG HA. See deed book 440 page 61.

Edwin M. Harris to City of Providence, June 25, 1901 right to place
thirty-six inch brick sewer, for storm water only, from land of
Charles Fletcher to Woonasquatucket River. See D.B. 439 p.465.

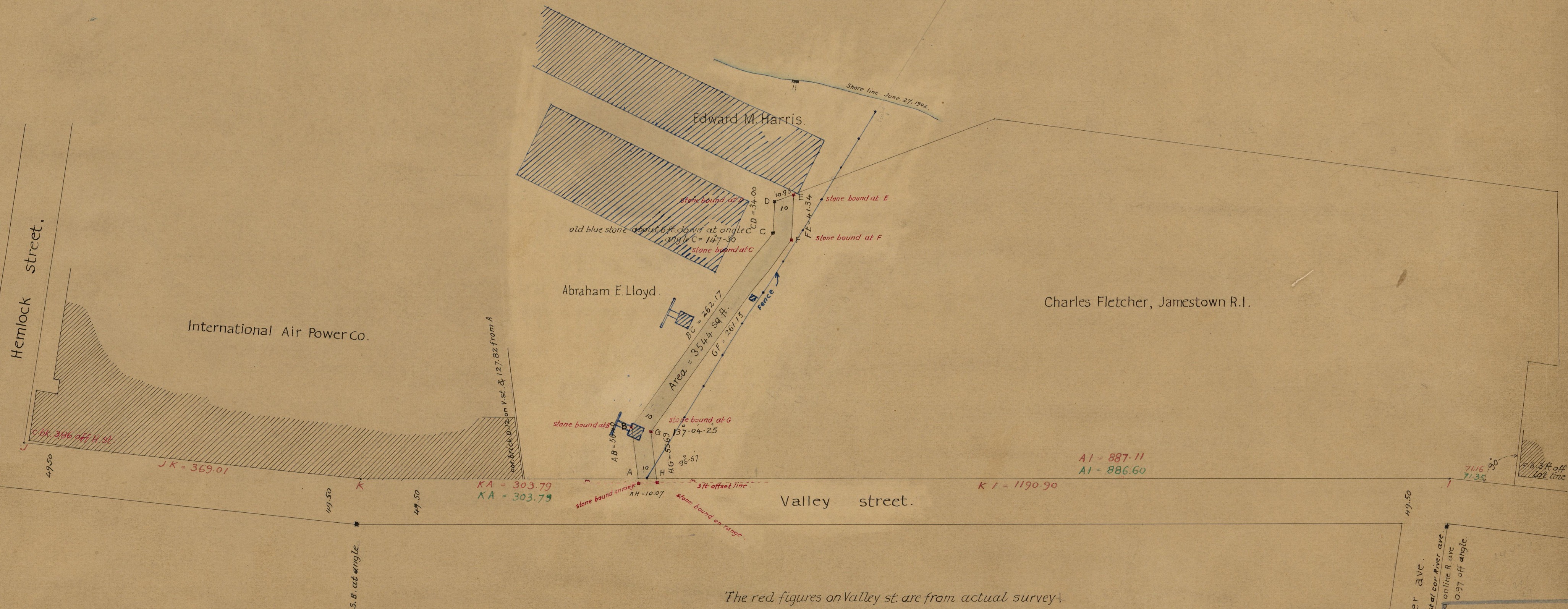
Stone bounds were placed as hereon shown June 27, 1902.

Data in Blue Ink added March 29, 1916.

Map
showing strip of land on
Valley Street
purchased for Sewer Purposes.

Scale, 80ft. per inch.

Taxed \$700 1916



The red figures on Valley st. are from actual survey.
The green figures are taken from deeds and maps.