

Map of
Douglas ave. Fire Station.

Scale, 30 ft. per inch.

PROVIDENCE, R. I.
CITY ENGINEER'S OFFICE
CITY PROPERTY DEPT.

July 25, 1900.

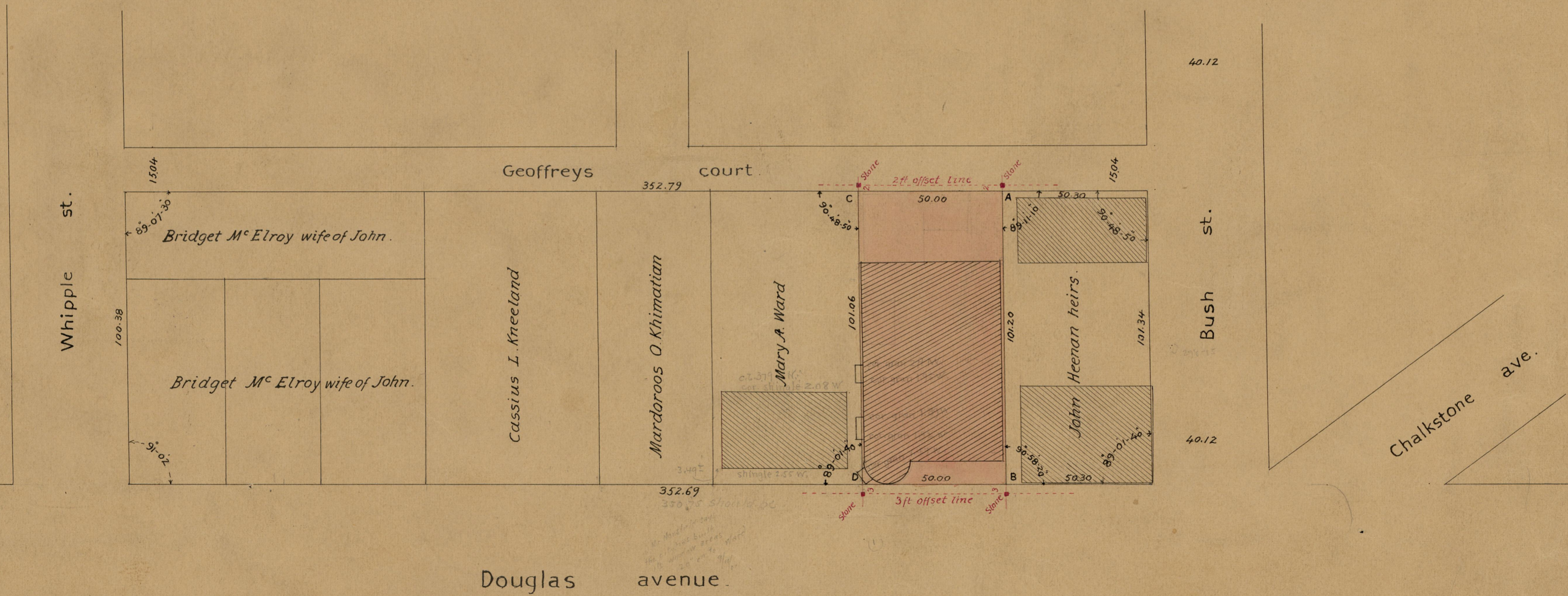
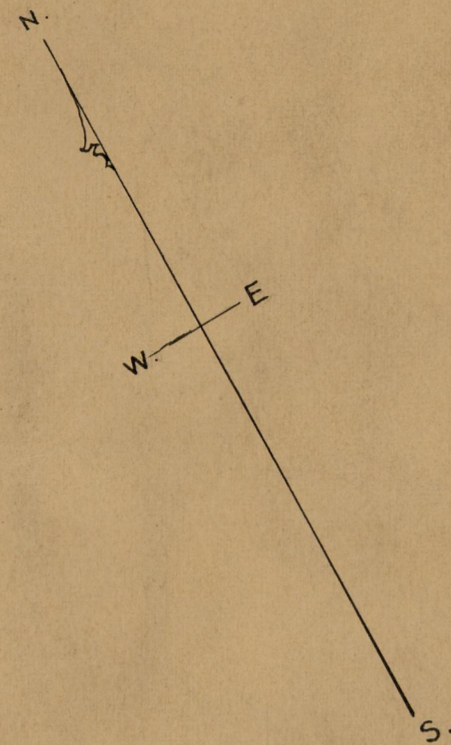
City of Providence bought of administrator of estate
of John Heenan Aug 1900 see deed book p.

029507.

875

Area of ABCD = 5056 sq. ft.

Stone bounds were placed as hereon shown Aug. 22, 1900.



OFFICE No. 14284
DRAWER 773
SHEET 20