

Map of
Grove st. School Estate.

Scale, 30 ft. per inch.

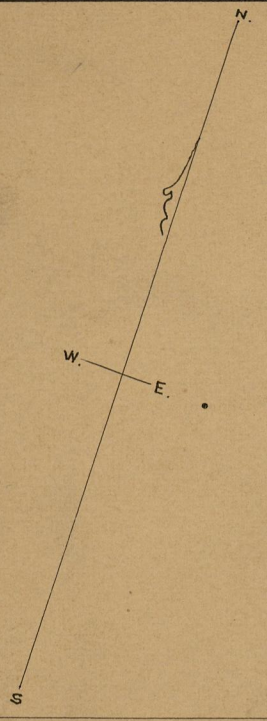
Bounds placed May 17+18, 1900.

PROVIDENCE, R. I.
CITY ENGINEER'S OFFICE.
CITY PROPERTY DEP'T.

Mar. 14, 1900.

029167.

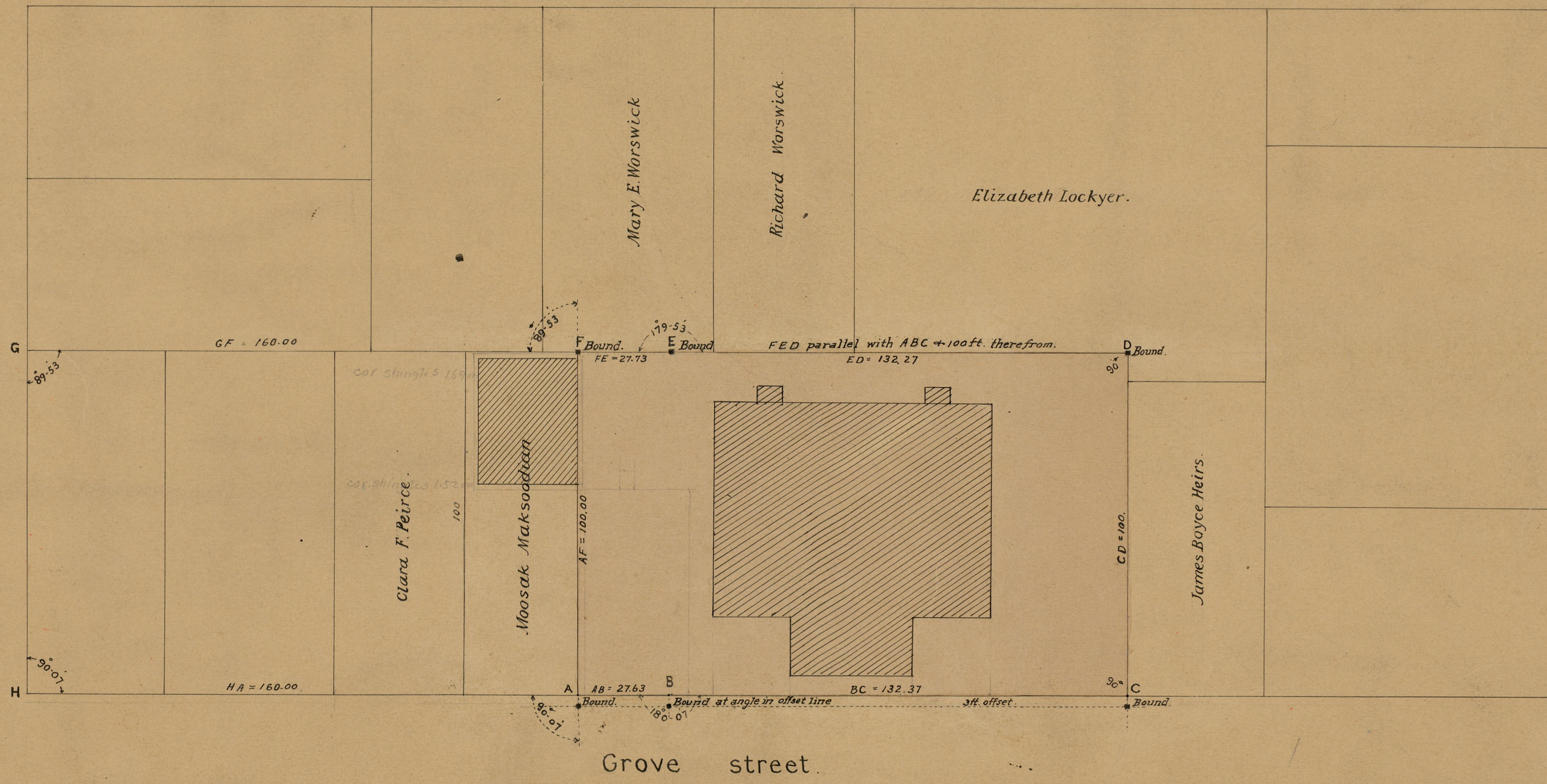
This estate comprises lots 283, 284, 285 + 286 on the Wm. Almy
Flat and was purchased by the city of Providence as follows:—
Elizabeth Lockyer by Gdn. Mar. 20, 1900 - 283 + 284 D.B. 431 - 150
George L. Warfield Mar. 20, 1900 - 285 + 286 D.B. 432 - 9



Almy street.

Ring street.

Courtland street.



OFFICE No 14186.
DRAWER " 773
SHEET 16