

Map of  
Berkshire st. School Estate.

Scale, 30 feet per inch.

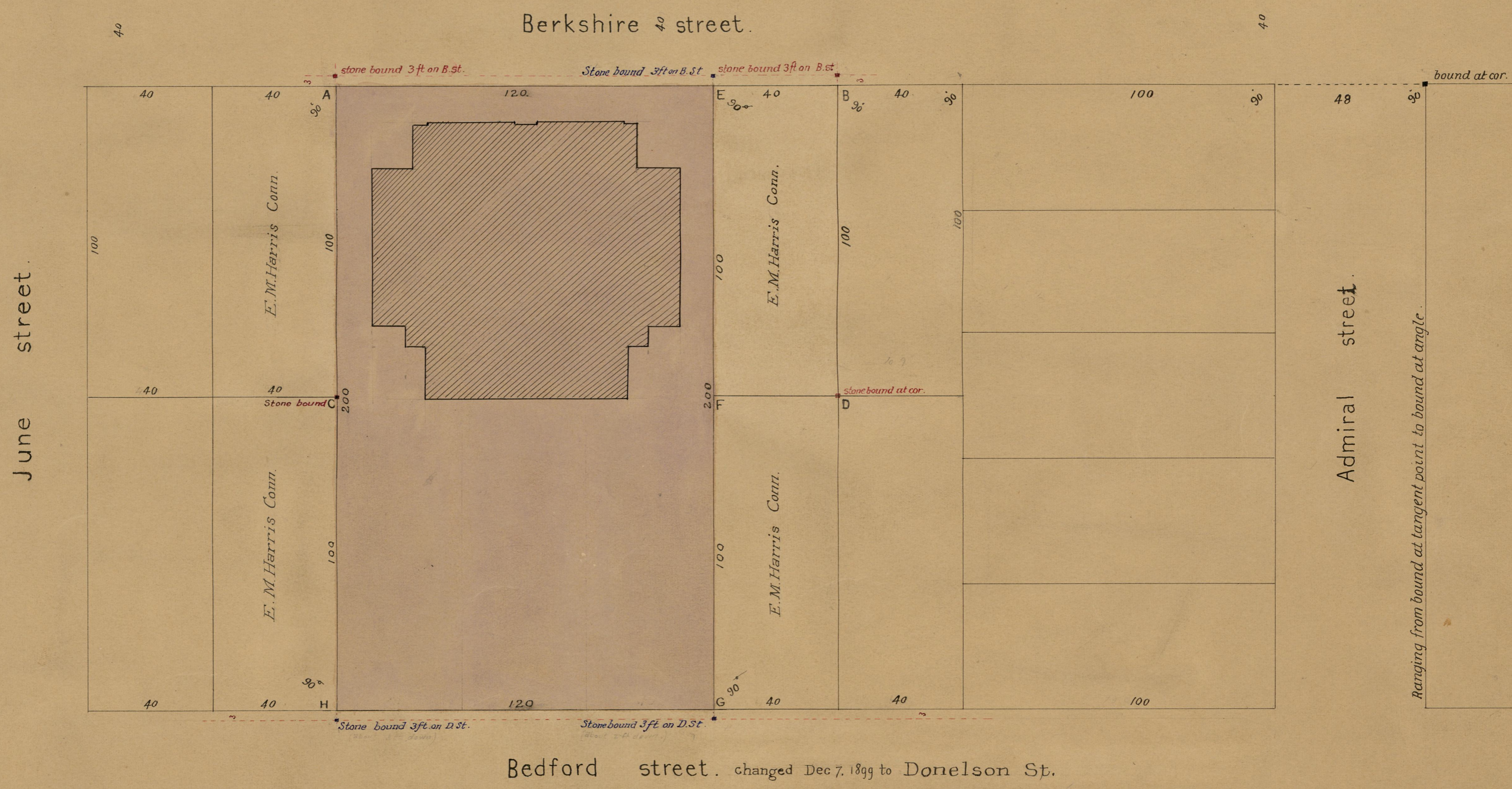
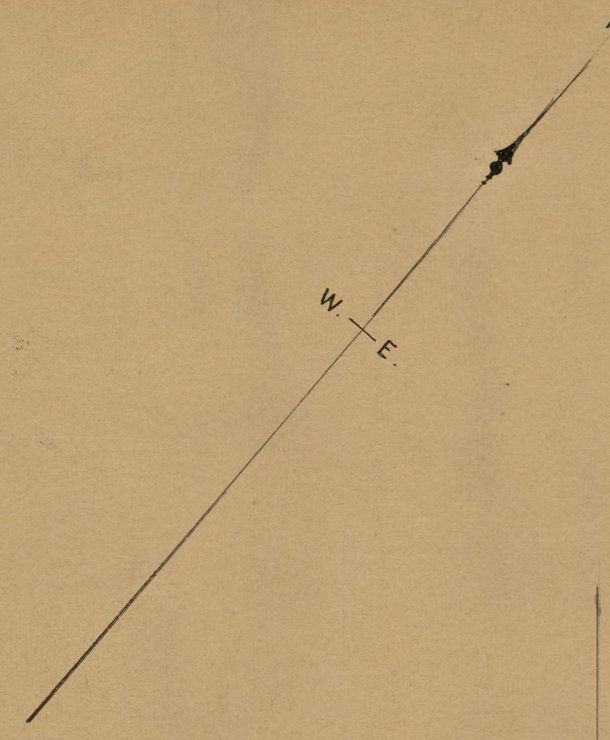
PROVIDENCE, R. I.  
CITY ENGINEER'S OFFICE,  
CITY PROPERTY DEPT.

Nov. 29, 1899.

028831.

On June 3, 1899 City of Providence bought of E. M. Harris for \$1500  
lots 105, 106, 107 and 108 on the Dr. E. M. Harris Plat, see D. B. 414 p. 497  
being the lot A B D C on this plat.

Stone bounds were placed around this lot Dec 1, 1899. and May 25, 1900.  
May 19, 1900 by an exchange with Dr. E. M. Harris the city received the  
lot C F G H on this plat comprising lots 117, 118 & 119 on Dr. E. M. Harris Plat  
and gave the lot E B D F. being No. 108 on Dr. Harris Plat, see D. B.  $\frac{429}{41}$



Ranging from bound at tangent point to bound at angle.

OFFICE No. 14033  
DRAWER " 773  
SHEET " 15