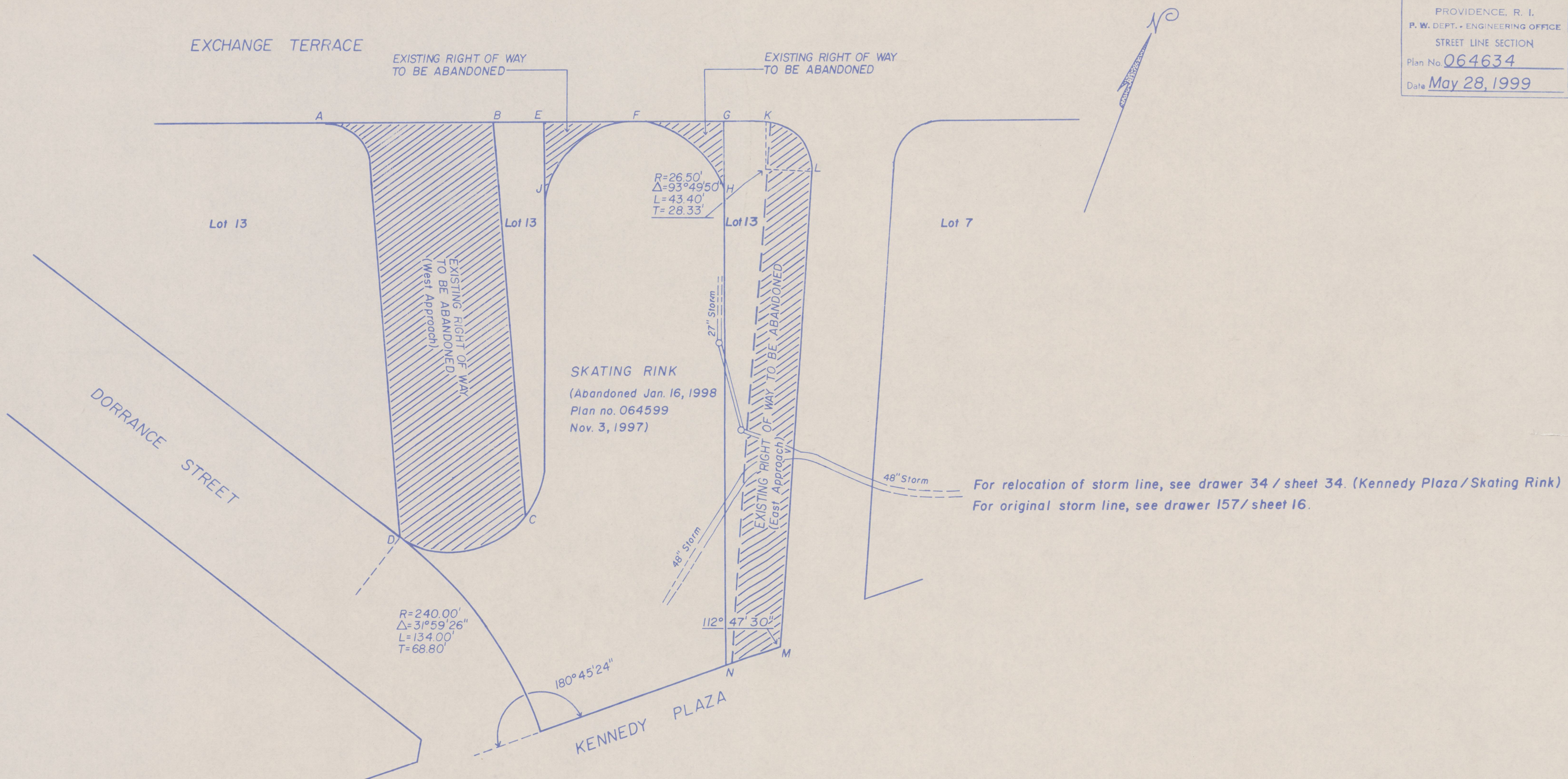


PROVIDENCE, R. I.
 P. W. DEPT. - ENGINEERING OFFICE
 STREET LINE SECTION
 Plan No. 064634
 Date May 28, 1999

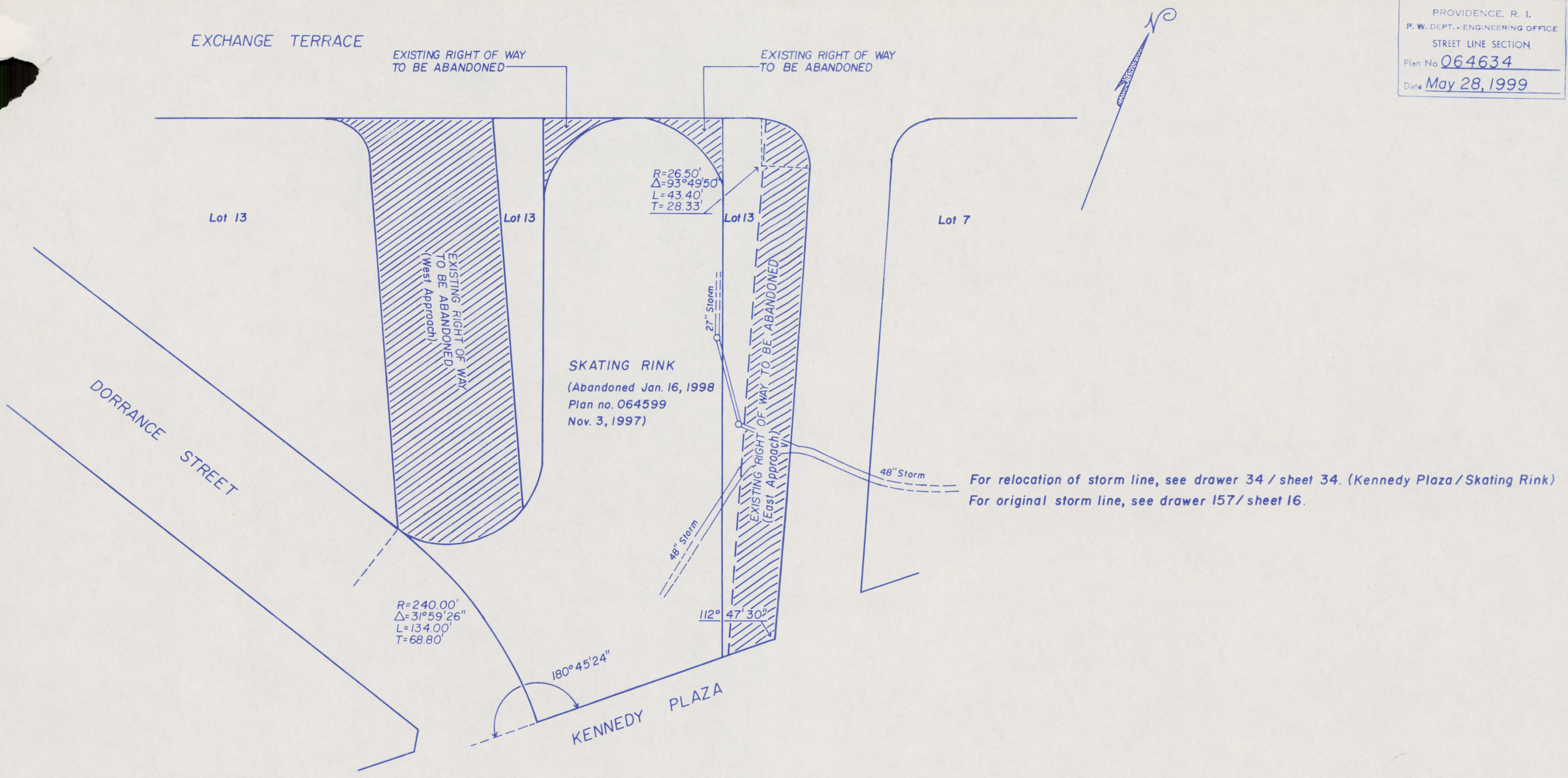


NOTES - Cross-hatched areas indicate proposed abandonments. (A-B-C-D-A), (E-F-G-H-F-J-E) & (K-L-M-N-K).
 Total square footage = 26,000.00±
 Full sewer easement will be required.

Lot numbers taken from A.P. 19

CITY OF PROVIDENCE, R. I.
 Public Works Dept. - Engineering Office
 Showing Proposed abandonment of East Approach & West Approach
 Drawn by A. Zisiades Checked by J.T.M.
 Scale 1" = 40' Date 5-28-99
 Corrected [Signature] Associate Engr.
 Approved [Signature] CHIEF ENGINEER

PROVIDENCE, R. I.
 P. W. DEPT. - ENGINEERING OFFICE
 STREET LINE SECTION
 Plan No. 064634
 Date May 28, 1999



For relocation of storm line, see drawer 34 / sheet 34. (Kennedy Plaza / Skating Rink)
 For original storm line, see drawer 157 / sheet 16.

NOTES - Cross-hatched areas indicate proposed abandonments.
 Total square footage = 26,000.00±
 Full sewer easement will be required.

CITY OF PROVIDENCE, R. I.
 Public Works Dept. - Engineering Office
 Showing Proposed abandonment of East Approach & West Approach
 Drawn by A. Zisiades Checked by J.T.M.
 Scale 1" = 40' Date 5-28-99
 Correct [Signature] Associate Engr.
 Approved _____ CHIEF ENGINEER

Lot numbers taken from A.P. 19