

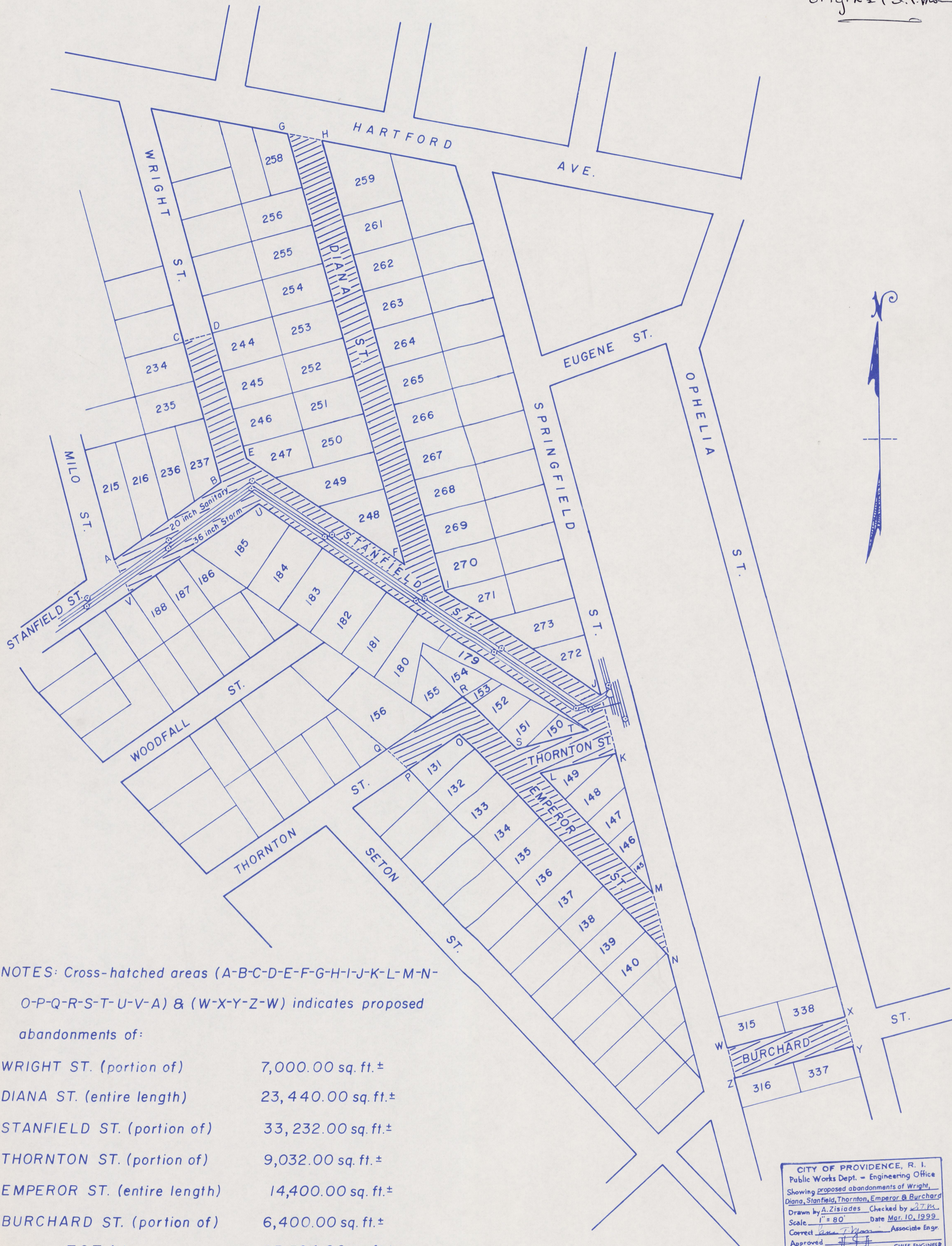
NOTES: Cross-hatched areas (A-B-C-D-E-F-G-H-I-J-K-L-M-N-O-P-Q-R-S-T-U-V-A) & (W-X-Y-Z-W) indicates proposed abandonments of:

WRIGHT ST. (portion of)	7,000.00 sq. ft.±
DIANA ST. (entire length)	23,440.00 sq. ft.±
STANFIELD ST. (portion of)	33,232.00 sq. ft.±
THORNTON ST. (portion of)	9,032.00 sq. ft.±
EMPEROR ST. (entire length)	14,400.00 sq. ft.±
BURCHARD ST. (portion of)	6,400.00 sq. ft.±
<b>TOTAL =</b>	<b>93,504.00 sq. ft.±</b>
Full sewer easement for that portion of Stanfield St.	

Lot numbers taken from A.P. 115

CITY OF PROVIDENCE, R. I.  
 Public Works Dept. - Engineering Office  
 Showing proposed abandonments of Wright,  
 Diana, Stanfield, Thornton, Emperor & Burchard  
 Drawn by A. Zisiades Checked by J.T.M.  
 Scale 1" = 80' Date Mar. 10, 1999  
 Corrected by J.T.M. Associate Engr.  
 Approved [Signature] CHIEF ENGINEER

*original S.T. Man*



NOTES: Cross-hatched areas (A-B-C-D-E-F-G-H-I-J-K-L-M-N-O-P-Q-R-S-T-U-V-A) & (W-X-Y-Z-W) indicates proposed abandonments of:

WRIGHT ST. (portion of)	7,000.00 sq. ft.±
DIANA ST. (entire length)	23,440.00 sq. ft.±
STANFIELD ST. (portion of)	33,232.00 sq. ft.±
THORNTON ST. (portion of)	9,032.00 sq. ft.±
EMPEROR ST. (entire length)	14,400.00 sq. ft.±
BURCHARD ST. (portion of)	6,400.00 sq. ft.±
<b>TOTAL =</b>	<b>93,504.00 sq. ft.±</b>
Full sewer easement for that portion of Stanfield St.	

Lot numbers taken from A.P. 115

CITY OF PROVIDENCE, R. I.  
 Public Works Dept. - Engineering Office  
 Showing proposed abandonments of Wright,  
 Diana, Stanfield, Thornton, Emperor & Burchard  
 Drawn by A. Zisiades Checked by J.T.P.  
 Scale 1" = 80' Date Mar. 10, 1999  
 Corrected by J.T.P. Associate Engr.  
 Approved: *[Signature]* CHIEF ENGINEER

*original S.T. Man*