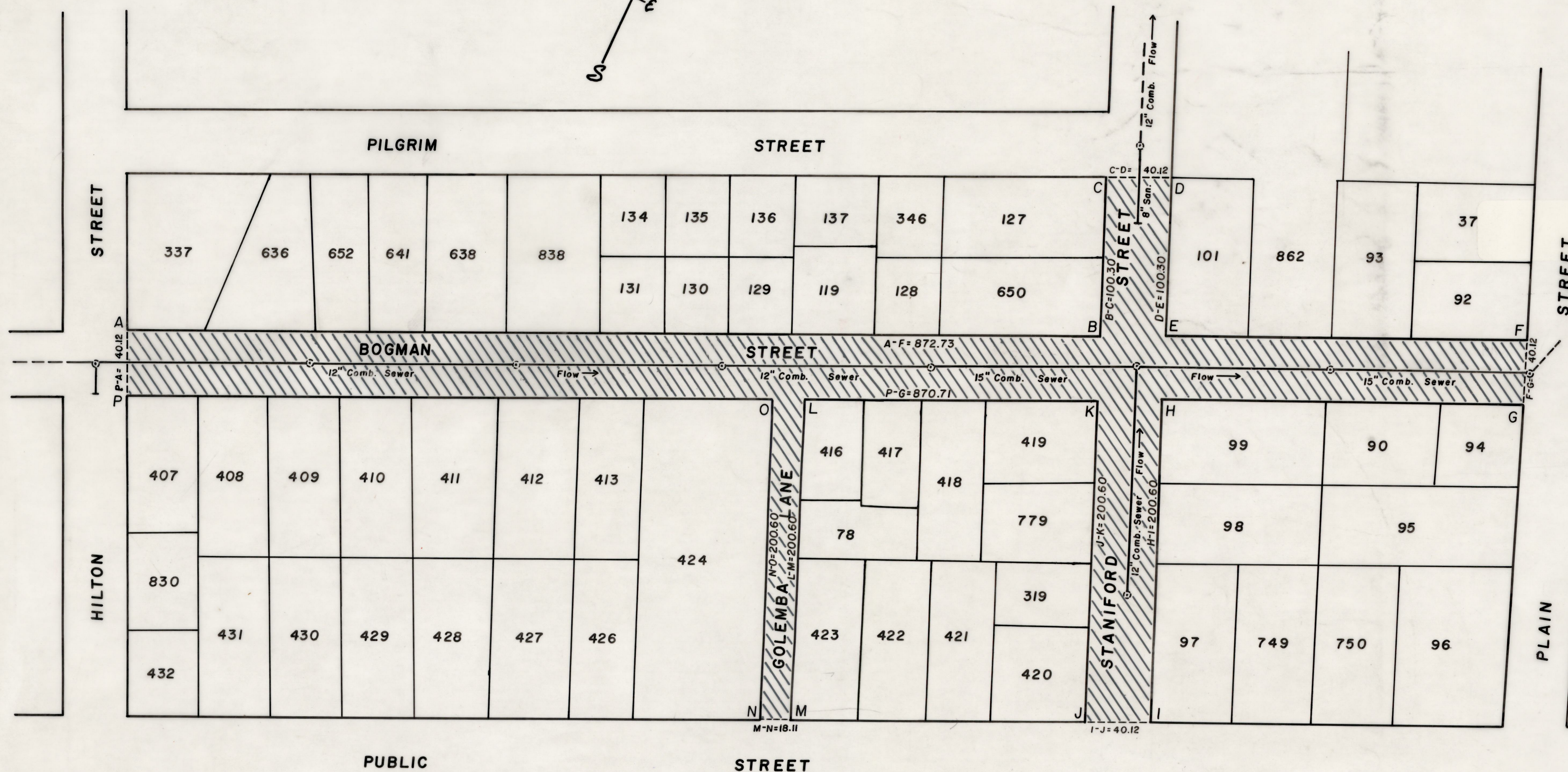
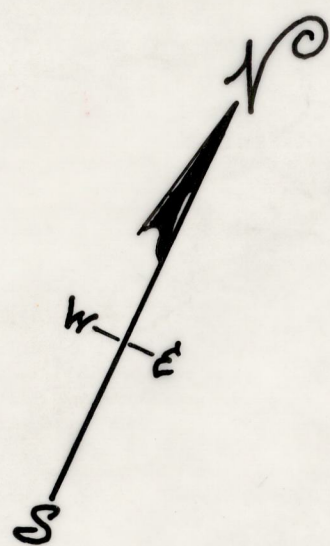


PROVIDENCE, R. I.  
 P. W. DEPT. - ENGINEERING OFFICE  
 STREET LINE SECTION  
 Plan No. 064617  
 Date Dec. 22, 1998



NOTES: Cross-hatched area (A-B-C-D-E-F-G-H-I-J-K-L-M-N-O-P-A) indicates proposed abandonments.

BOGMAN ST. (Hilton St. to Plain St.)

GOLEMBA LANE (Public St. to Bogman St.)

STANIFORD ST. (Pilgrim St. to Public St.)

Dimensions and utilities shall be verified in the field by the contractor(s). Full sewer easement will be required.

Total square footage = 50,678.38'

Lot Numbers Taken From A.P. 45

CITY OF PROVIDENCE, R. I.  
 Public Works Dept. - Engineering Office  
 Showing Proposed abandonments of Bogman St.,  
 Staniford St. & Golemba Lane  
 Drawn by A. ZISIADIS Checked by J. J. M.  
 Scale 1" = 50' Date DEC. 22, 1998  
 Corrected by J. J. M. Associate Engr.  
 Approved: [Signature] CHIEF ENGINEER