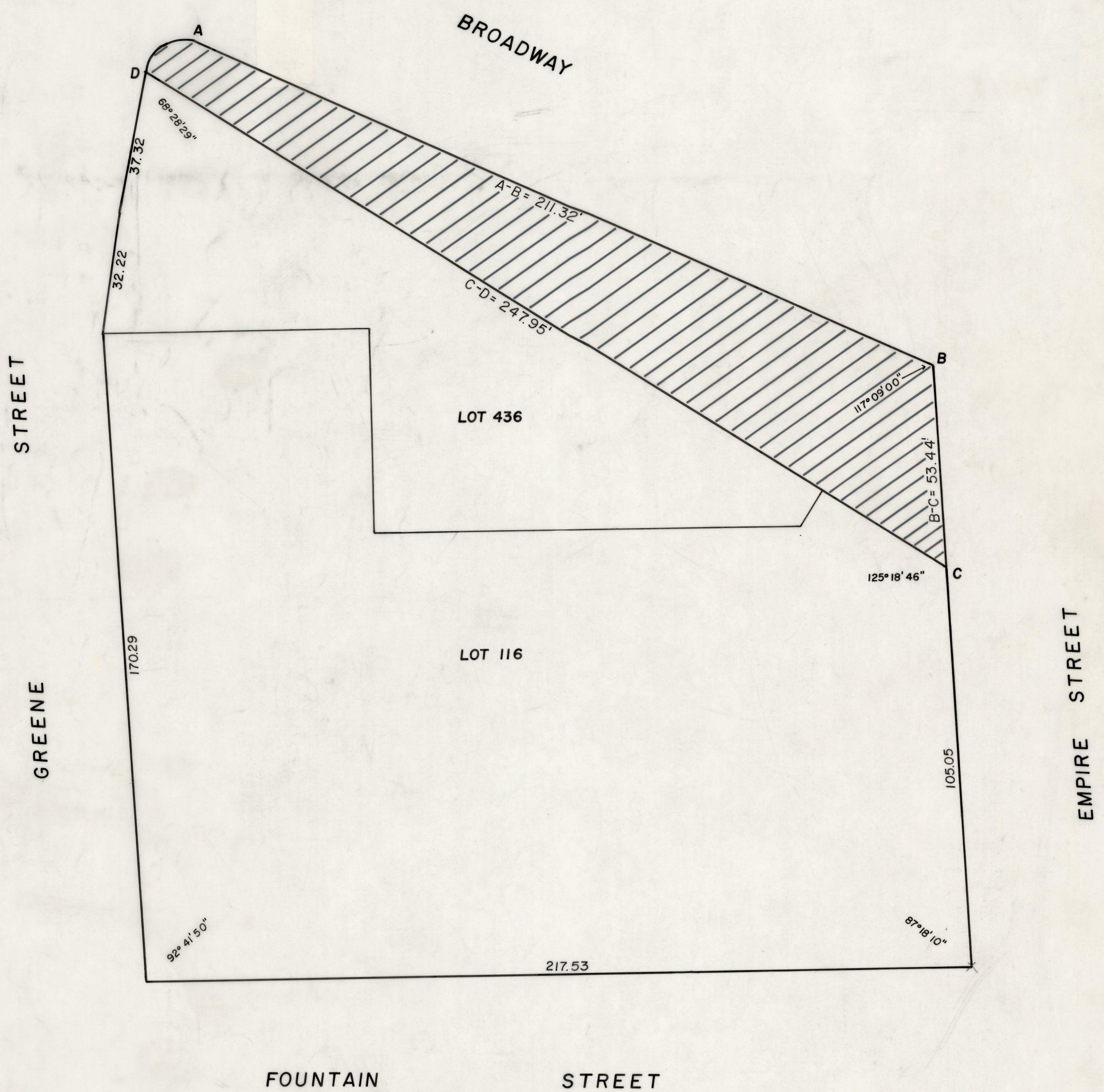


PROVIDENCE R. I.
P. W. DEPT. ENGINEERING OFFICE
STREET LINE SECTION
Plan No. 064614
Date Oct. 13, 1998



NOTES: Cross-hatched area (A-B-C-D-A) indicates proposed abandonment.
 Total square footage = 6,748'

Lot numbers taken from A.P. 25

CITY OF PROVIDENCE, R. I.
Public Works Dept. - Engineering Office
Showing Proposed abandonment of a portion of Broadway.
Drawn by A. Zisoides Checked by S. T. W.
Scale 1" = 20' Date 10-13-98
Corrected by T. M. Associate Engr.
Approved: [Signature] 10/13/98