

The record map is entitled  
 " PLAT  
 OF  
 THE HARDENBERGH PURCHASE  
 ON SMITH'S HILL  
 Alfred Metcalf Surveyor.  
 1856. "

Copied on card 335.

Map of  
Clara St Lots.  
 IMPROVED SEWERAGE.  
 Scale 50.

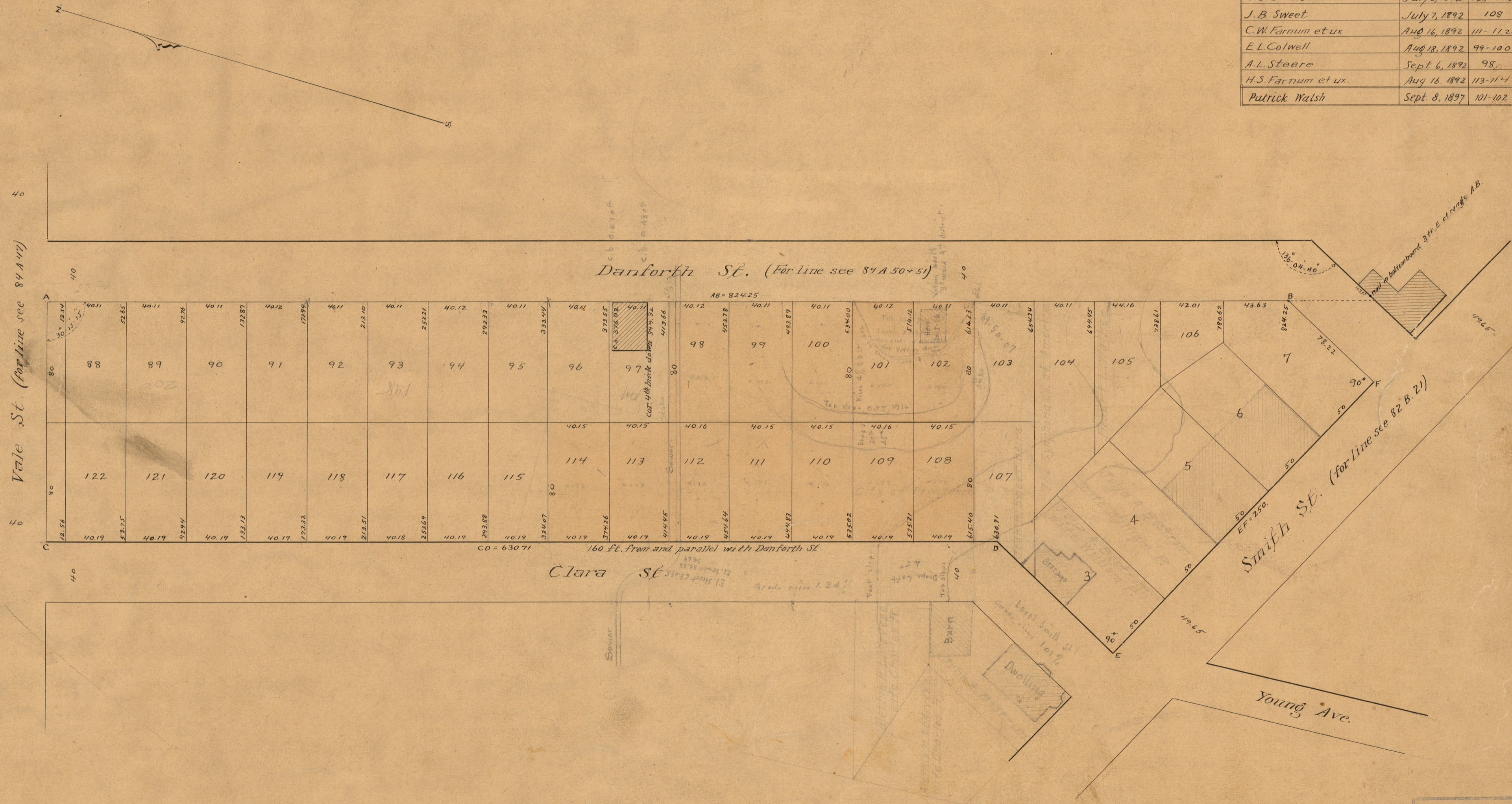
REGISTERED IN L.  
 CITY ENGINEER'S OFFICE  
 CITY PROPERTY DEPT.

OCT 1 1896

025647

City of Prov. purchased as follows

of	Date	Lot	Book	Page
S.S. Sweet	July 6, 1892	109-110	378	98
J.B. Sweet	July 7, 1892	108	378	99
C.W. Farnum et ux	Aug 16, 1892	111-112	378	168
E.L. Colwell	Aug 18, 1892	99-100	378	186
A.L. Steere	Sept 6, 1892	98	378	187
H.S. Farnum et ux.	Aug 16, 1892	113-114	378	188
Patrick Walsh	Sept. 8, 1897	101-102	419	317



Vale St. (for line see 84 A 47)

Danforth St. (for line see 84 A 50+51)

Smith St. (for line see 82 B. 21)

Clara St.

Young Ave.

OFFICE No. 13025  
 DRAWER " 772  
 SHEET " 49