

Area = 16017 2 sft out of 129

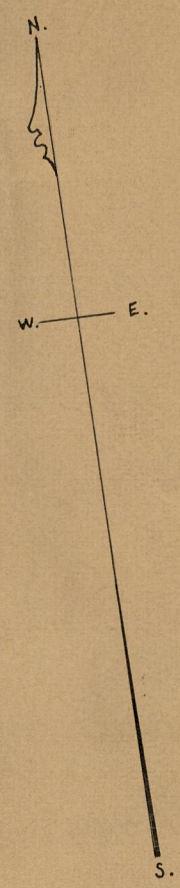
MAP OF MANTON AVE. SCHOOL EST.

Scale 30 ft per inch.

PROVIDENCE, R. I.
CITY ENGINEER'S OFFICE
CITY PROPERTY DEPT.

July 17, 1891.

018116



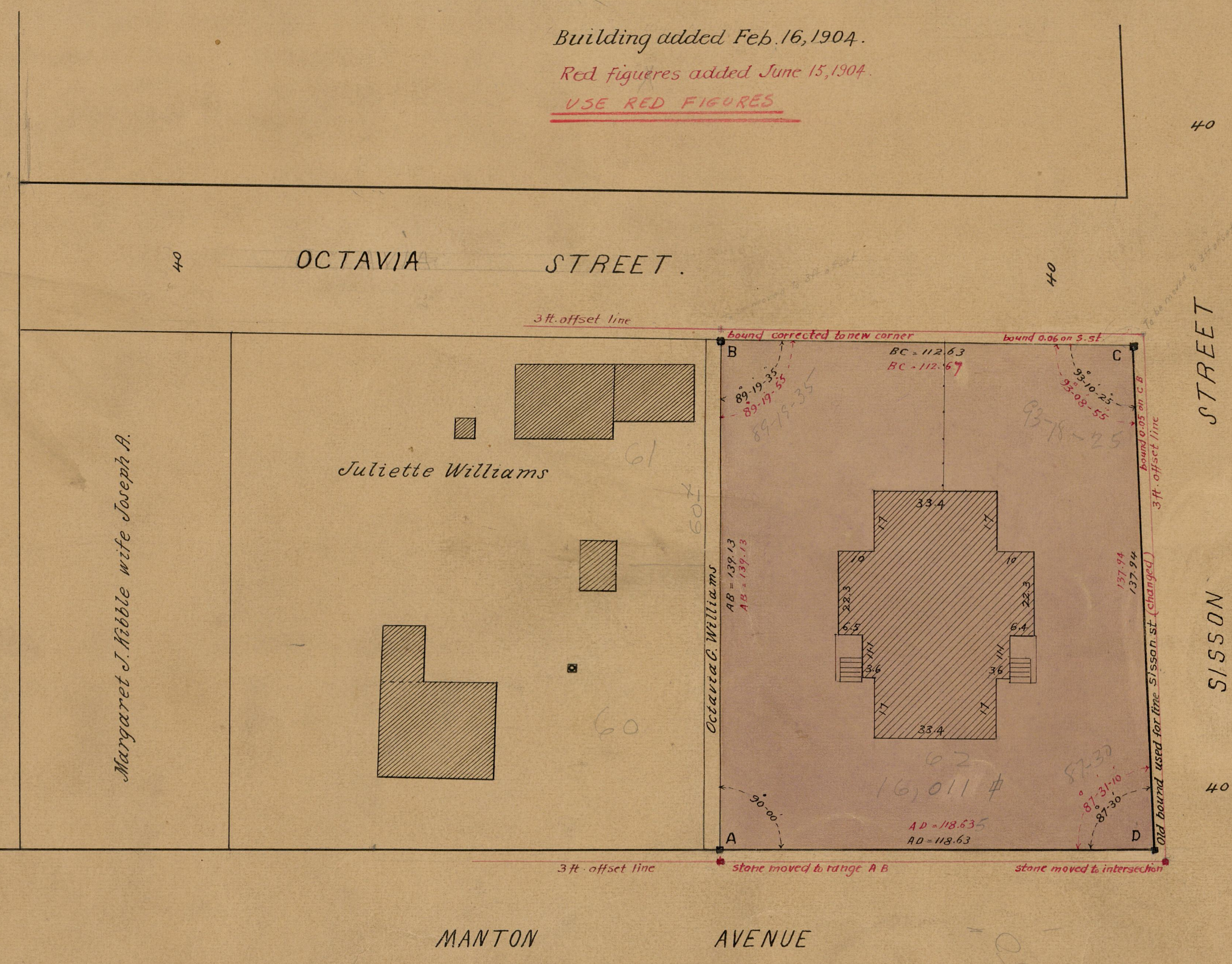
Stone bounds were placed at points ABCD Aug 18, 1892.

Octavia G. Williams, by guardian, sold to City of Providence July 10, 1891
lot ABCD price \$4000. See deed book No. 366 page 404.

Building added Feb. 16, 1904.

Red figures added June 15, 1904.

USE RED FIGURES



Margaret J. Hibble wife Joseph A.

Juliette Williams

Octavia G. Williams

MANTON AVENUE

SISSON STREET

Ranging to stone bound about 312 ft. from M. ave. (OK)

Stone 0.37 off M. ave.
" on line S. st.

OFFICE No.	10894
DRAWER	772
SHEET	47