

June 12, 1891

017915

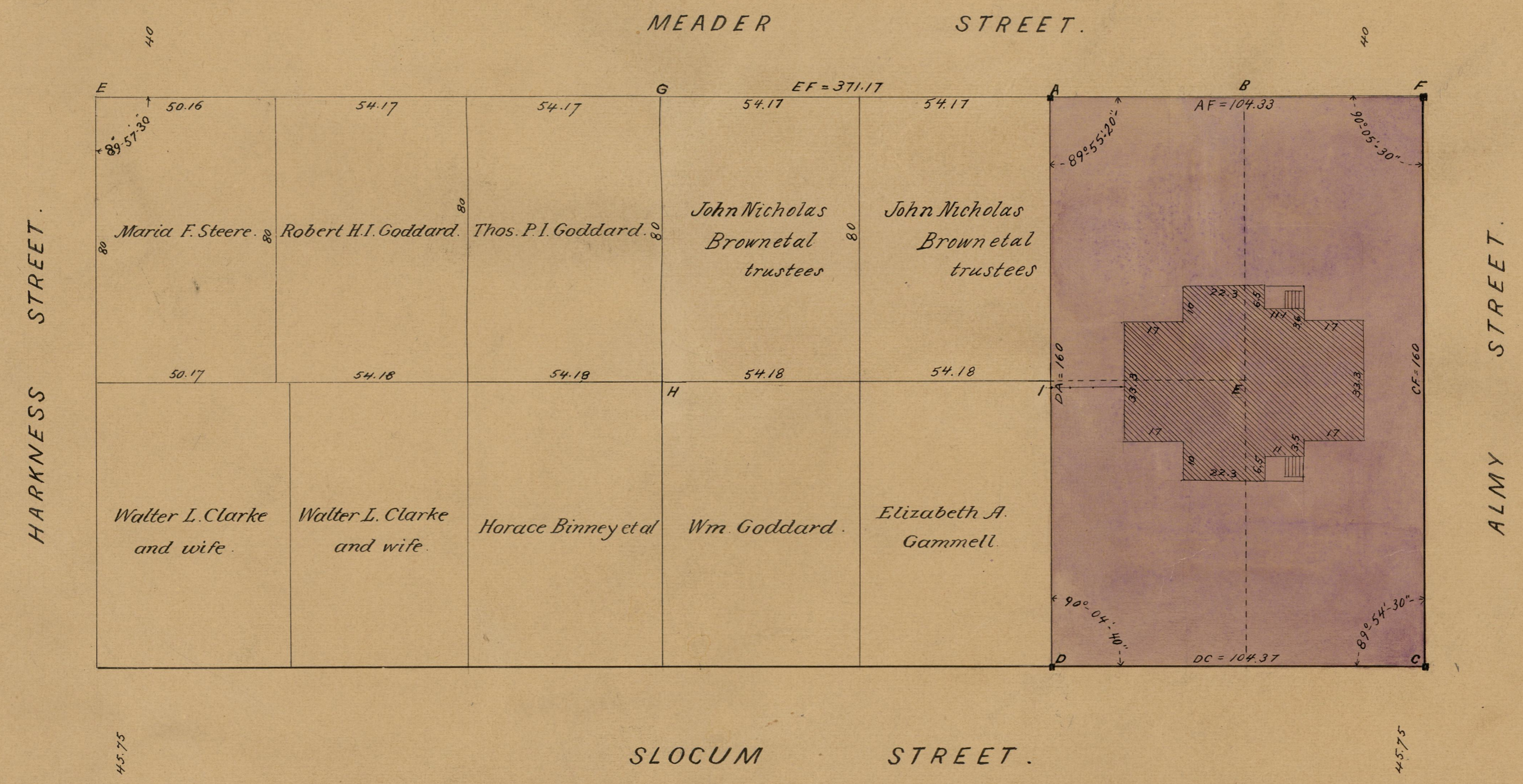
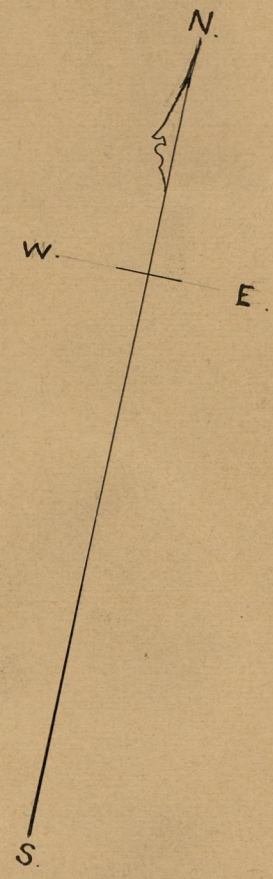
MAP OF THE Meader St. School Est.

Scale 30ft. per inch.

Area of AFCD = 16,696 square feet.

Stone bounds were placed at corners AFCD Aug 15, 1892.

City of Providence bought of J. Nicholas Brown et al. June 18, 1891 Lot GBEH see D.B. 366 p. 189.
City of Providence sold to J. Nicholas Brown et al. Oct. 10, 1891 lot A IHG see D.B. 368 p. 265. John Nicholas Brown et al. trustees sold to City of Providence Oct 10, 1891 lot B C D F I E see D.B. 369 p. 210.



OFFICE No. 10860
DRAWER " 772
SHEET " 43