

July 14, 1884

010180

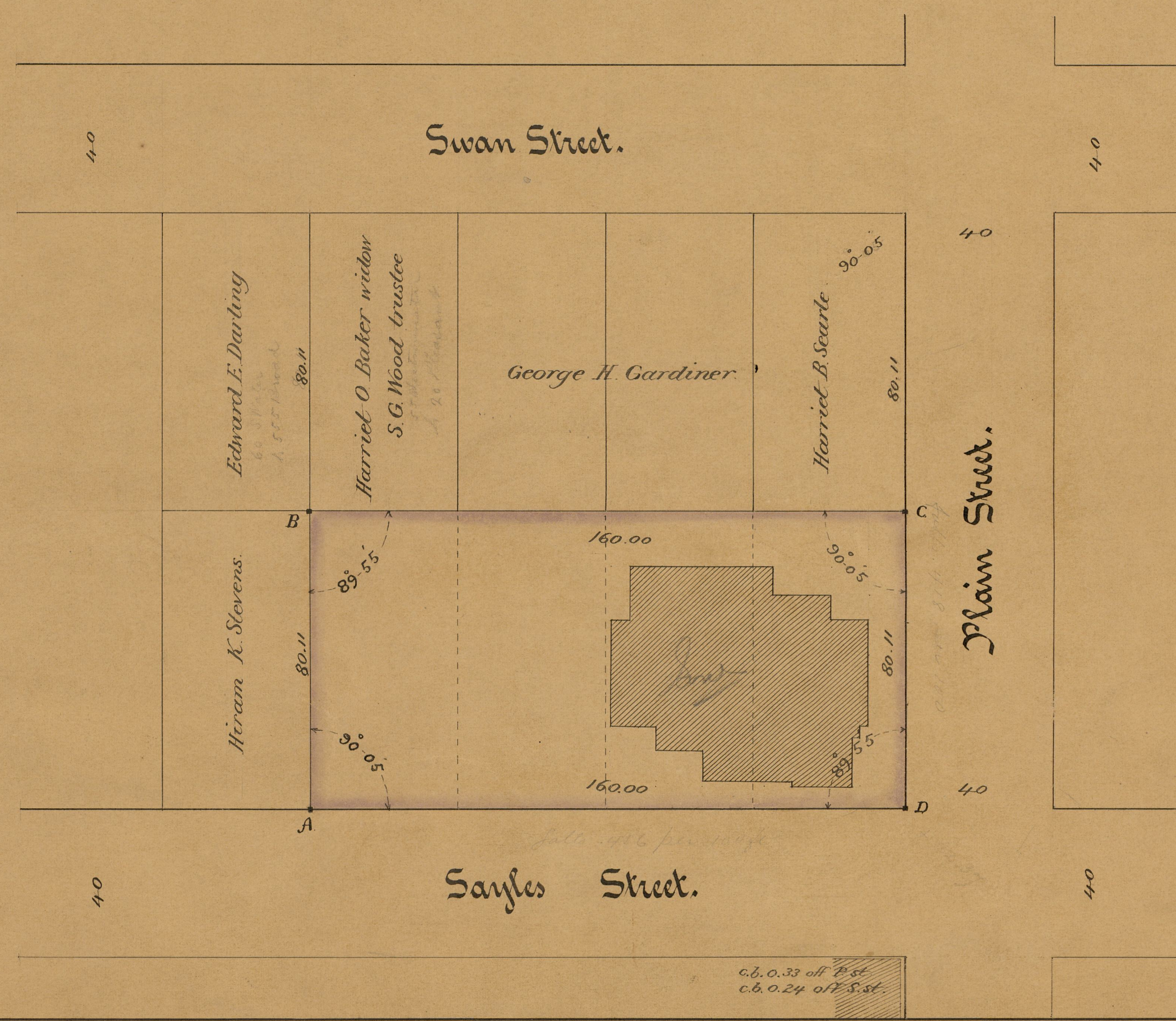
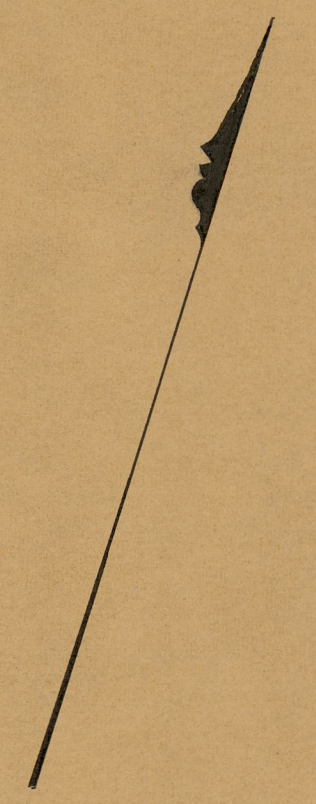
Map of Plain St. School Estate.

Scale = 30 ft per inch.

*Hiram K. Stevens sold to City of Providence July 3, 1884 -
 lots 156, 167, 186 & 197 on a plat called the Burgess Dower
 Plat recorded in the town of Cranston in Book of Plats
 No. 1 page 10 See Deed Book 325 page 439*

*NOTE Plain and Sayles Sts. have not been received
 consequently these streets are subject to any
 change the Board of Aldermen may adopt.*

*Stone bounds were placed at points A, B, C, & D.
 September 26, 1885.*



OFFICE No. 8113
 DRAWER ,, 772
 SHEET 4