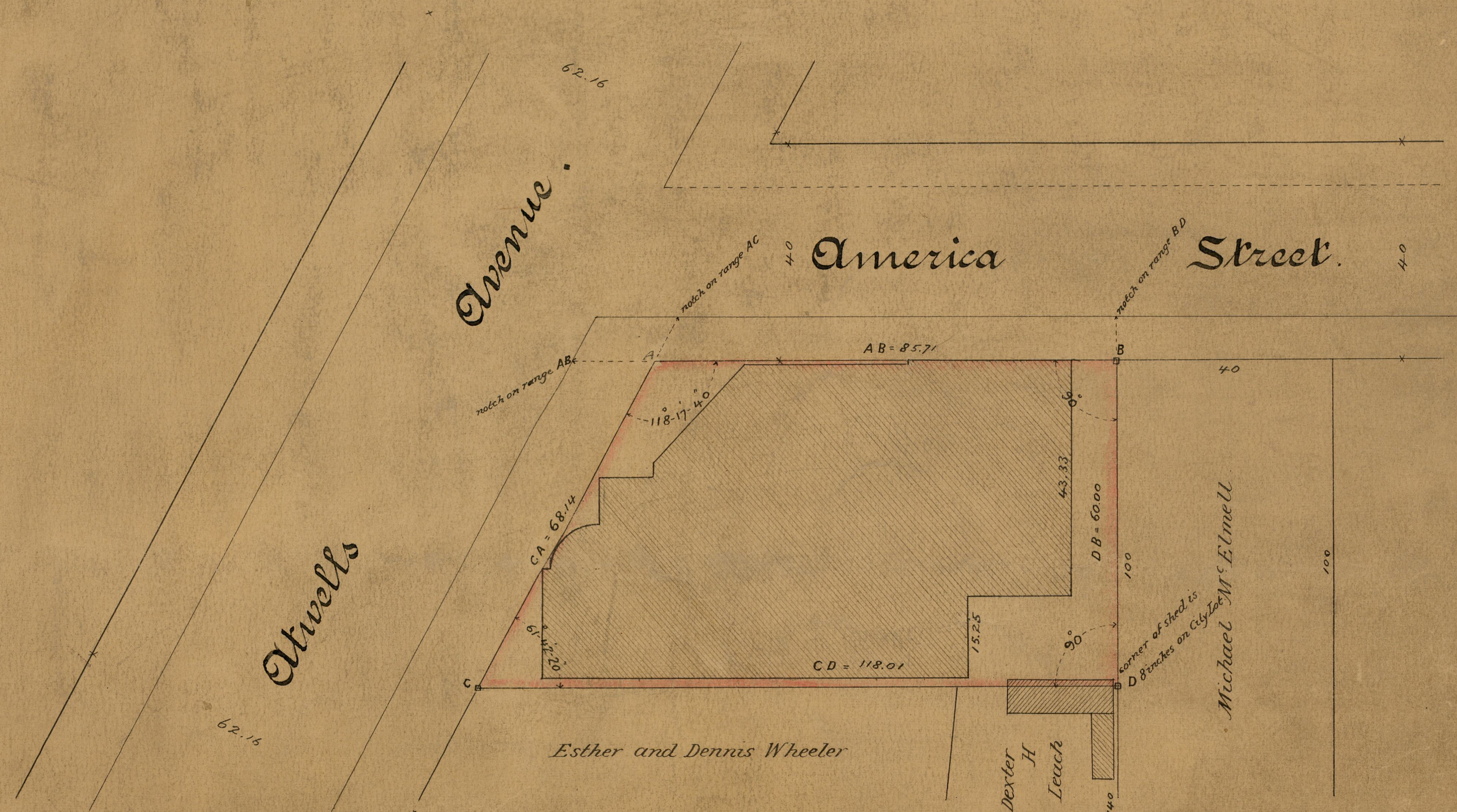
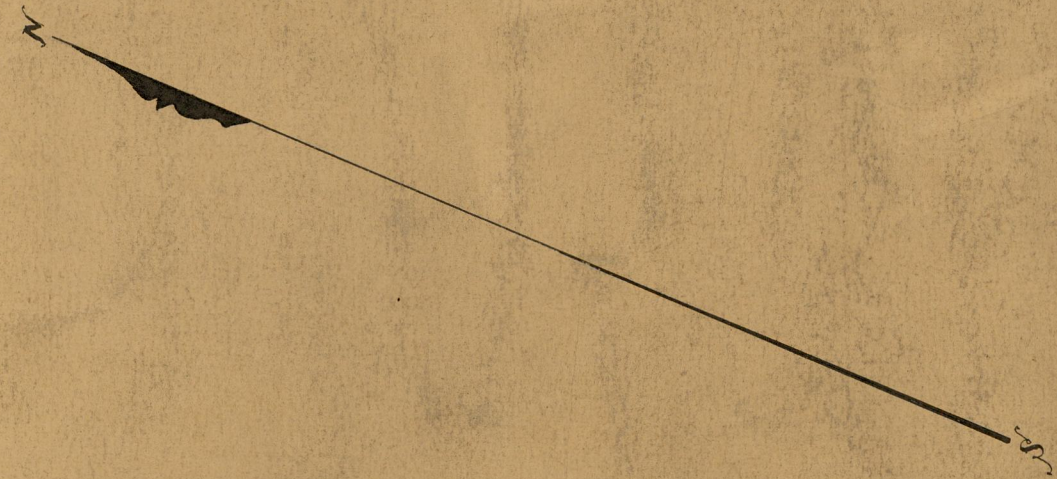


Map of
America St Lot.
 Scale 20ft. per inch.

PROVIDENCE, R. I.
 CITY ENGINEER'S OFFICE.
 CITY PROPERTY DEPT.
 JUNE 20, 1884.
 010063

*John M^c Cusker sold to City of Providence lot 22 on Plat of
 House Lots belonging to the estate of Sheldon Batley
 May 6, 1884. See Deed Book 326 page 291*

Stone bounds were placed at points BC & D DEC. 4, 1885.



OFFICE No. 8060
 DRAWER 772
 SHEET 2