

Estate of the THURBERS AV. SCHOOL

And Estate for General purposes
Scale 40ft per inch

PROVIDENCE, R. I.
CITY ENGINEER'S OFFICE,
CITY PROPERTY DEP'T.

Sept. 13, 1876

03479

4012

Face pickets 002 on Post

384.94 ft from Post to line E. st shown on Battery Plat
384.52 ft from face pickets to stone bound at Eddy street.

03479

152.84 ft to Myrtle st
19.50 stone bound on line of st

PLAIN STREET.

PLAIN STREET.

AUTUMN STREET

STREET

EDDY STREET.

THURBERS AVENUE.

Thomas Davis & George T. Clarke to School District No 4 lot ABCD Deed dated Oct. 1, 1855 See deed book 215 page 454

Thomas Davis to City of Providence lot BCEF Deed dated Mar. 28, 1871 See deed-book 192 page 498
March 22 1871 Res 412 approp. School house + lots

Thomas Davis to City of Providence lot EFHG Deed dated May 27, 1872 See deed book 198 page 507
May 20 1872 Res 594 approp. School house + lots

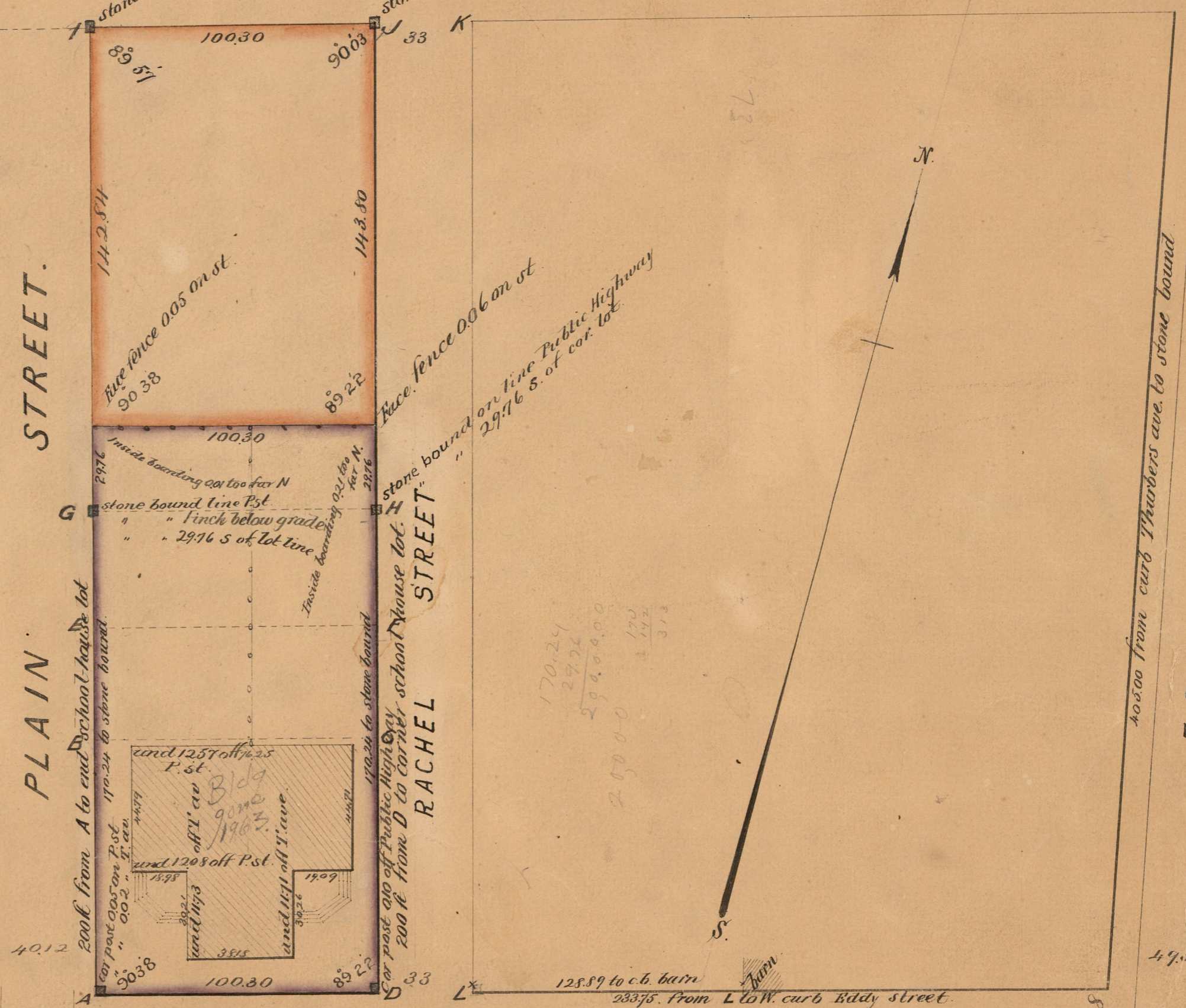
Thomas Davis to City of Providence lot G.I.H Deed dated June 28, 1873 See deed-book 242 p 293
June 16 1873 Res 43 changed to the Reserve fund

Thomas Davis to City of Providence D.J.K.L to be forever used as a public high-way see deed-book 241 p 98.

Being lots 230, 231, 296 & 297 on Assessor's Plat 54 School House Lot contains 20060 sq. ft.

Estate for general purposes contains 14375 sq. ft.

Stone bounds placed Sept. 13, 1876.



COMPARED
Wm. G. Brewer
City Engineer

OFFICE No. 2866
DRAWER " 771
SHEET " 8

Charles E. Cain