

PUBLIC ST. WARD ROOM LOT.

SCALE 40 FT. PER. INCH.

PROVIDENCE, R. I.
CITY ENGINEER'S OFFICE.
CITY PROPERTY DEPT.
NOV. 28, 1883
09486

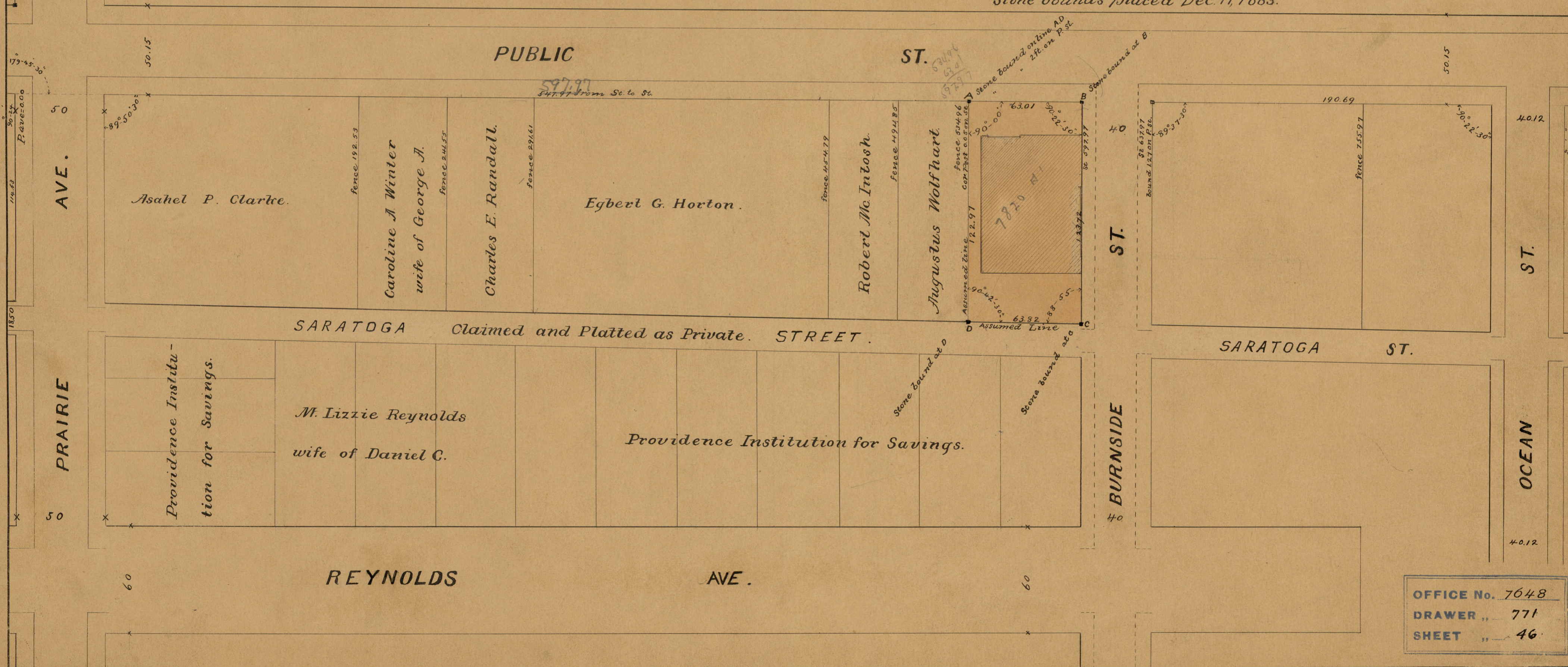


City of Providence bought of George T. Paine, trustee, July 18, 1883. D.B. 323 p. 283.
lot ABCD "measuring 62 ft. more or less on Public st 123 ft more or less on Burnside st. and 62 ft more or less on a gangway"

On this survey the fences were accepted as the dividing lines between the City and Augustus Wolfhart on the west and the City and the Providence Institution on the south

Stone bounds placed Dec. 11, 1883.

Stone bound at corner Sts.



OFFICE No. 7648
DRAWER " 771
SHEET " 46