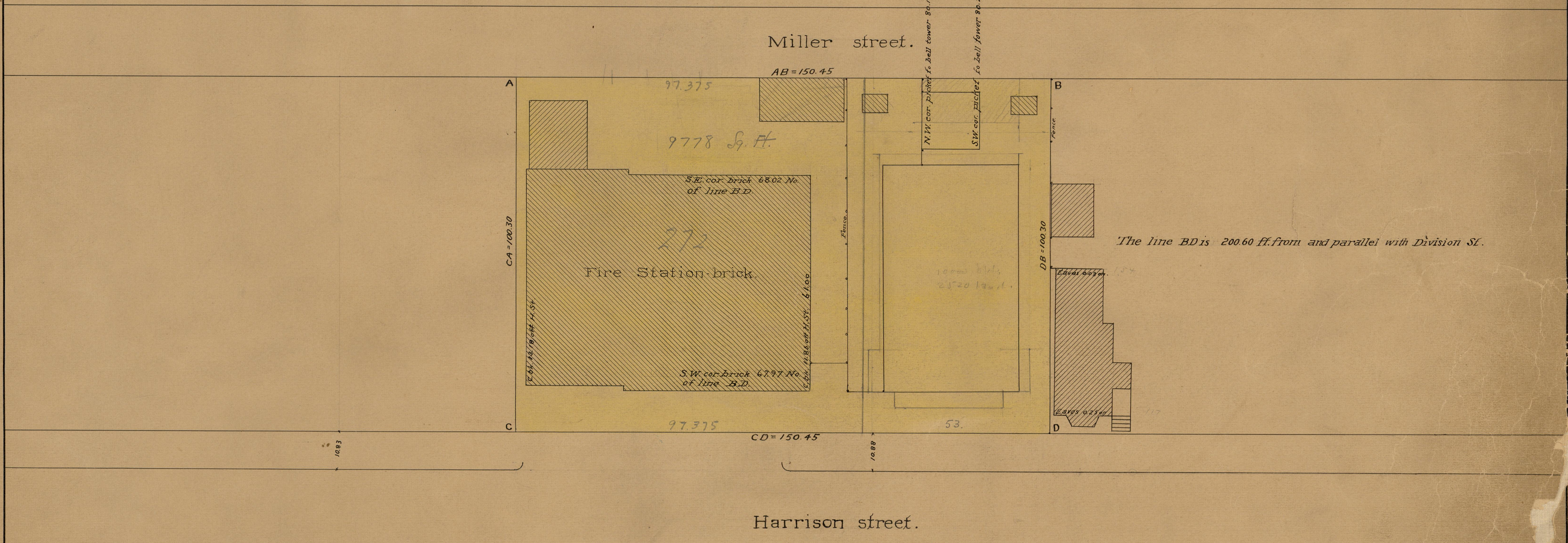
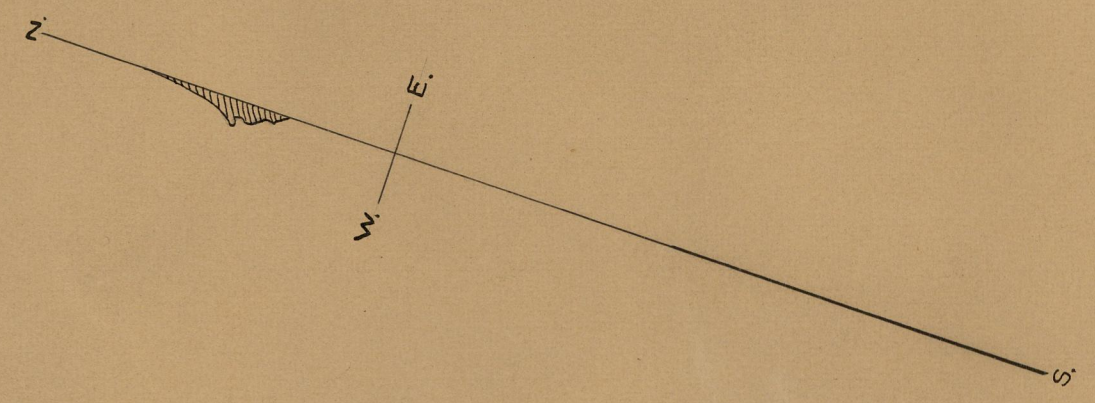


Map of
Harrison St. Station and Ward Room Lot.
 Scale 20 ft. per inch.

PROVIDENCE, R. I.
 CITY ENGINEER'S OFFICE.
 CITY PROPERTY DEP'T.
 July 12 1895
 024161

*This land is a part of the Dexter Donation Estate,
 and is leased to the City of Providence.*



Assessor's Plot 32
 Lot 272

Assessed
 \$2160.00

OFFICE No. 1264
 DRAWN 7
 SHEET

771
 39