

Area - 14789 sqft Oct 2/1909

MAP OF ATWELLS AVE. LOT.

SCALE 40 FT. PER INCH.

Stones were planted on this lot Aug 1st 1893.

Building added Feb. 15, 1904.

PROVIDENCE, R. I.
CITY ENGINEER'S OFFICE.
CITY PROPERTY DEPT.

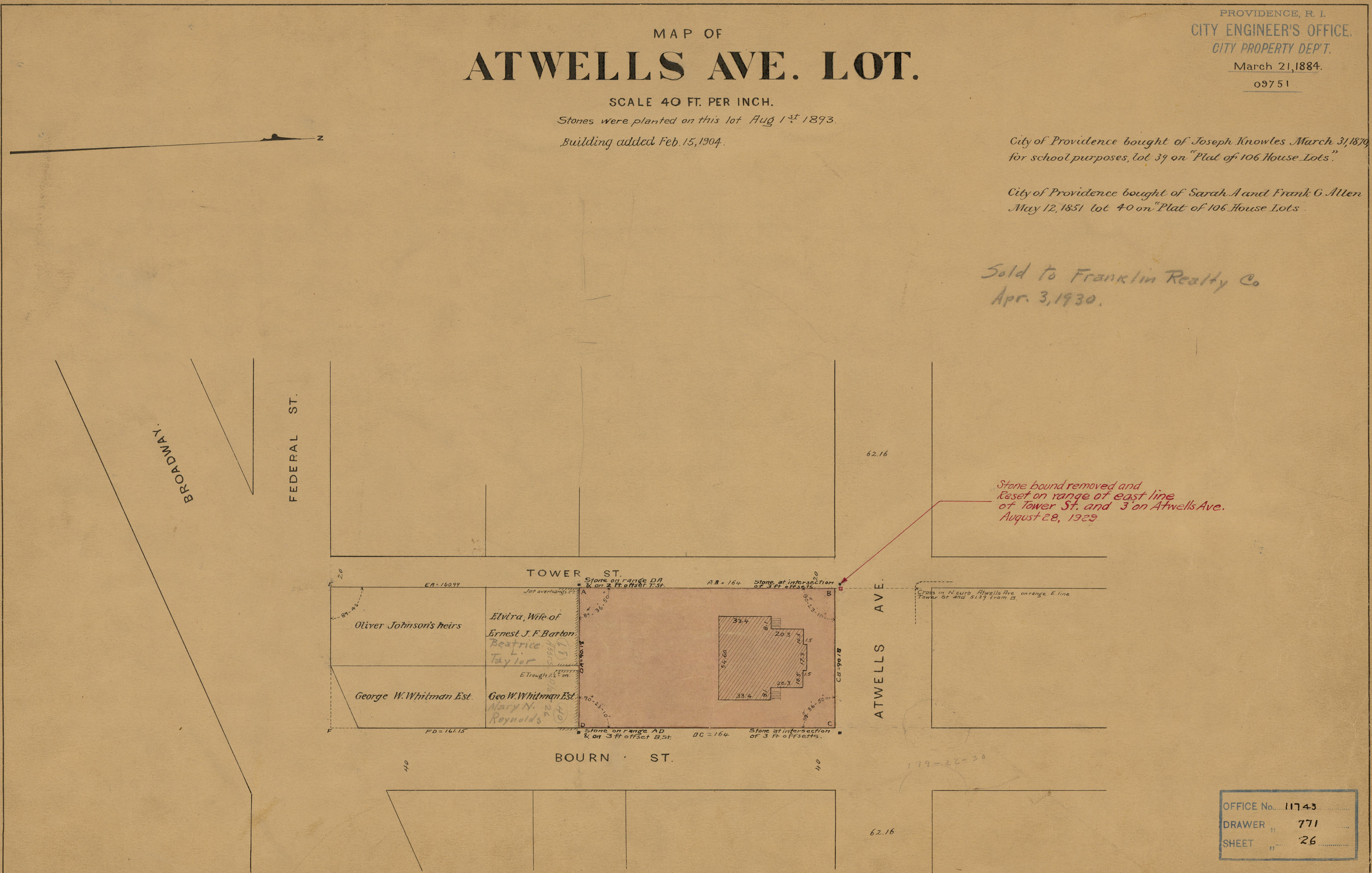
March 21, 1884.

09751

City of Providence bought of Joseph Knowles March 31, 1879
for school purposes, lot 39 on "Plat of 106 House Lots."

City of Providence bought of Sarah A and Frank G. Allen
May 12, 1851 lot 40 on "Plat of 106 House Lots."

Sold to Franklin Realty Co
Apr. 3, 1930.



Stone bound removed and
reset on range of east line
of Tower St. and 3' on Atwells Ave.
August 28, 1929

OFFICE No.	11743
DRAWER	771
SHEET	26