

OHIO AND CALIFORNIA AVENUE SCHOOL ESTATE

Scale 40 ft per inch.

PROVIDENCE, R. I.
CITY ENGINEER'S OFFICE.
CITY PROPERTY DEPT.

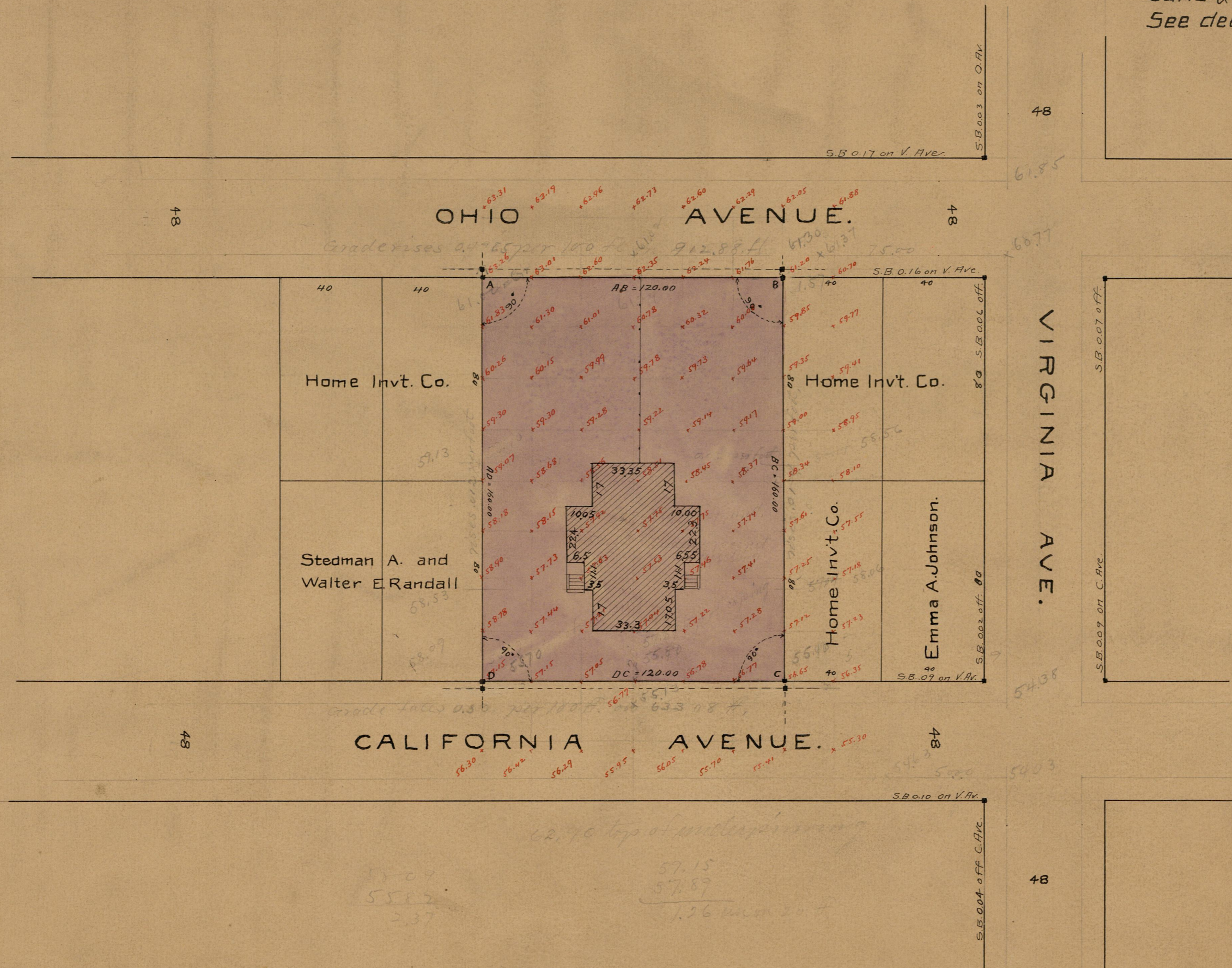
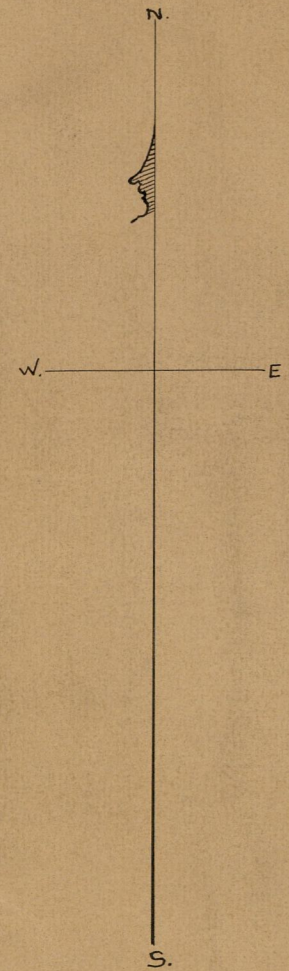
Feb. 23 1893.

020566

Stones were planted at A, B, C & D. Aug 19, 1893.
& removed to 3 ft. offset as shown below Aug 21, 1895.

The building was added to this plat Feb 2, 1904.

City of Providence bought of Home investment Co. Feb 16th 1893 lot A-B-C-D being lots 186-187-188-228-229 & 230 on "Home Investment Co. Plat No. 1 Washington Park surveyed and platted July 1891. Shedd Sarle & Shedd Engineers". Copied on card 639. See deed book 380 page 45.



OFFICE No.	11629
DRAWER	771
SHEET	21