

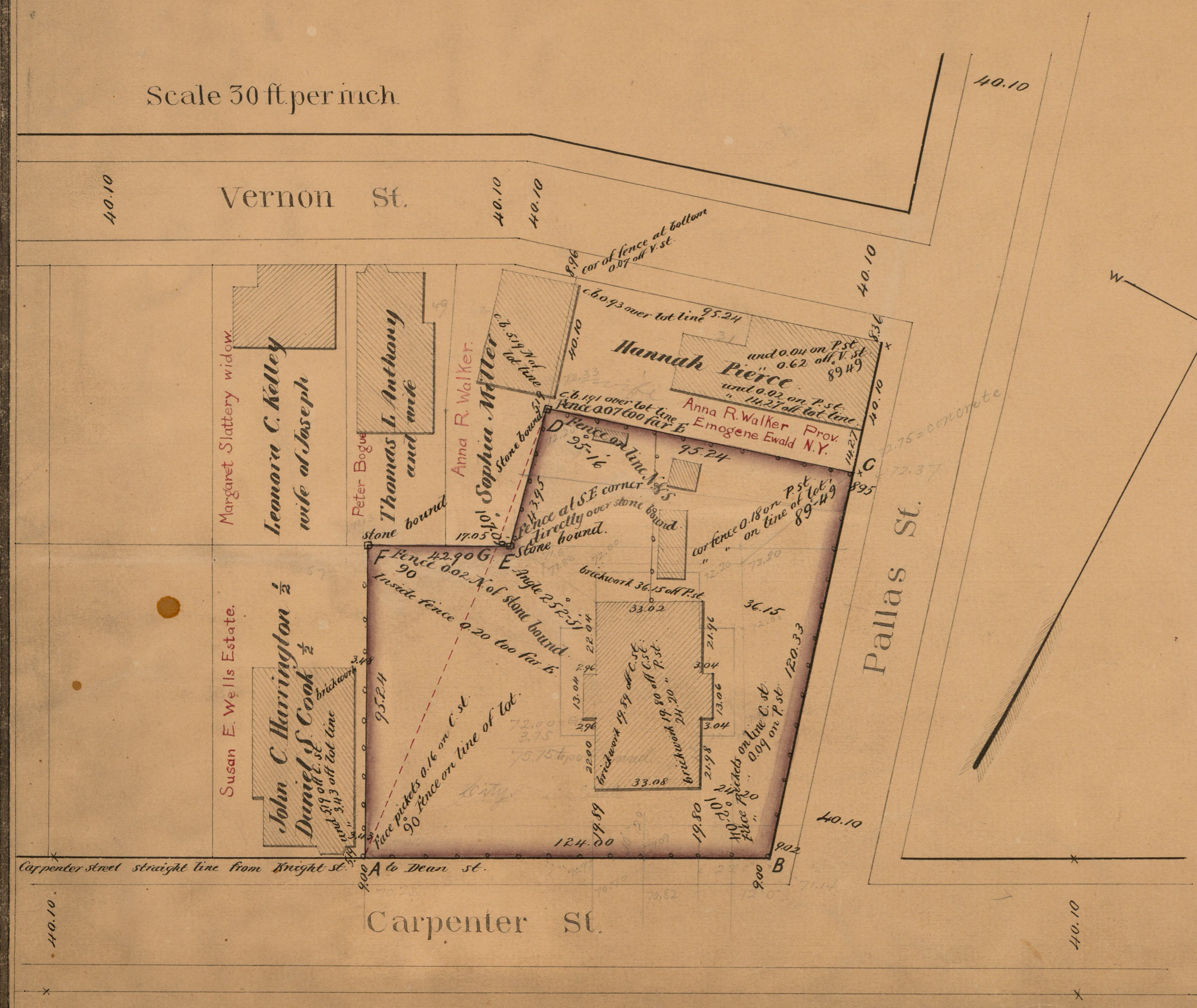
DEC. 1876

03543

MAP OF THE  
CARPENTER ST.  
**SCHOOL HOUSE**  
ESTATE

City Engineer's Office  
DEC. 1876.

Scale 30 ft. per inch



28-30

Bought of Dexter Pierce July 22<sup>nd</sup> 1850 the lot ABCD G bounded as follows AB by deed = 120 ft ± BC = 120 ft old Prov. measure. See deed recorded in Deed Book 118 page 254 see also plat of S. C. Kenyon land in Plat Book 1 page 54.

Bought of Wm. E. Richmond Sept. 25 1867 lot AFG bounded as follows AE by deed = 95.24 ft F.E. by deed = 40.56 ft. See deed recorded in Deed Book 179 page 336

See also Assessors plat 28 lot 30 (ABCD) and 55 (AEF)

At the points marked ABC stone bounds are to be placed.

At the points marked DEF stone bounds were placed June 1 1876

Area of lot ABCDEF - 16148 square feet.

Old Area in error. Feb 16 1864 16775 square feet

13394 } Margol.  
1807 }  
15203 }  
Area should be 16,003

COMPARED.

Wm. G. Brennan.  
Ass't Engineer.

OFFICE No.	2922
DRAWN	771
SHEET	2

Charles E. Linn

Per Massé