

Dec 23^d 1892

020421

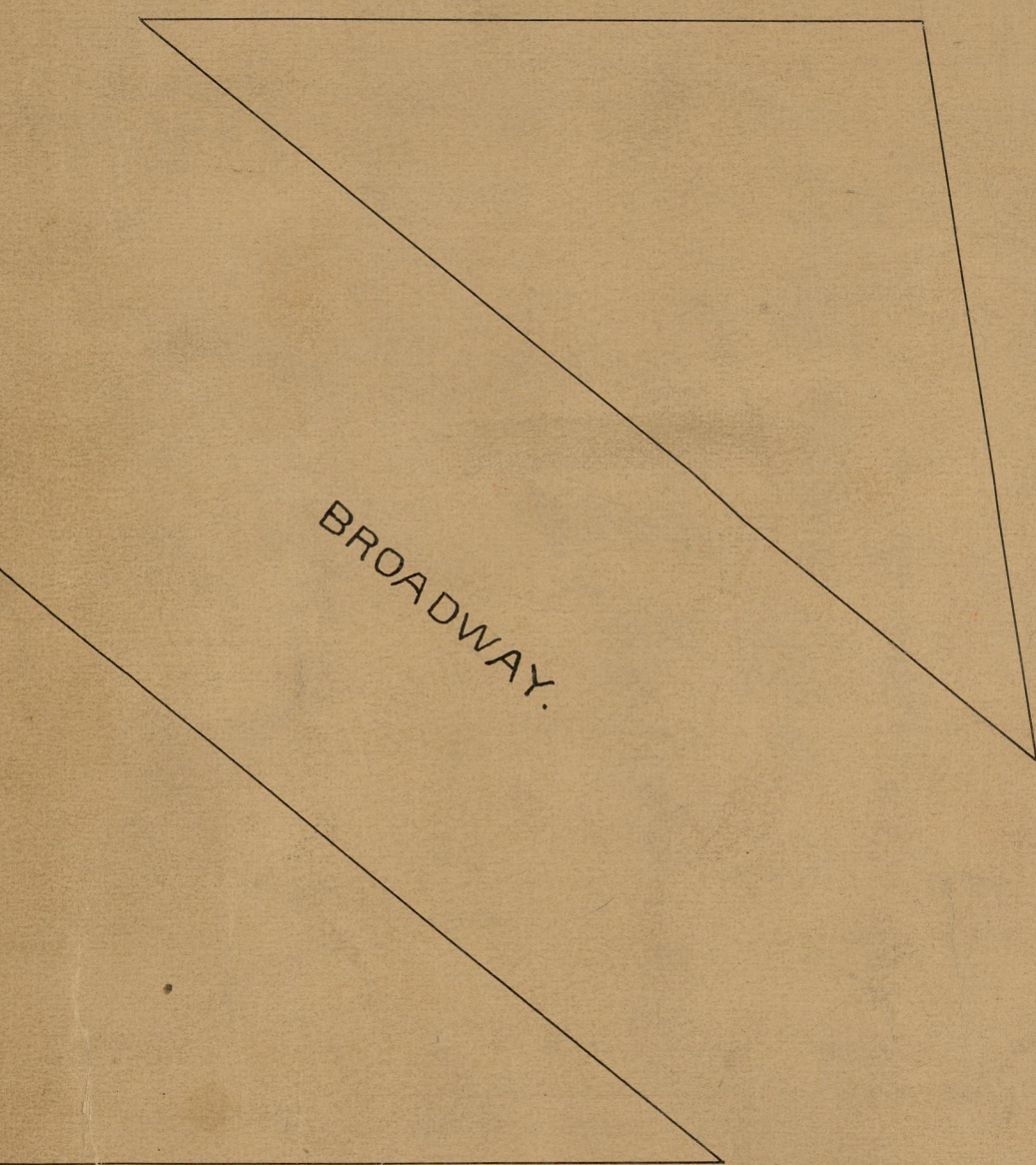
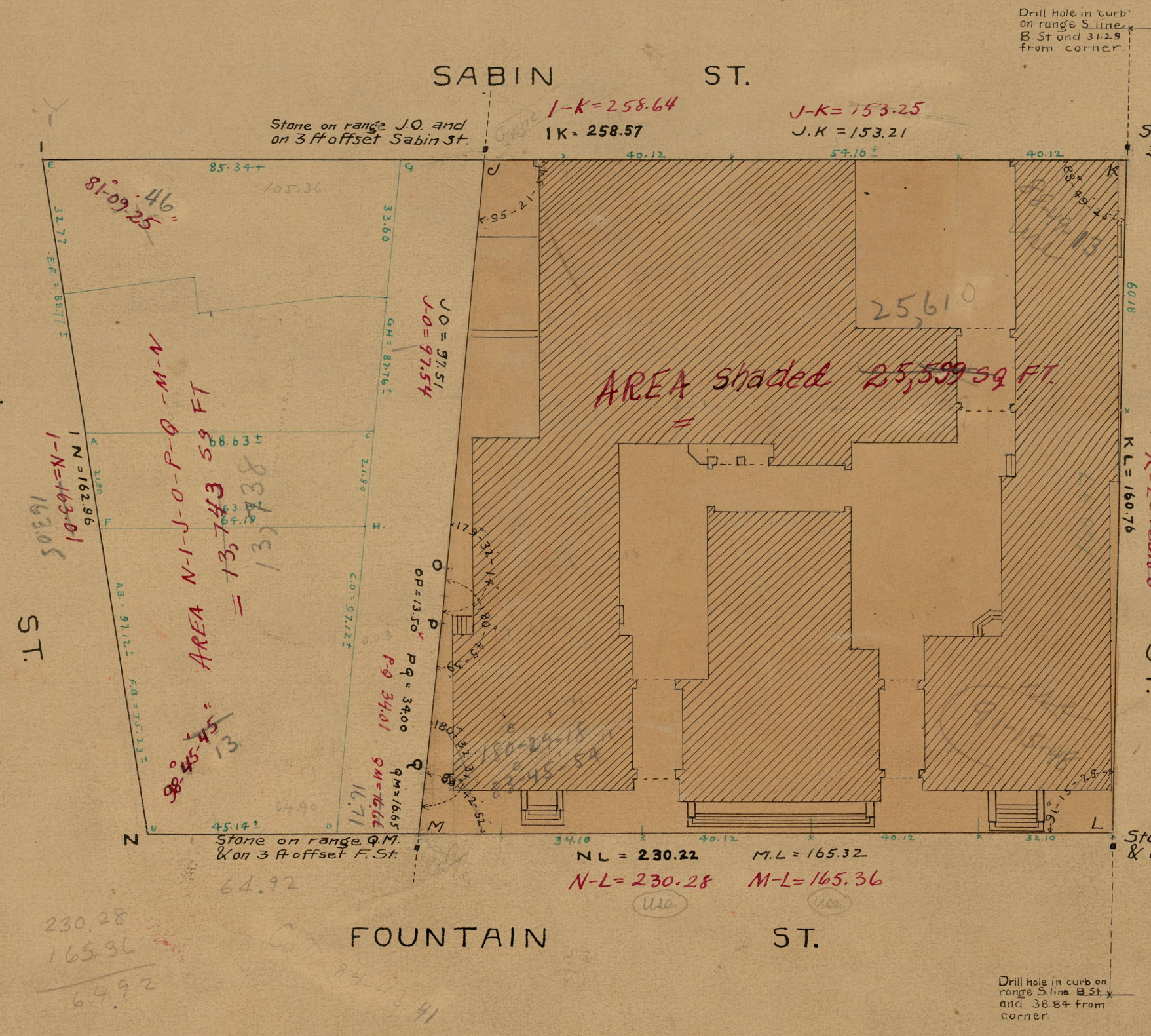
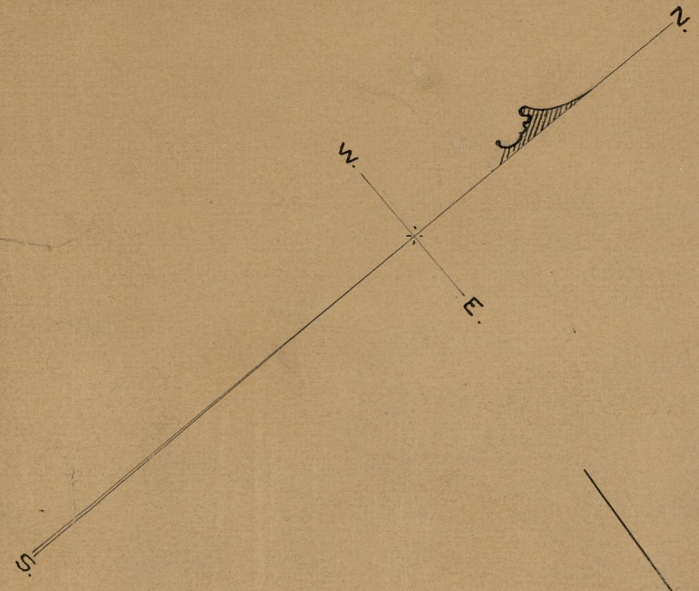
City of Providence bought of Chambers Calder & Co. a lot 40.12 by 60.18 on S.W. corner Sabin and Beverly streets deed March 2, 1893 recorded in book 380-115 also bought of Ethan Tourtellot Oct. 19, 1838 see D.B. 74 p. 132, of Thomas Brown Oct. 20, 1838 see D.B. 74 p. 154, of Martha Mauran May 25, 1853 see D.B. 133 p. 231 of John Eddy Nov. 18, 1853 see D.B. 134 p. 309 of Marshall B. Mead et al Oct. 3, 1854 see D.B. 137 p. 327. and of Pardon Taber Oct. 17, 1838. see D.B. 74 p. 124.

MAP OF

CENTRAL POLICE STATION

Scale 30 ft per in.

Area JKLMQPOJ = 25,589 Square Feet.
Chambers Calder & Co's Lot = 2413 ⁹⁹/₁₀₀ " " "
Stones were planted on this lot Aug. 2^d 1893.
Buildings were added to this map Feb. 19, 1904.



Figures in green are deed distances reduced to U.S. measure.

Note Red Figures U.S.M.
added Mar 31, 1947

OFFICE No. 11553
DRAWN 771
SHEET 19