

315-499
67839

STRIP from East River St. to Seekonk River.

Scale 10 ft. per inch.

JAN. 4. 1892

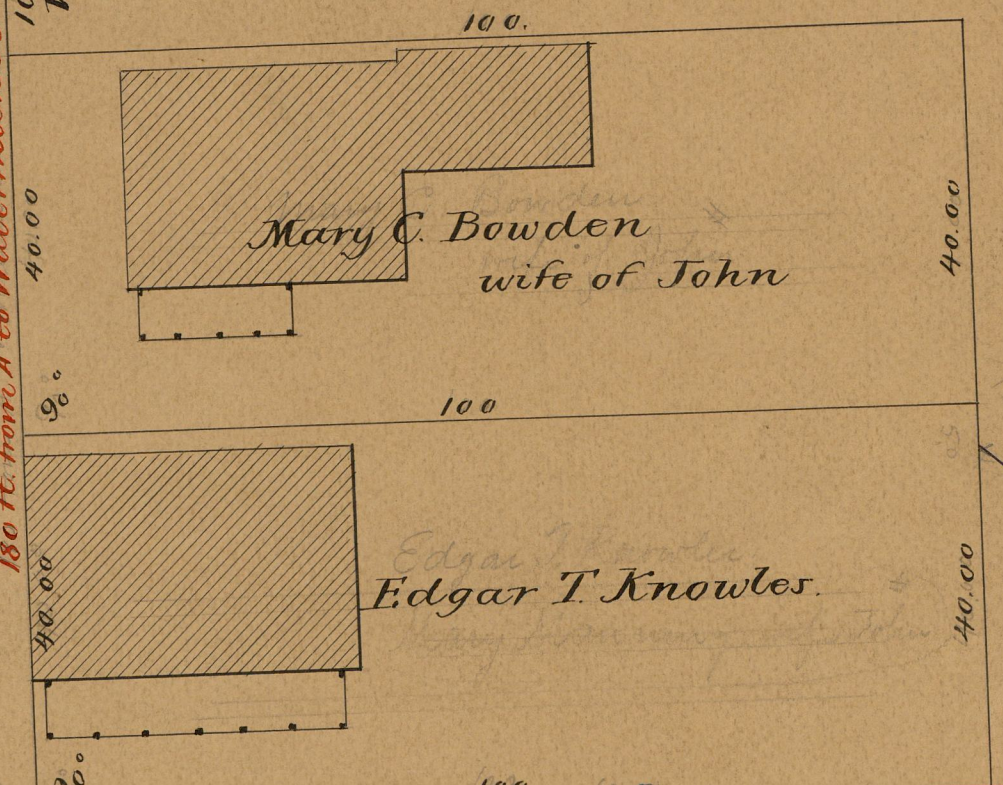
018756

Stone bound on line P. St.

PITMAN ST.

EAST RIVER ST.

180 ft. from A to Waterman St.
100 ft. to Waterman St.



$AD = 128.31 \pm$ $ED = 66.31 \pm$
 $Area ADCB = 1239 \frac{1}{2} sq. ft.$ $Area = 562 sq. ft.$
 $BC = 119.67 \pm$ $FC = 46.09 \pm$

Whipple V. Phillips 1/2
Walter M. Jackson 1/2

Piling x
Walt

Harbor line established April 1878

Whipple V. Phillips 1/2
Walter M. Jackson 1/2

SEEKONK RIVER

771
18

OFFICE No.
DRAWER
SHEET