

# ESTATE of the ALDRICH ST. SCHOOL

Scale 30 feet per inch

See 783/4 for Revised Plan

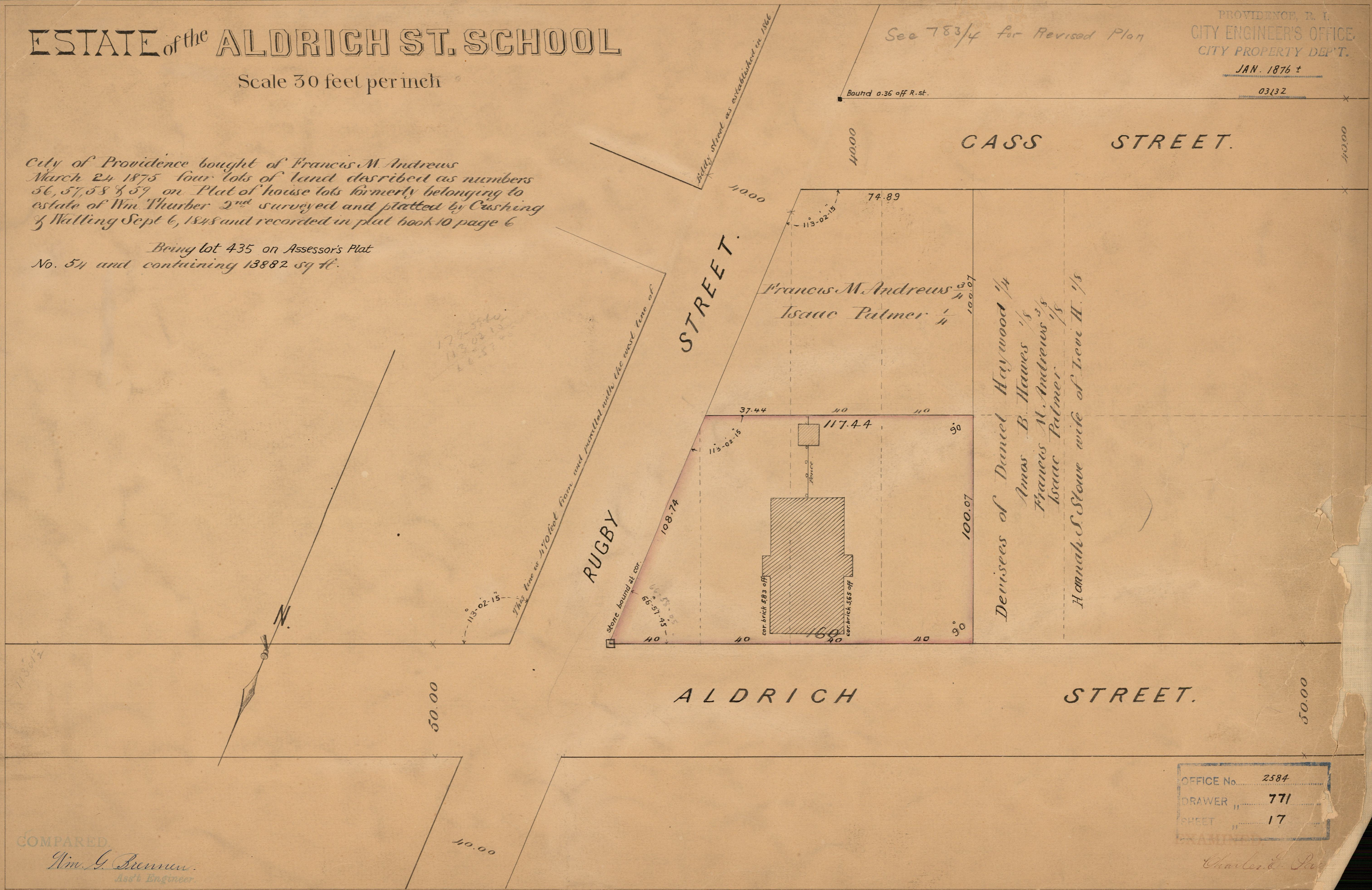
PROVIDENCE, R. I.  
CITY ENGINEER'S OFFICE  
CITY PROPERTY DEPT.

JAN. 1876 ±

03132

City of Providence bought of Francis M. Andrews  
March 24 1875 four lots of land described as numbers  
56, 57, 58 & 59 on Plat of house lots formerly belonging to  
estate of Wm. Thurber 2<sup>nd</sup> surveyed and platted by Cushing  
& Walling Sept 6, 1848 and recorded in plat book 10 page 6

Being lot 435 on Assessor's Plat  
No. 54 and containing 13882 sq ft.



OFFICE No. 2584  
DRAWER " 771  
SHEET " 17

COMPARED  
Wm. G. Brewster  
Asst Engineer

Charles E. ...