

Red offsets taken June 13, 1887. W.G.B.

PROVIDENCE, R. I.  
CITY ENGINEER'S OFFICE,  
CITY PROPERTY DEPT.

July 22-1876

03414

# ESTATE OF THE West River St. School.

Note: Use nothing on this map without consulting W.G.B. Street map established Dec. 1888

Conveyed by Wm G. R. Mowry to School District No. 3 by deed dated Dec 31, 1851 and recorded in Deed Book 16 Page 454 North Providence, (now Pawtucket) records Being lots Nos 52 & 53 on "Plat of lots in N. Prov. belonging to Samuel Whelden surveyed and platted Oct. 1846 by H. F. Walling." Assessors' Plat No. 2, Lots 478 & 479.

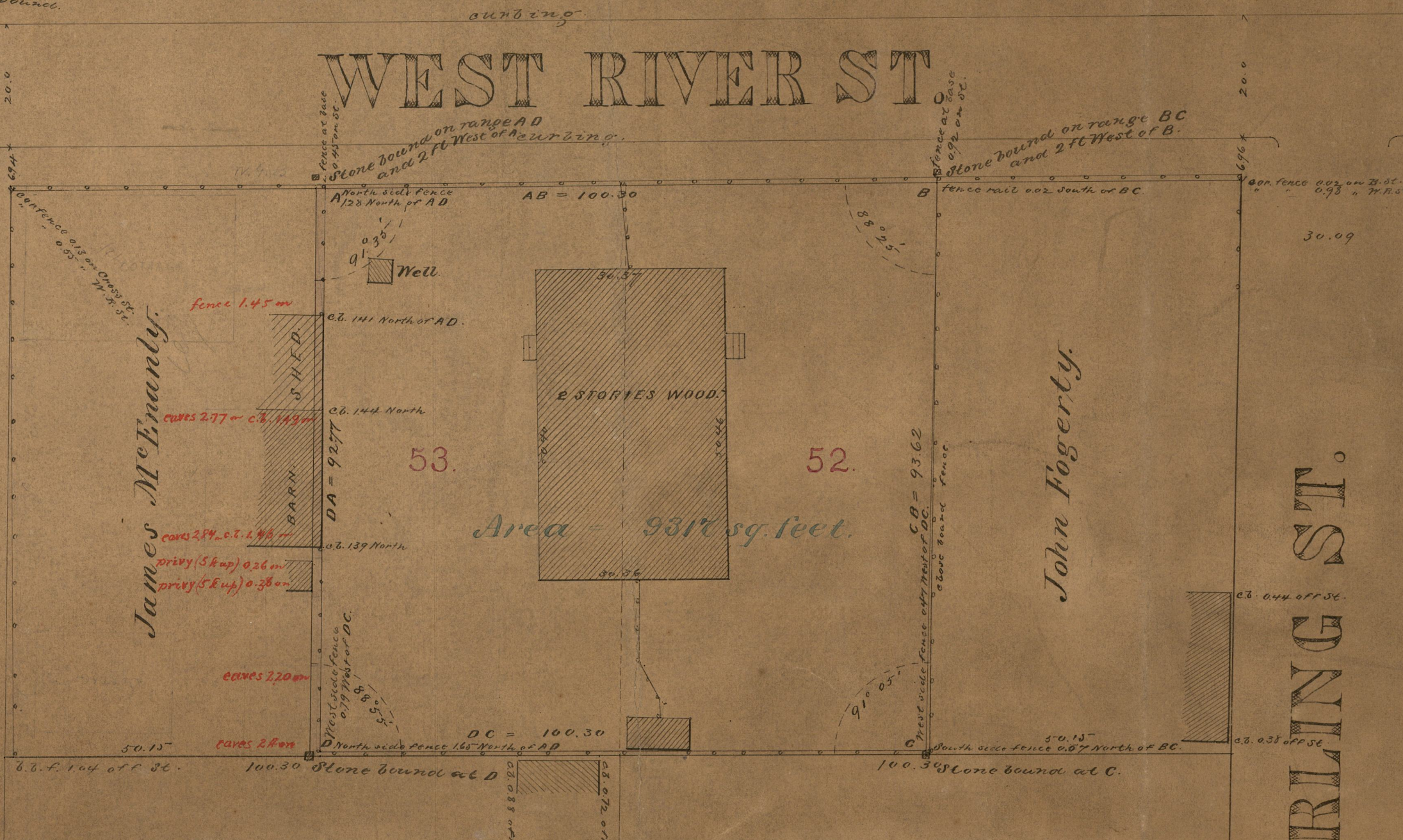
Stone bounds set  
August 4th 1876.

CROSS ST.

WEST RIVER ST

John Fogarty.

DARLING ST.



James McInerdy.

Frank Cusick

Michael Kidd.

Surveyed July 22, 1876.  
City Engineer's Office, August 5th, 1876.

Scale, 1 inch = 20 feet.

OFFICE No. 2811  
DRAWER 771  
SHEET 1

COMPARED.

Robert E. Sherman.

Charles L. Fairie