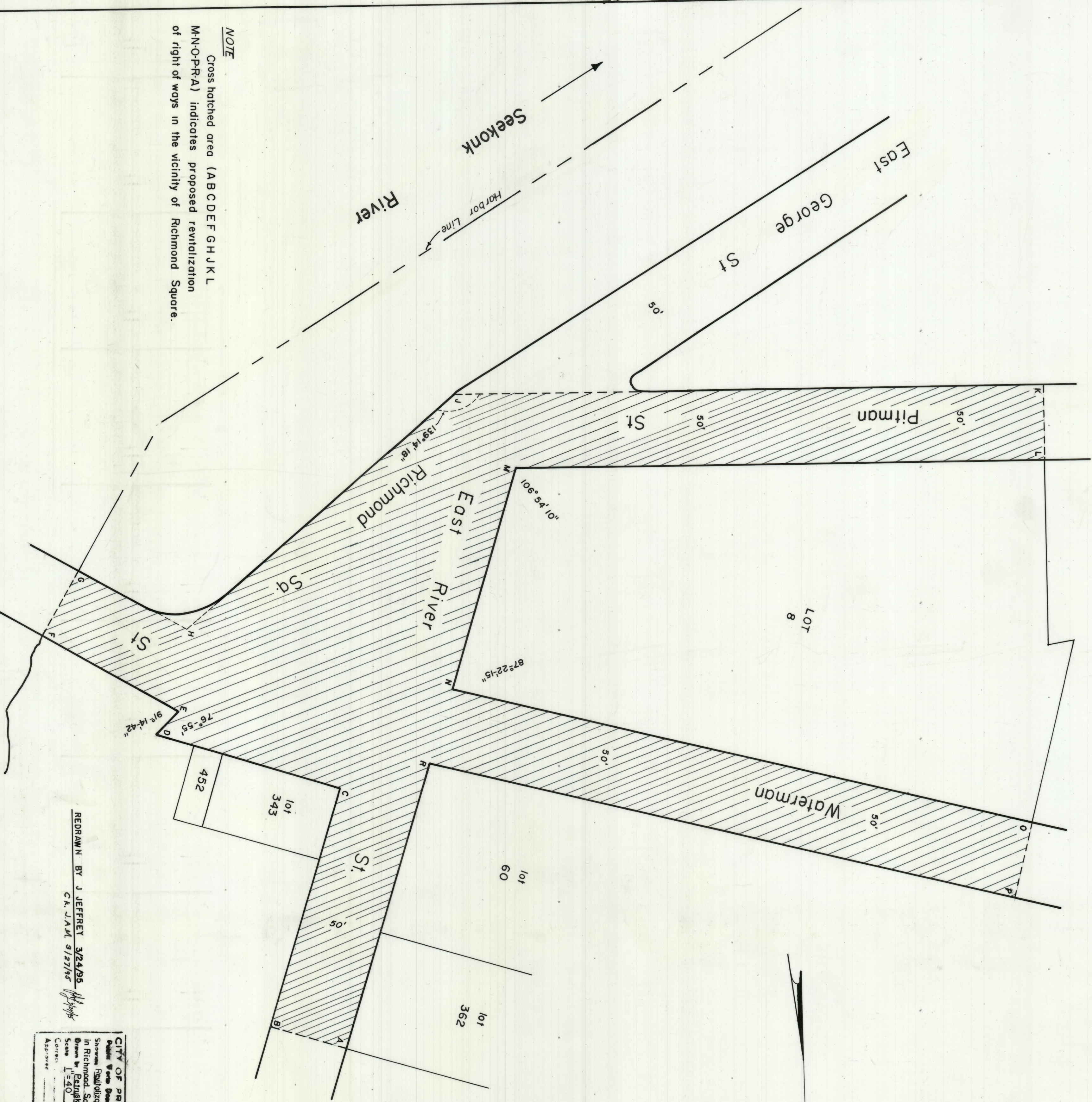
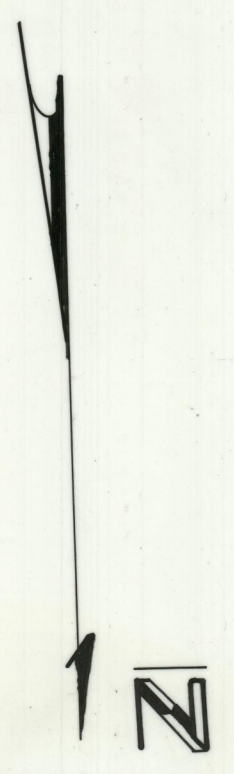


PROVIDENCE, R. I.  
 P. W. SEPTON ENGINEERING OFFICE  
 SECTION  
 Plan No. 064251  
 Date July 13, 1983



**NOTE**  
 Cross hatched area (A B C D E F G H J K L  
 M-N-O-P-R-A) indicates proposed revitalization  
 of right of ways in the vicinity of Richmond Square.

REDRAWN BY J. JEFFREY 3/24/95  
 C.K. J.A.M. 9/27/95

**CITY OF PROVIDENCE R. I.**  
 Public Works Dept. Engineering Office  
 Shows Revitalization of right of ways  
 in Richmond Sq. area. Created by J.A.M.  
 Drawn by Patricia Chen July 15, 1983.  
 Scale 1"=40'  
 AS/07044  
 CIVIL ENGINEERS