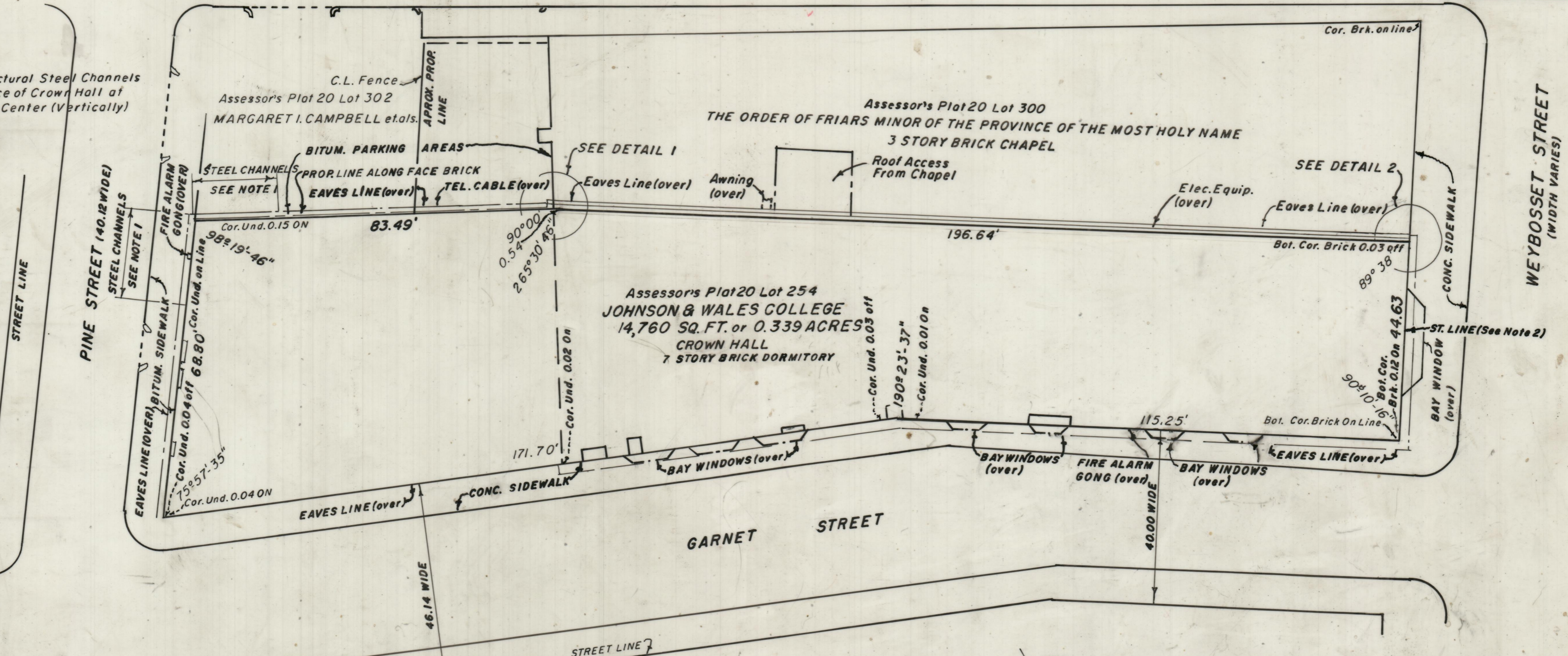


**NOTE 2**  
 STREET LINE FOR WEYBOSSET ST. WAS ESTABLISHED IN 1858 AND IS NO LONGER REPRODUCIBLE ON THE GROUND. THE ST. LINE HEREON IS BASED ON CURRENT OCCUPATION (THE FACE OF PRESENT BUILDINGS) AND IS IN SUBSTANTIAL AGREEMENT WITH LAND RECORDS.

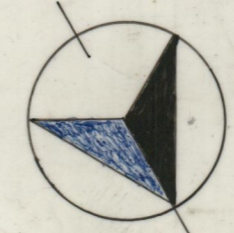
PROVIDENCE  
 P. O. DEPT. ENGINEERING OFFICE  
 CITY PROPERTY SECTION  
 No. 064239  
 Date April 26, 1983

PAGE STREET

**NOTE 1**  
 (8) 4" X 12" Structural Steel Channels Fastened to Face of Crown Hall at 10' to 12' on Center (Vertically)

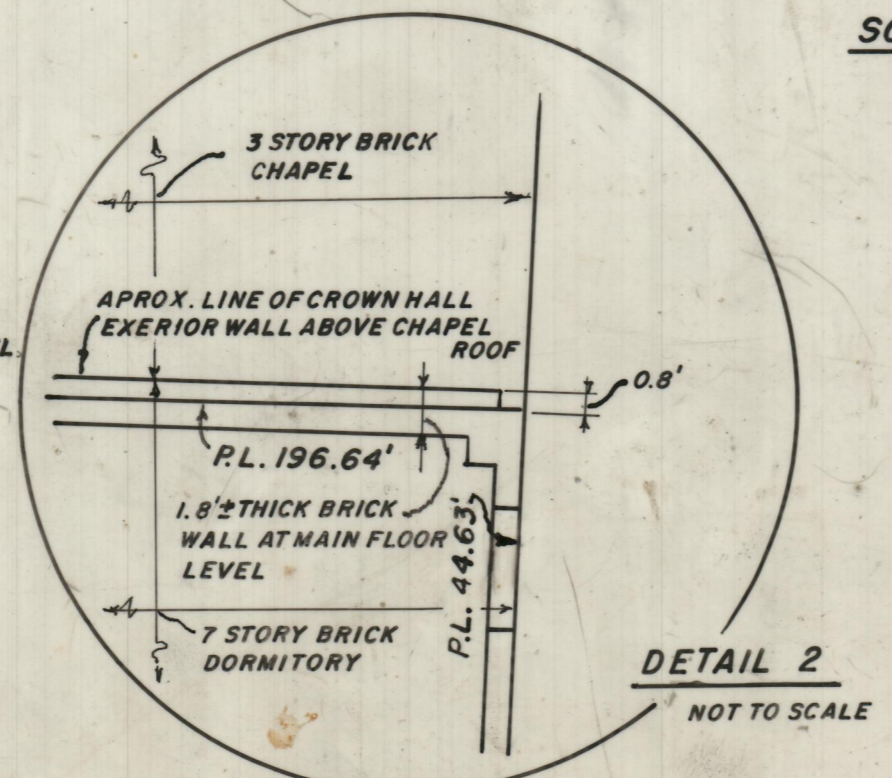
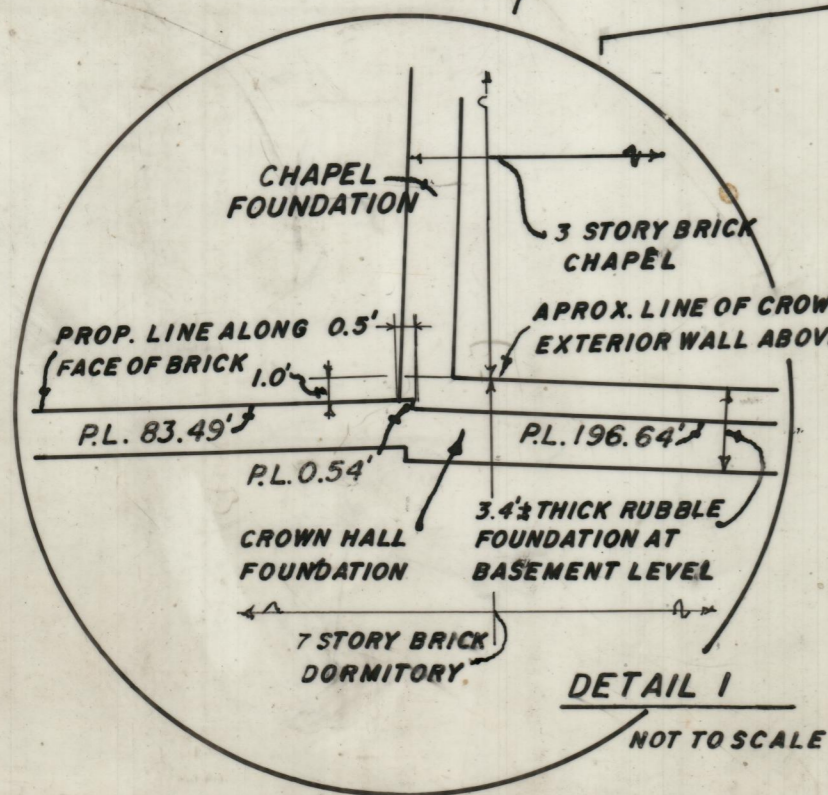


SCALE 1"=20'



PLAN OF LAND WEYBOSSET, GARNET & PINE STS.

SURVEYED BY:  
 GILBERT & MALONEY  
 ARCHITECTS, ENGINEERS & LAND SURVEYORS  
 170 RHODES STREET  
 PROVIDENCE, R.I. 02903



OFFICE NO. 27319  
 DRAWN 769  
 SHEET 85