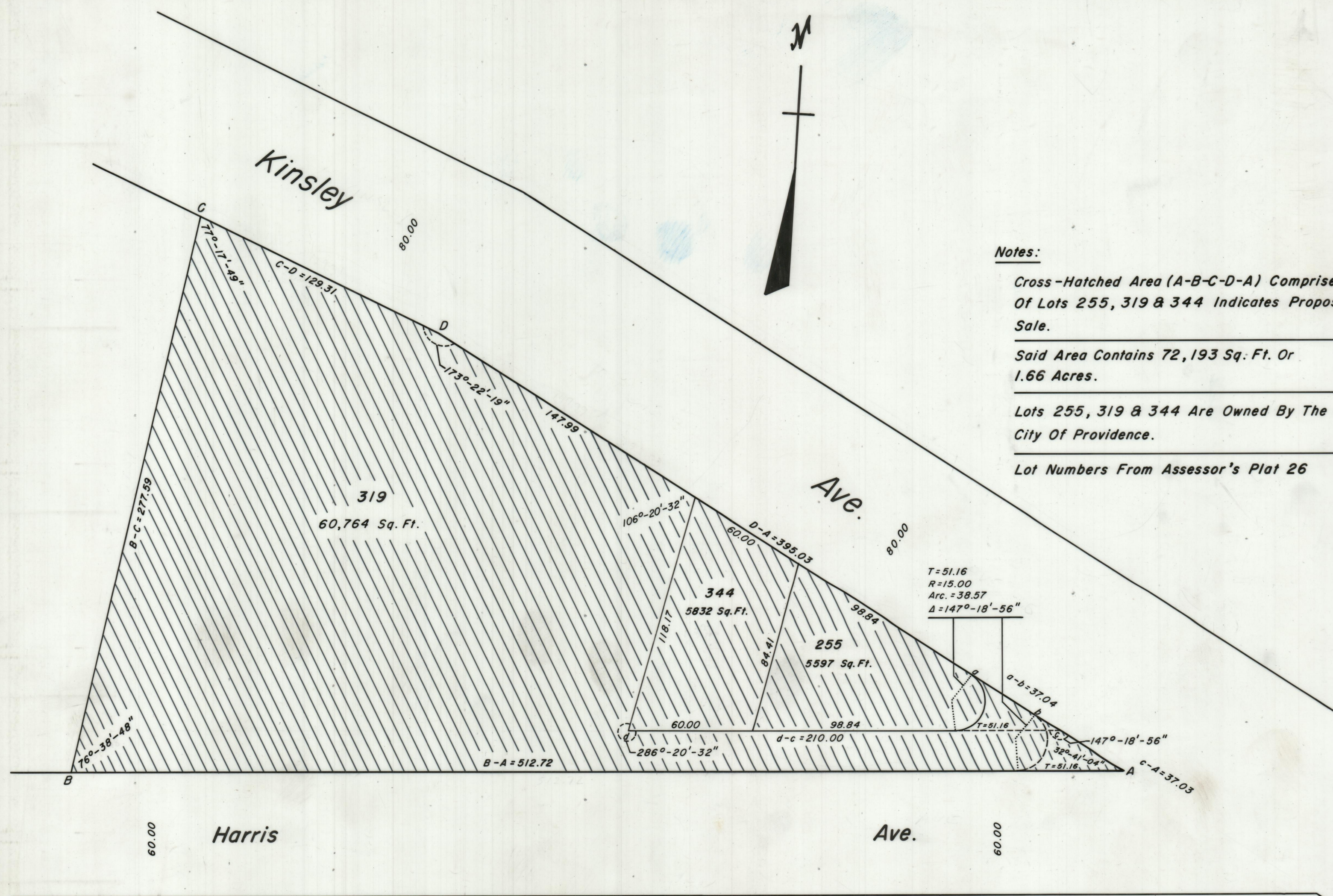


PROVIDENCE, R. I.
 P. W. DEPT. ENGINEERING OFFICE
 CITY PROPERTY SECTION
 Plan No. 064298
 Date June 1, 1984



Notes:
 Cross-hatched Area (A-B-C-D-A) Comprised
 Of Lots 255, 319 & 344 Indicates Proposed
 Sale.
 Said Area Contains 72,193 Sq. Ft. Or
 1.66 Acres.
 Lots 255, 319 & 344 Are Owned By The
 City Of Providence.
 Lot Numbers From Assessor's Plat 26

CITY OF PROVIDENCE, R. I.
 Public Works Dept. Engineering Office
 Show Proposed Sale (Lots 255,
 319 & 344 on A.P. 26).
 Drawn by Petruska Checked by J.A.M.
 Scale 1" = 40' Date June 1, 1984
 Corrected by [Signature] Associate Eng.
 Approved by [Signature] THE ENGINEER