

PROVIDENCE, R.I.
CITY ENGINEER'S OFFICE
CITY PROPERTY DEPT.
Nov. 27 1925
048231

PUBLIC HIGHWAY
POST OFFICE COURT
Laid out by the Proprietors on Plat Card #116 1717 or 1718

United States of America
Post office and Custom House
Three story granite building

Note;- The shaded area is the site bought 1854±
part of which is used for highway purposes, the
distances 144.6 and 70.51 taken from land record plat card #77

W E Y B O S S E T
has been built and kept in repair
by the City from curb to curb (Asphalt paving)

S T R E E T

P U B L I C
H I G H W A Y

Street line as fixed by
City Council st. Bx 2, P.
455

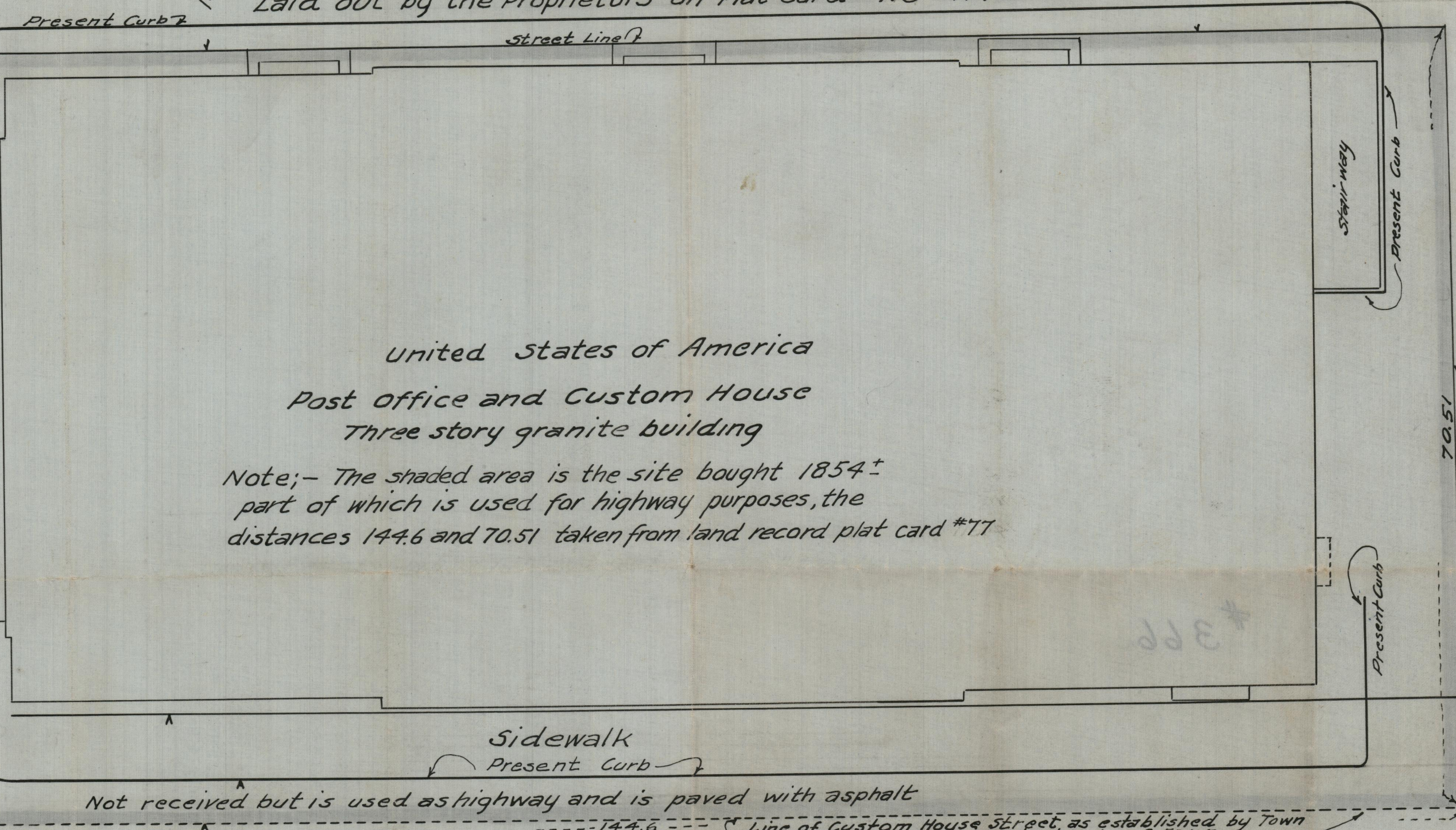
Line of Weybosset St. as established by the
Town Council Jan. 2, 1762. See Deed Book 17 P. 527

Not received but is used as highway
and is paved with asphalt

Granolithic Sidewalk

Present Curb

Street line as fixed by
City Council
Feb. 23, 1870 see street book 2, p. 455



Not received but is used as highway and is paved with asphalt

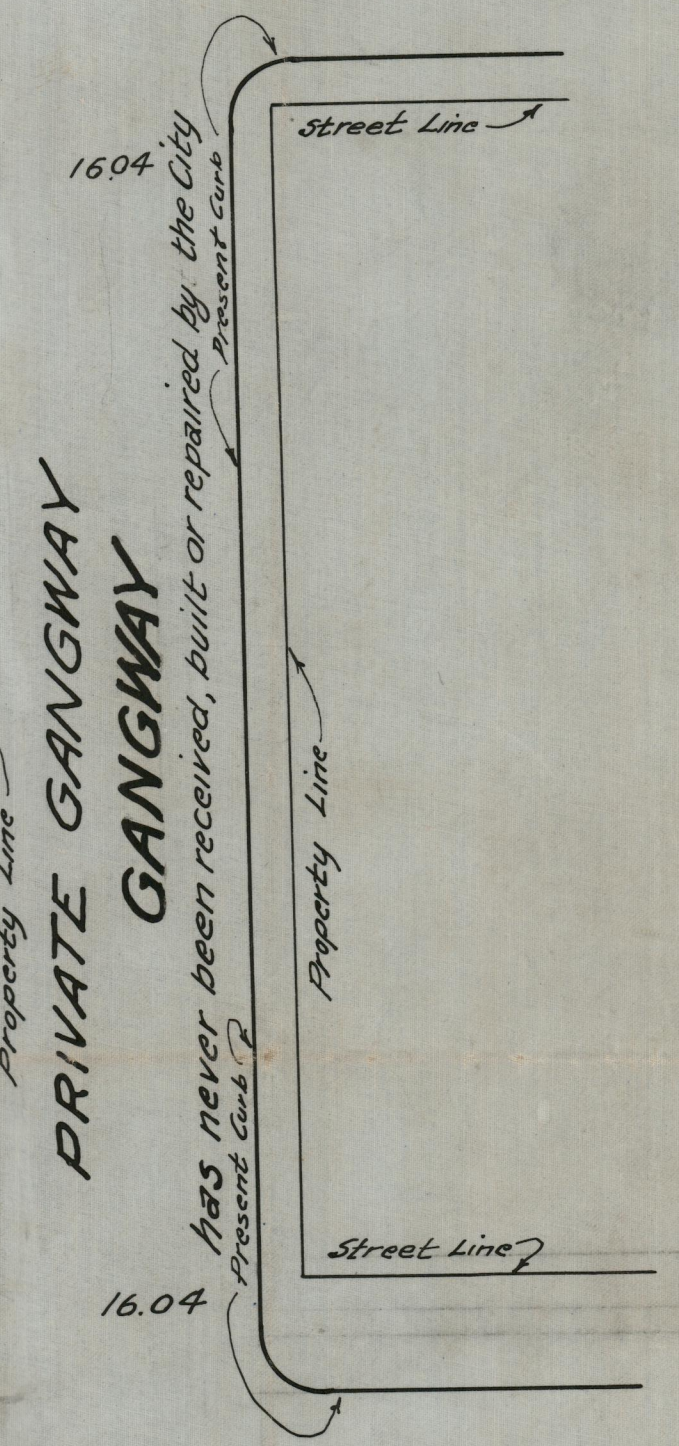
34.10
24.10±
22.00±

C U S T O M **H O U S E** **S T R E E T**

has been built and kept in repair by the City
from Curb to Curb 22± Wide (Asphalt Paving)

P U B L I C
H I G H W A Y

Line of Custom House Street as established by Town
Council Jan. 2, 1762. See deed book 17 P. 526-7



1604

16.04

P R I V A T E
G A N G W A Y

has never been received, built or repaired by the City

CITY OF PROVIDENCE
ENGINEERING DEPARTMENT
Showing Old Post Office and
Adjoining Streets
Drawn by Pickering Checked by Blanding
Scale 1" = 10' Date Nov. 27 1925
Corrected by Edward L. Blanding Asst. Eng.
Approved Horace G. Abney City Eng.