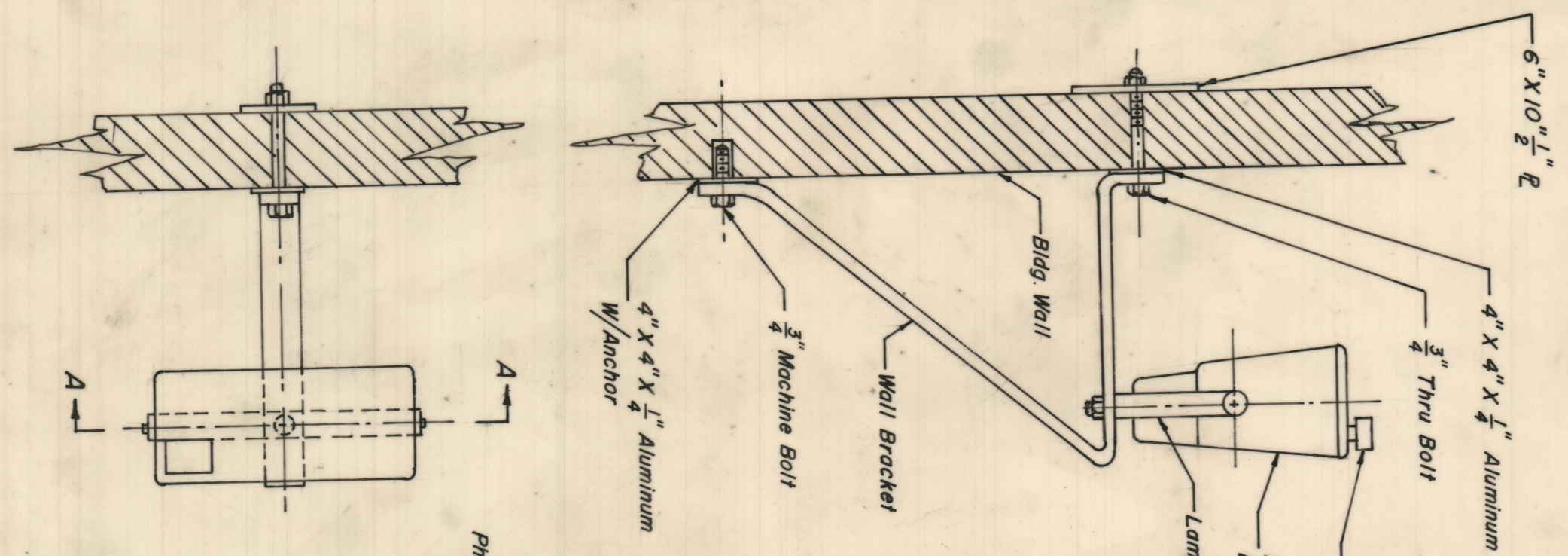
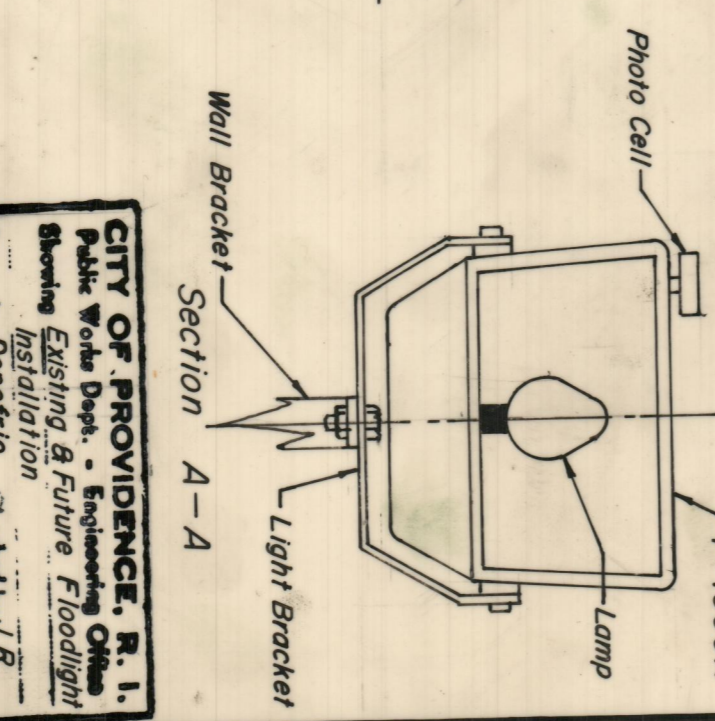


769-70

PROVIDENCE, R. I.
 P. V. DEPT. - ENGINEERING OFFICE
 CITY PROPERTY SECTION
 Plan No. 063824
 Date February 4, 1974



Note
 Installation Of 3 P-1000A Mercury Vapor Lamps Including Brackets, Thru Bolts And Anchors. Thru Bolts Shall Be 3/4" Machined Bolts, With Washer Plates And Nuts. Inside Washer Plate To Be 6" X 10" X 1/2" Steel Plate. Outside Washer Plate To Be 4" X 4" X 1/4" Aluminum Plate. Bracket To Be Adjustable Socket, Galvanized - Steel Trunnion Mounting Bracket With Vertical Degree-Marking Scale And Repositioning Stop. G.E. Designation In Cat. No. C5226.
 Wall Anchor To Be 3/4" Machine Bolt With Anchor. Light Fixture To Be G.E. Designation P-1000A Mercury Vapor Lamps. All Material To Be Supplied By The City.



CITY OF PROVIDENCE, R. I.
 Public Works Dept. - Engineering Office
 Showing Existing & Future Floodlight Installation
 Drawn by Donofrio Checked by J.R.
 Scale No Scale Date Feb. 4, 1974
 Corrected by [Signature] Associate Engr.
 Approved by [Signature] Chief Engineer
 769-70