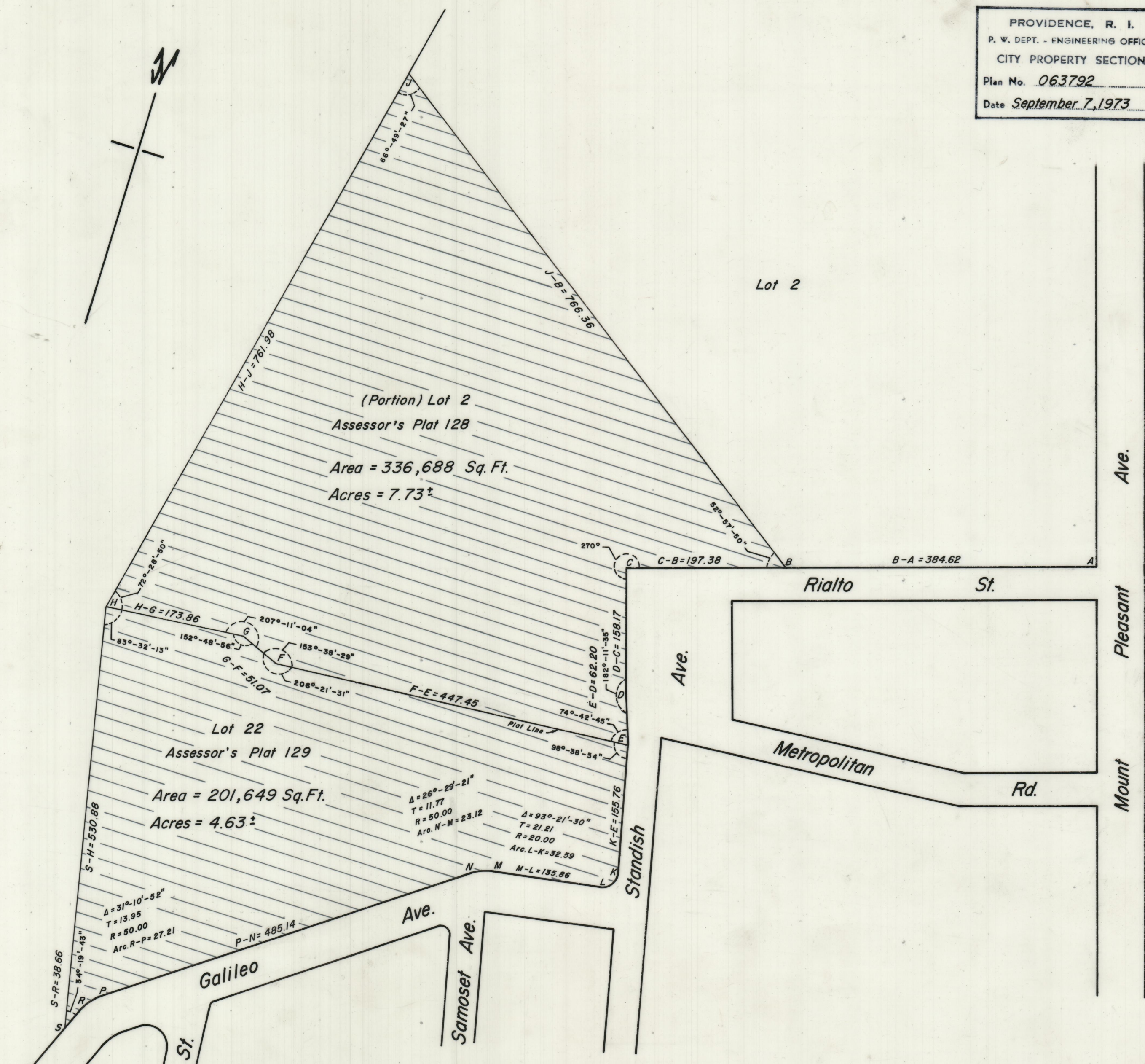


PROVIDENCE, R. I.
 P. W. DEPT. - ENGINEERING OFFICE
 CITY PROPERTY SECTION
 Plan No. 063792
 Date September 7, 1973



Notes:

Cross-Hatched Area (B-C-D-E-K-L-M-N-P-R-S-H-J-B) Indicates Land To Be Conveyed To Recreation Dept. From School Dept. (Area Contains 538,337 Sq.Ft. Or 12.36 Acres)

Cross-Hatched Area (E-K-L-M-N-P-R-S-H-G-F-E) Contains 201,649 Sq.Ft. Or 4.63 Acres.

Cross-Hatched Area (B-C-D-E-F-G-H-J-B) Contains 336,688 Sq. Ft. Or 7.73 Acres.

CITY OF PROVIDENCE, R. I.
 Public Works Dept. - Engineering Office
 Showing Land To Be Conveyed To Recreation Dept. From School Dept.
 Drawn by Petruska Checked by R. J. G.
 Scale 1" = 100' Date Sept. 7, 1973
 Corrected by Joseph J. Campa Associate Engr.
 Approved Joseph J. Campa CHIEF ENGINEER