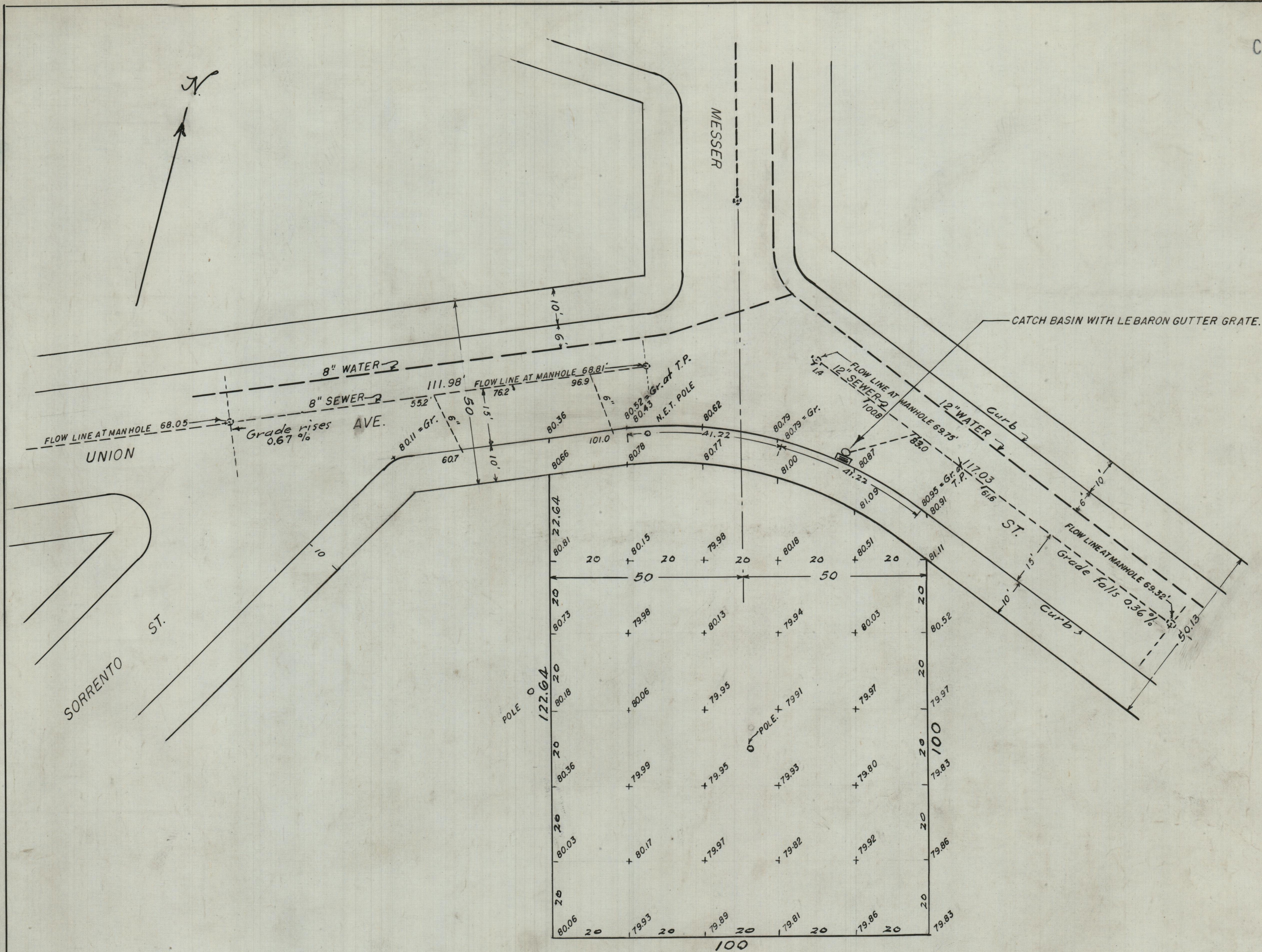


SEPT. 15, 1948

059954



BASE = MEAN HIGH WATER

Sewer Branches - 6" dia.

CITY OF PROVIDENCE
ENGINEERING DEPARTMENT
Showing MESSER ST. FIRE STATION SITE.
TOPOGRAPHY & UTILITIES.
Drawn By E.A.K. Checked by W.L.B.
Scale 1" = 20' Date SEPT. 15, 1948
Corrected by William L. Bagley Asst. Eng.
Approved John E. Meade City Eng.