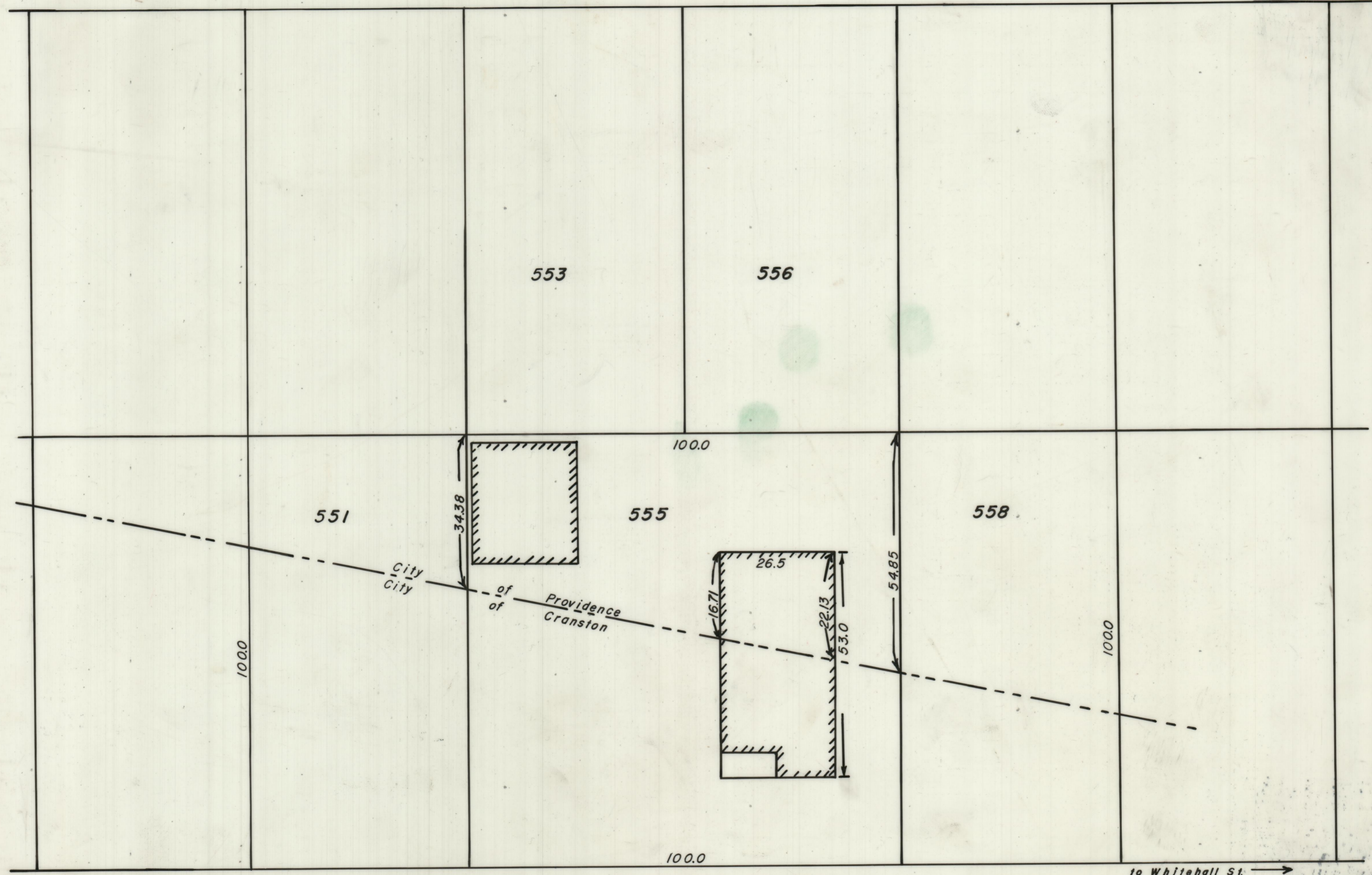
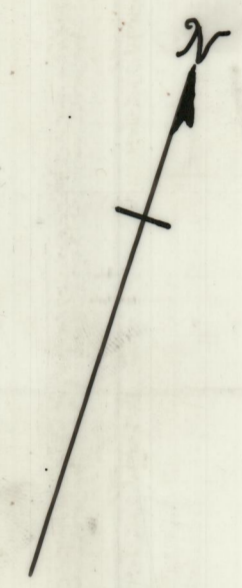


PROVIDENCE, R. I.
 P. W. DEPT. ENGINEERING OFFICE
 STREET LINE SECTION
 Plan No. 063443
 Date March 22, 1971

UNION AVE.



NOTE-Lot numbers from Assessor's Plot 104

HILLWOOD AVE.

CITY OF PROVIDENCE, R. I.
 Public Works Dept. Engineering Office
 Showing Location of Buildings and City line between Union & Hillwood Aves.
 Drawn by R. Gentile Checked by J. C. R.
 Scale 1" = 20' Date 3/22/71
 Corrected by R. S. ... Associate Engr.
 Approved: [Signature] CHIEF ENGINEER