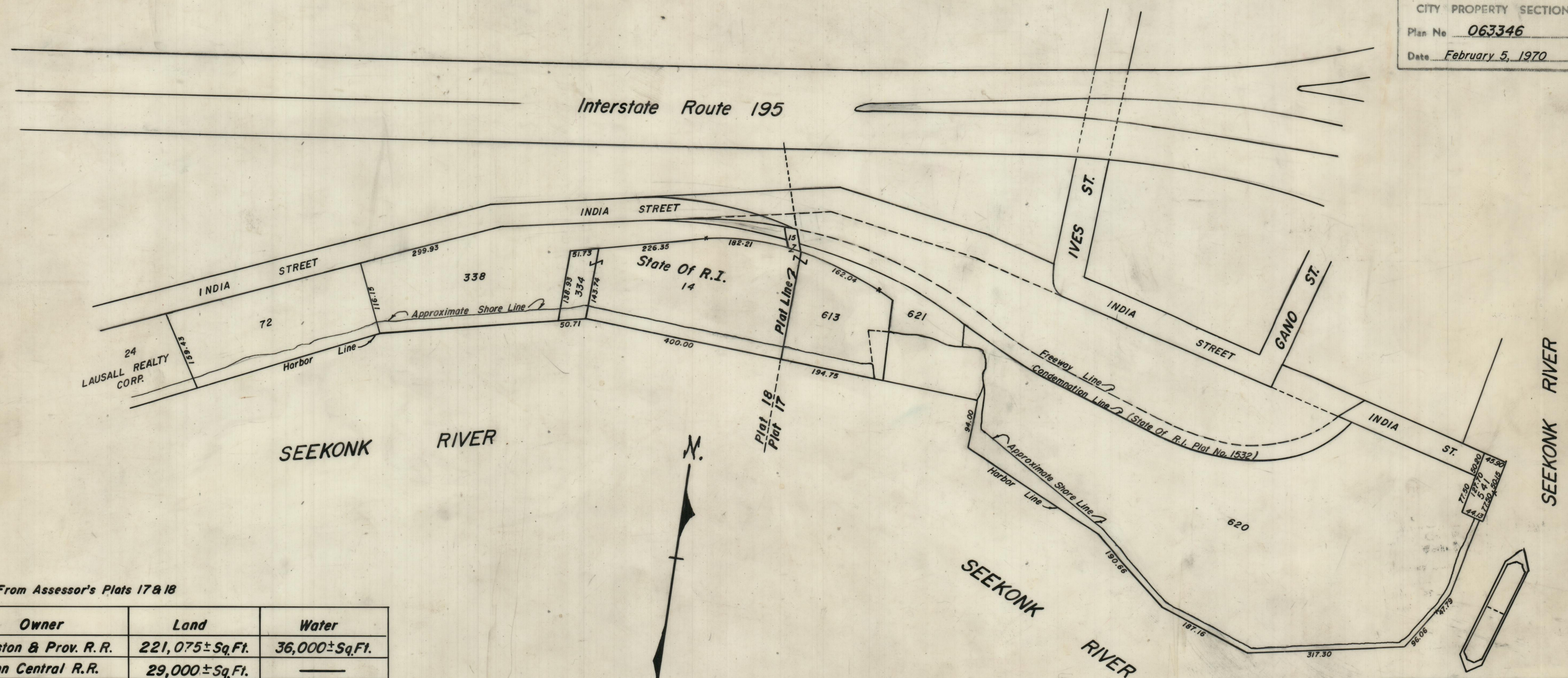


PROVIDENCE, R. I.  
 P. W. DEPT. - ENGINEERING OFFICE  
 CITY PROPERTY SECTION  
 Plan No. **063346**  
 Date **February 5, 1970**



Note: Lot Numbers From Assessor's Plats 17 & 18

Plat	Lot	Owner	Land	Water
17	620	Boston & Prov. R.R.	221,075 ± Sq.Ft.	36,000 ± Sq.Ft.
17	621	Penn Central R.R.	29,000 ± Sq.Ft.	—
17	541	Penn Central R.R.	5,674 ± Sq.Ft.	—
18	338	Penn Central R.R.	82,151 ± Sq.Ft.	8,400 ± Sq.Ft.
18	72	Penn Central R.R.	38,723 ± Sq.Ft.	15,600 ± Sq.Ft.
TOTAL			376,623 ± Sq.Ft.	60,000 ± Sq.Ft.

CITY OF PROVIDENCE, R. I.  
 Public Works Dept. - Engineering Office  
 Showing Proposed Park Site at  
 India Point  
 Drawn by Scungio Checked by R. J. Q.  
 Scale 1" = 160' Date Feb. 5, 1970  
 Corrected by R. J. Q. Associate Engr.  
 Approved *R. J. Q.* CHIEF ENGINEER