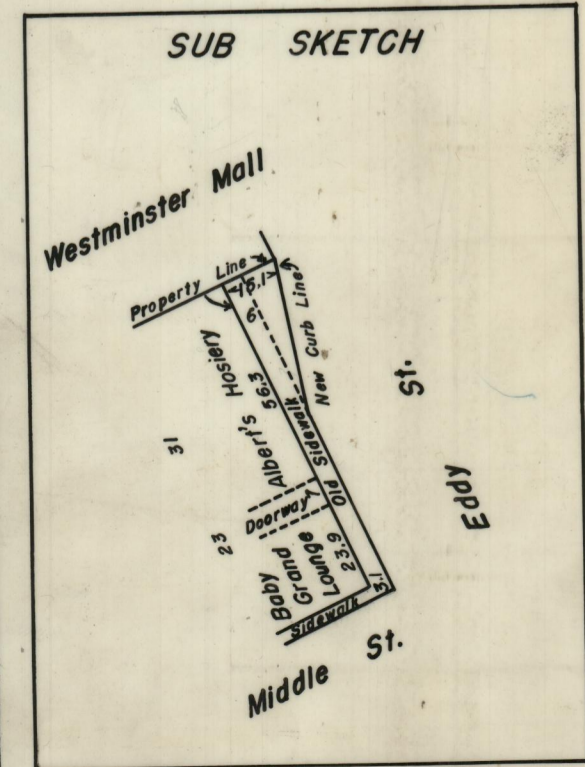
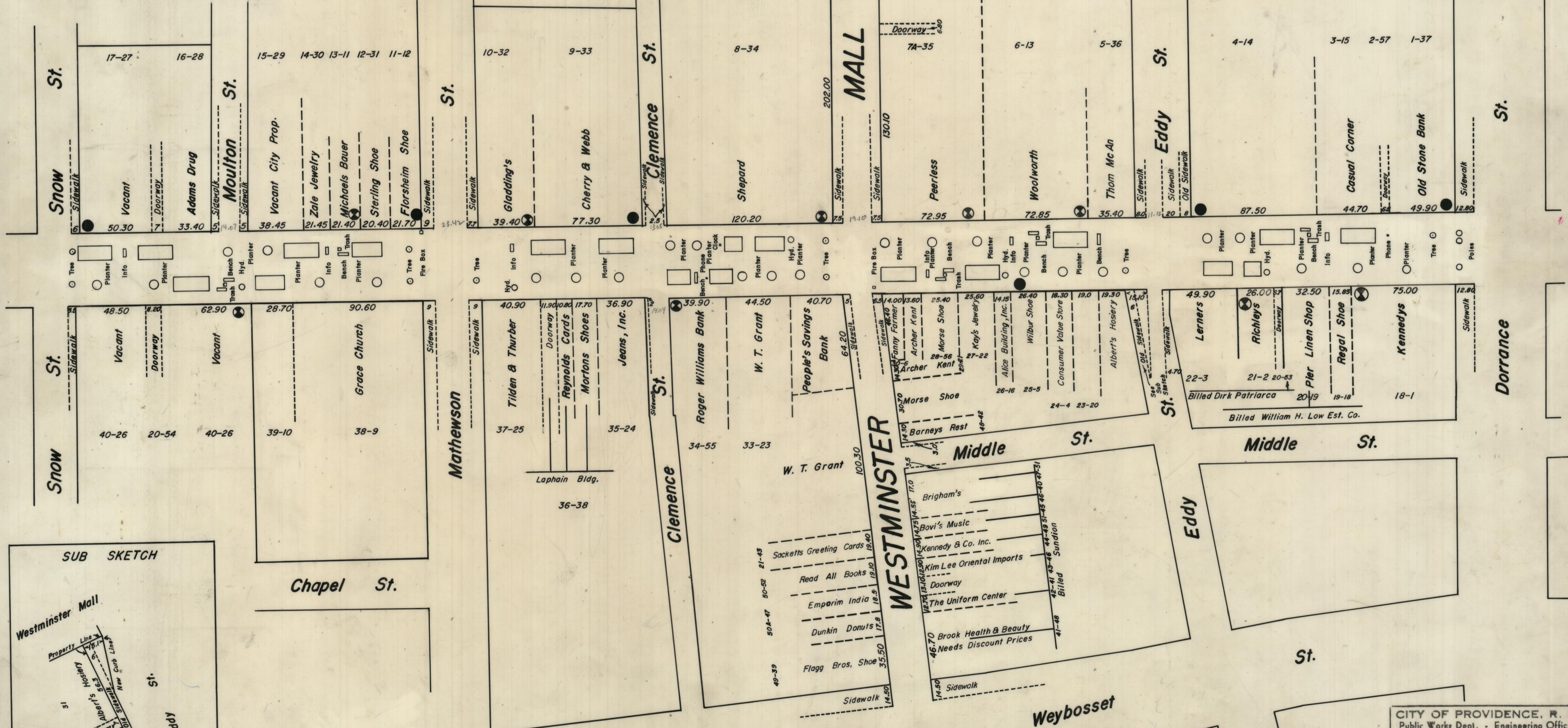
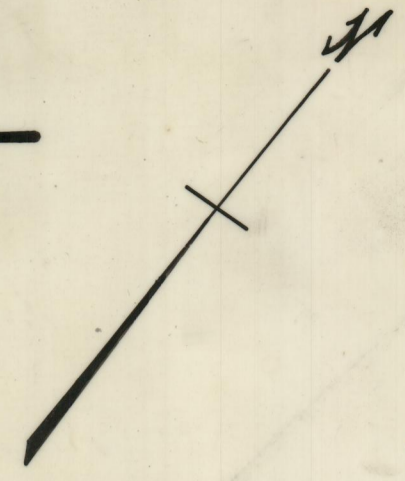


Mounting Bracket #35-110728-06

Section A-A

PROVIDENCE, R. I.
 P. W. DEPT. - ENGINEERING OFFICE
 CITY PROPERTY SECTION
 Plan No. **063253**
 Date **February 13, 1969**

Westminster Mall



Note; Revised Feb. 5, 1975

Numbers (14-30)
 Refer to Billing & Listing Numbers
 as Compiled by P.W. Business Office
 ⊗ Location Of Floodlights
 ● Location Of Additional Proposed Floodlighting

All Electricity To Circular Planters Are Disconnected
 At Planters, Except For Two, North Of Clemence St.
 They're Disconnected At Man Hole.

CITY OF PROVIDENCE, R. I.
 Public Works Dept. - Engineering Office
 Showing Occupants for Billing for
 Snow Removal at Westminster Mall
 Drawn by *Patruska* Checked by
 Scale 1" = 50' Date Feb. 13, 1969
 Corrected *Patruska* Associate Engineer
 Approved *R. S. Strong* CHIEF ENGINEER

Revised 3-23-1973