

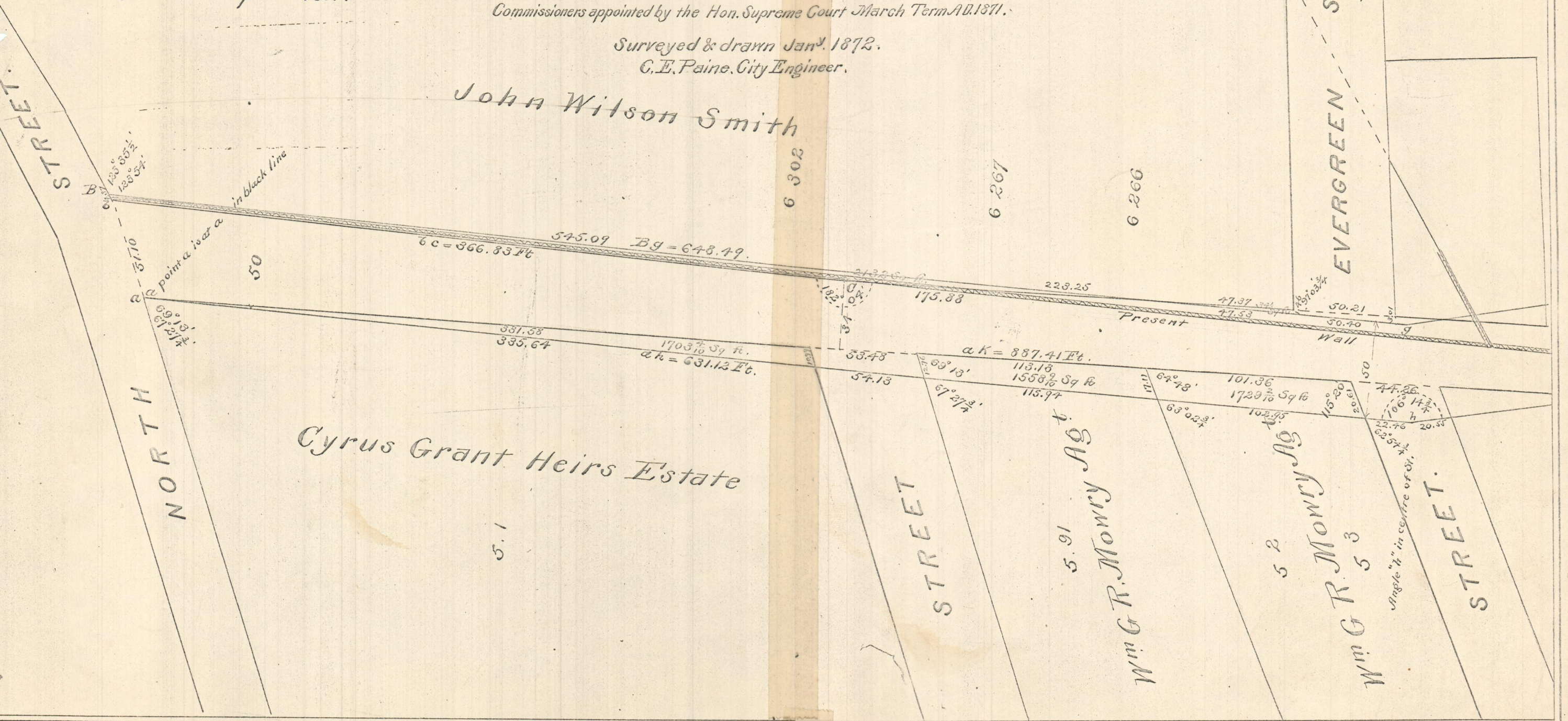
James C. Hidden
Christopher T. Keith
Henry A. Webb
Geo W. Hall
Charles D. Gady
Scale 50 ft per inch.

MAP OF THE PROPOSED WIDENING OF CAMP ST

FROM OLNEY TO NORTH ST
MADE BY ORDER OF
James C. Hidden Christopher T. Keith Henry A. Webb.
George W. Hall and Charles D. Gady
Commissioners appointed by the Hon. Supreme Court March Term AD. 1871.

Surveyed & drawn Jan^y. 1872.
C. E. Paine, City Engineer.

John Wilson Smith



Cyrus Grant Heirs Estate

Wm G R. Mowry Agt.

Wm G R. Mowry Agt.

compared
769
47