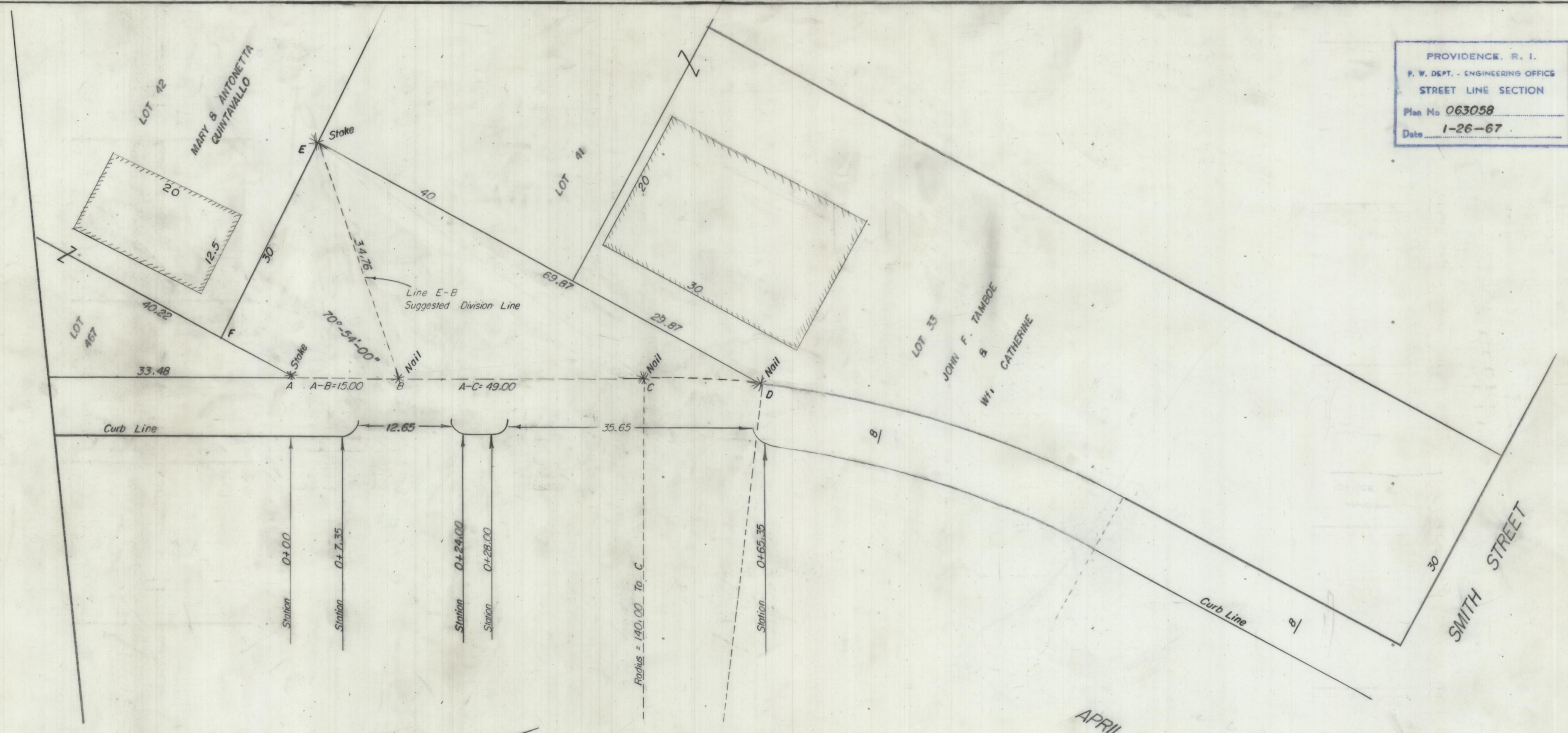


PROVIDENCE, R. I.  
 P. W. DEPT. - ENGINEERING OFFICE  
 STREET LINE SECTION  
 Plan No 063058  
 Date 1-26-67



Notes

- Scale 1" = 10'
- 2.0 Ft. Corners On Driveways
- Area A-B-C-D-E-F-A Proposed To Be Abandoned

CITY OF PROVIDENCE, R. I.  
 Public Works Dept. - Engineering Office  
 Showing Suggested Division Line After Proposed Abandonment  
 Drawn by Scungio Checked by Toppi  
 Scale 1" = 10' Date 1-26-67  
 Corrected by [Signature] Associate Engr.  
 Approved Robert B. Strong CHIEF ENGINEER