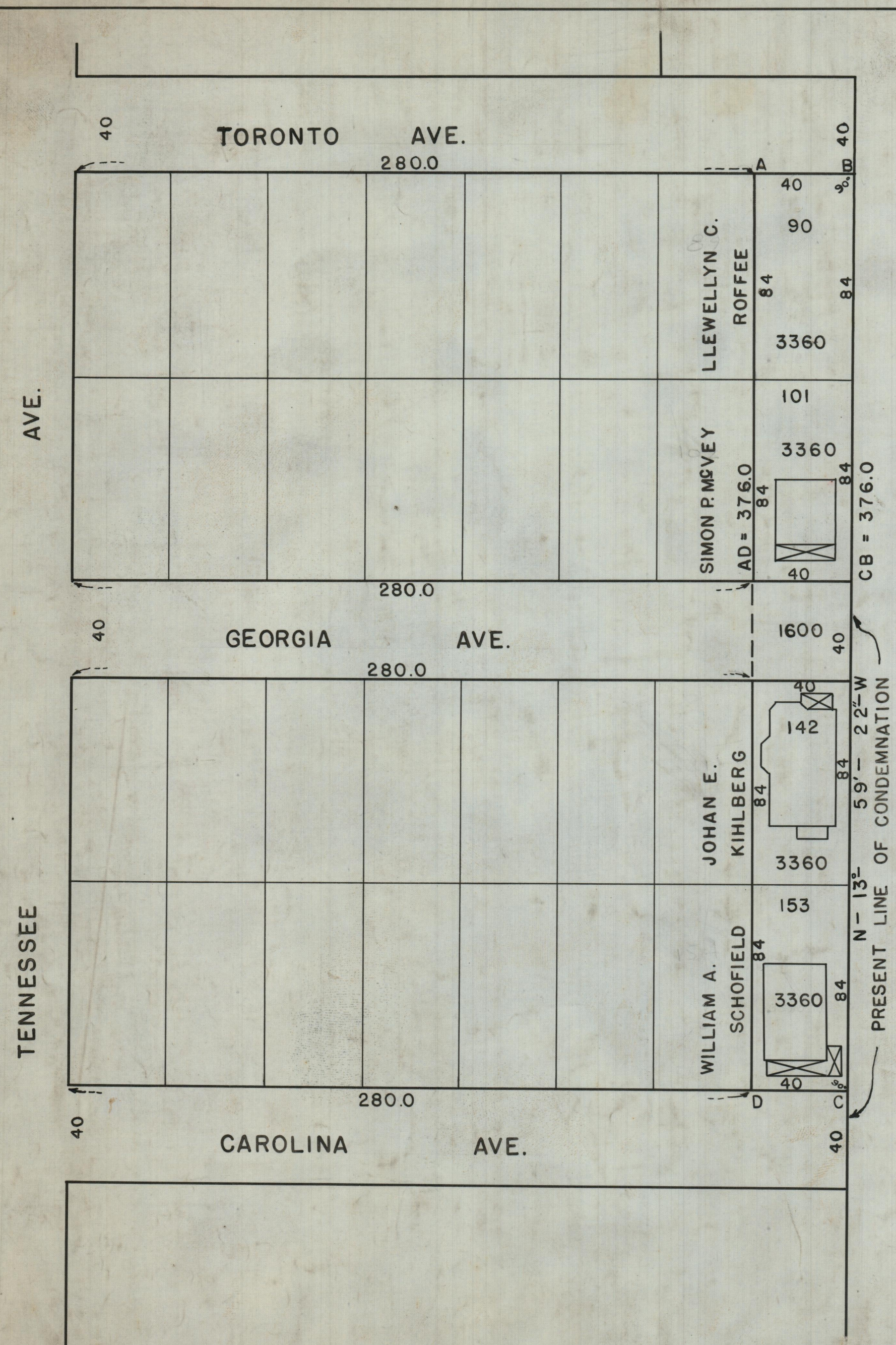


SUGGESTED PLAN FOR RELIEVING CONGESTED CONDITIONS OF DEAD END STREETS



| PLAT | LOT | OWNERS — WITHOUT ADMITTING TITLE |
|------|-----|----------------------------------|
| 101 | 90 | LLEWELYN C. ROFFEE |
| 101 | 101 | JOHN HASSELL |
| 101 | 142 | JOHAN E. KIHMBERG |
| 101 | 153 | ELLEN S. MURPHY |
| | | PLATTED STREET (GEORGIA AVE.) |

CITY OF PROVIDENCE
 ENGINEERING DEPARTMENT
 Showing PROPOSED HIGHWAY
 Drawn by BAILEY Checked by BEANE
 Scale 1" = 40' Date 8-12-42
 Corrected by *Frank Beane* Asst. Eng.
 Approved by *Frank Beane* City Eng.