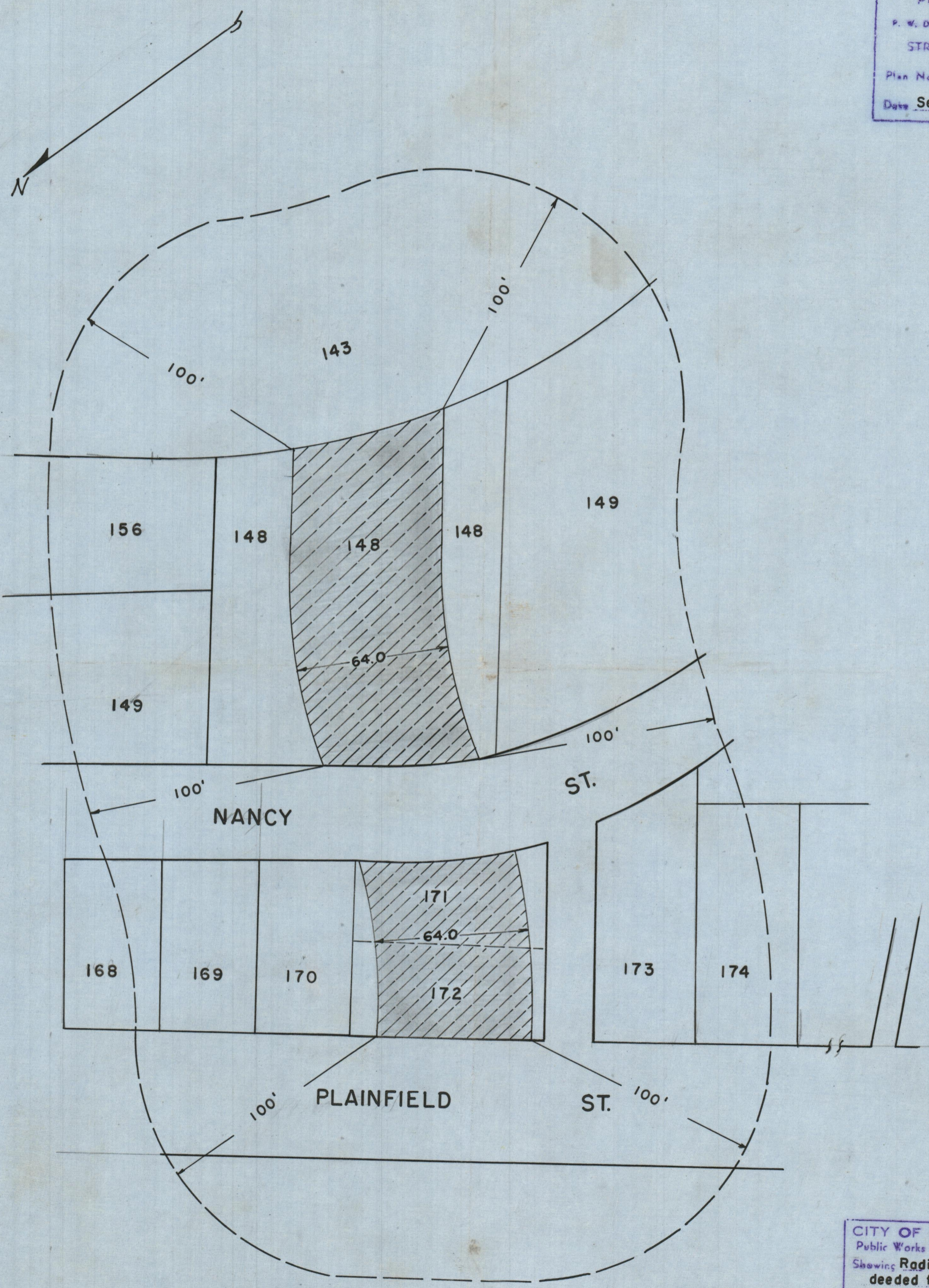


Plan # 595 approved 10-13-65

PROVIDENCE, R. I.  
P. W. DEPT. - ENGINEERING OFFICE  
STREET LINE SECTION  
Plan No. 062807  
Date September 9, 1965



Shaded areas to be deeded for highway purposes  
Lot numbers from Assessor's Plat 110

CITY OF PROVIDENCE, R. I.  
Public Works Dept. - Engineering Office  
Showing Radius Plan for land to be  
deeded for highway purposes  
Drawn by G. F. J. Checked by L. P. R.  
Scale 1" = 40' Date Sept. 9, 1965  
Corrected by [Signature] Associate Eng.  
Approved Robert D. Strong  
CHIEF ENGINEER