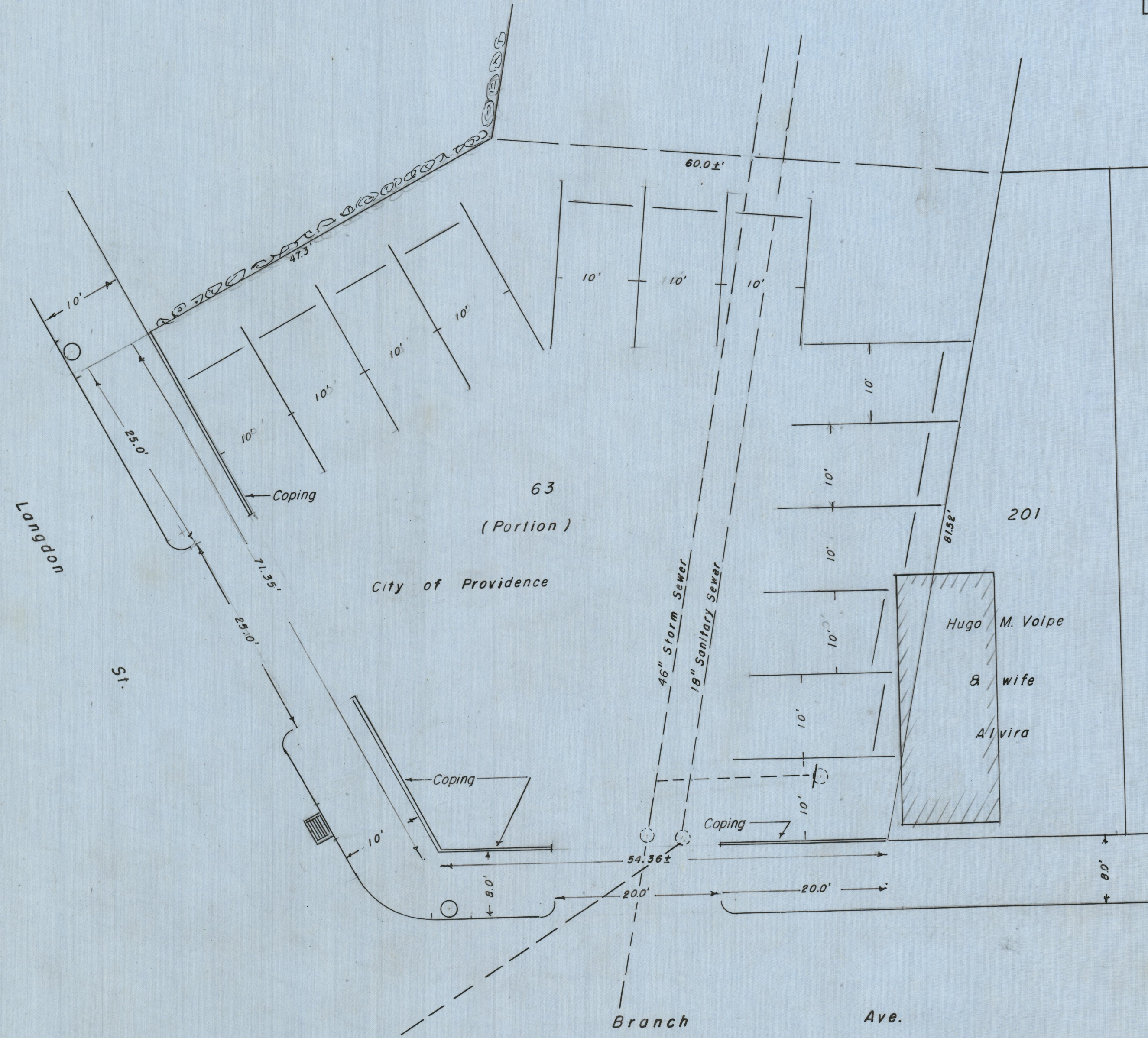


PROVIDENCE, R. I.  
 P. W. DEPT. - ENGINEERING OFFICE  
 CITY PROPERTY SECTION  
 Plan No. 062542  
 Date July 5, 1963



Assessor's Plat 98

CITY OF PROVIDENCE, R. I.  
 Public Works Dept. - Engineering Office  
 Showing Proposed Parking Plan  
 Drawn by E.A.K. Checked by L.P.R.  
 Scale 1" = 10' Date July 5, 1963  
 Corrected by Robert B. Thors Associate Eng.  
 Approved Robert B. Thors CHIEF ENGINEER